

**SDT-MH 24**  
**Trailer Tender**  
**SERIAL #** \_\_\_\_\_  
**WORK ORDER #** \_\_\_\_\_

**This page is left blank intentionally.**

## **Table of Contents**

**Chandler Equipment Co. Personnel.....Page 1**

**Warranty Information.....Page 2, 3, 4**

### **Section - Safety & Precautions**

|                              |      |     |
|------------------------------|------|-----|
| Warning Label                | Page | S-1 |
| Caution                      | Page | S-2 |
| Safety Precautions           | Page | S-3 |
| NHTSA Notification Statement | Page | S-4 |

### **Section 1 - Basic Information & Installation**

|  |      |           |
|--|------|-----------|
| Dimensions - Side View                       | Page | 1-1       |
| Dimensions - Rear View                       | Page | 1-2       |
| Deutz D2011L03I Diesel Engine Specifications | Page | 1-3 , 1-4 |

### **Section 2 - Hydraulic Drive System**

|  |      |     |
|--|------|-----|
| Hydraulic System – SDT-MH - 24 Ton Tender        | Page | 2-1 |
| Hydraulic System Parts List                      | Page | 2-2 |
| Hydraulic Filter Assembly                        | Page | 2-3 |
| Hydraulic Valve (Prince - RD5100 Series)         | Page | 2-4 |
| Hydraulic Valve (Prince - RD5200 Series)         | Page | 2-5 |
| Hydraulic Valve - Relief Pressure Adjustment     | Page | 2-6 |
| Hydraulic Valve - Spring Center Spool Attachment | Page | 2-7 |

|   |      |      |
|---|------|------|
| Hydraulic Cylinder - Seal Replacement/ Parts List | Page | 2-8  |
| P197 1" x 1" - Tandem Pump                        | Page | 2-9  |
| Splitter Valve                                    | Page | 2-10 |
| Auger Motor MB-22 Breakdown                       | Page | 2-11 |
| Auger Motor MB-12 Breakdown                       | Page | 2-12 |
| Tender Pressure Settings                          | Page | 2-13 |

### **Section 3 - Auger Assembly**

|                           |      |     |
|---------------------------|------|-----|
| Lower Auger Assembly      | Page | 3-1 |
| Discharge Auger Assembly  | Page | 3-2 |
| Augur Assembly Breakdown  | Page | 3-3 |
| Augur Assembly Parts List | Page | 3-4 |

### **Section 4 - Operation & Maintenance**

|                        |      |     |
|------------------------|------|-----|
| Basic Operation of RDT | Page | 4-1 |
| Maintenance            | Page | 4-2 |

### **Section 5 – Behnke Trailer Maintenance**

|                           |      |     |
|---------------------------|------|-----|
| Maintenance Schedule      | Page | 5-1 |
| Light Wiring Pin Out      | Page | 5-2 |
| Trailer Component Manuals | Page | 5-2 |

## **Chandler Equipment Company Personnel**

|                         |  |
|-------------------------|--|
| <b>Bill Chandler</b>    | <b>Chief Executive Officer<br/>Advertising &amp; Marketing<br/>Dealer / Distributor Arrangements</b> |
| <b>Brannon Chandler</b> | <b>General Manager<br/>Production &amp; Scheduling<br/>Warranty, Sales and Service</b>               |
| <b>Andrea Thompson</b>  | <b>Administrative Assistant</b>  |
| <b>Lisa Johnson</b>     | <b>Accounts Receivable<br/>Collections</b>   |
| <b>Michael Sosebee</b>  | <b>Sales Manager</b>   |
| <b>Gene Dye</b>         | <b>Outside Sales<br/>Mid-South Regional Sales Manager</b>  |
| <b>Dan McCorvey</b>     | <b>Outside Sales<br/>Southeast Regional Sales Manager</b>  |
| <b>Richard Wray</b>     | <b>Outside Sales<br/>Western Regional Sales Manager</b>  |
| <b>Matt Farmer</b>      | <b>Inside Sales</b>  |
| <b>Michael Anderson</b> | <b>Precision Ag Products<br/>Equipment Service</b>   |
| <b>Wes Hobgood</b>      | <b>Parts &amp; Service</b>   |
| <b>Kimbrow Grizzle</b>  | <b>Parts &amp; Service</b>   |

**This page is left blank intentionally.**

## **Warranty Policy**

### **A) Standard Warranty:**

Chandler Equipment Company warrants that equipment manufactured by Chandler Equipment Company, under normal conditions of use and service, shall be free from material defects due to faulty manufacturing for the period listed below.

- a. Poultry Litter Spreaders and Conveyors – Six (6) Months
- b. Fertilizer and Lime Pull Type Spreader – Six (6) Months
- c. Fertilizer Tenders (Trailer or Truck Mounted) – Six (6) Months
- d. Fertilizer and Lime Chassis Mounted Spreaders – One (1) Year

**This warranty period is from the date of delivery to the original owner.**

(Warranty period is on equipment built after July 1, 2012)

### **B) Warranty Approval:**

- a. Any and All warranty claims must be approved in writing by Chandler Equipment Company prior to any work being done.
- b. **ANY WORK DONE WITHOUT PRIOR WRITTEN APPROVAL WILL NOT BE COVERED UNDER WARRANTY AND THE CUSTOMER / DEALER WILL BE RESPONSIBLE FOR ALL COST.**

### **C) Warranty Claim Forms: (Dealer Only)**

- a. Warranty claim form / forms will be supplied to Dealer upon request.
- b. Warranty claim forms are available in 2 part paper form or in an electronic format.
- c. All warranty claims must include serial number, date of purchase, customer name and date of sale to original owner. (See attached warranty claim instructions for guidelines on filling out warranty claim form)
- d. Improperly filed or misleading information on warranty claims shall result in warranty claim being denied.
- e. **ALL WARRANTY CLAIMS MUST BE FAXED TO (770) 535-1265.**

### **D) Labor and Repair Cost: (Dealers Only)**

- a. Labor for any repairs must be approved prior to any work being done.
- b. Labor rate (per hour) will be determined by Chandler Equipment Company, See Chandler Labor Rate List.
- c. Also Chandler Equipment Company retains the right to adjust any and all warranty claims.

### **E) Dealer Responsibility:**

- a. Dealer shall be first line in all communications with the customer.
- b. Dealer shall also maintain good and open communications between the customer and Chandler Equipment in order to resolve warranty issues.
- c. Dealer shall be responsible for informing the customer of operating procedures, safety precautions and normal maintenance to help avoid any warranty issues.
- d. Promptly inform Chandler Equipment of any possible warranty issues.
- e. Dealer is responsible for making every effort to resolve warranty issues in a timely manner.
- f. Notify Chandler Equipment on any possible non-warranty issues, such as any modification made to equipment.

### **F) Original Chandler Genuine Parts:**

- a. Chandler Equipment Company will only warranty equipment that uses Chandler Genuine Parts. Any equipment that is sold by a dealer with parts other than Original Chandler Genuine parts shall Void Any and All warranties

### **G) Replacement Parts Shipping:**

- a. Chandler Equipment Company shall send Chandler Genuine Parts for warranty replacement. Chandler Equipment shall NOT warranty any part or parts replaced by the Customer/Dealer that are not Chandler Genuine Parts.
- b. Cost of any part or parts that are replaced by the Customer / Dealer that are not Chandler Genuine Parts shall be the sole responsibility of the Customer / Dealer.  
All replacement parts covered under warranty will be shipped via regular UPS. The cost of any parts shipped **UPS-Next Day Air** will be the sole responsibility of the Customer/Dealer.

### **H) Parts Returns:**

- a. All parts replaced under warranty will be returned to Chandler Equipment Company within 20 days of replacement for warranty evaluation. All parts returned for warranty evaluation must be in its original state free of modifications. Any modifications will result in the warranty claim being denied and the part or parts returned back to the customer/dealer.
- b. Any hydraulic components returned must be assembled (in original state) and with the ports plugged to prevent any contamination. Any hydraulic component that has been disassembled will VOID the warranty claim and the part or parts returned back to the customer/dealer.
- c. All Returned Parts for warranty evaluation must be clearly tagged with the following information.
  - I. RMA number
  - II. Customer or Dealer Name, address, phone number and contact person
  - III. Equipment serial number



#### IV. Complete description of problem

##### **I) Misuse or Improper Installation:**

- a. Any equipment, parts, or components that have been damaged by improper installation or misuse will **NOT** be covered under this warranty.
- b. Chandler Equipment accepts no responsibility or liability of any kind due to improper installation of equipment or parts on any product manufactured by Chandler Equipment Company. This includes, but is not limited to, any damages to personal property, crops, or any other equipment.

##### **J) Incomplete Equipment and Dealer Add-Ons:**

- a. Chandler Equipment does not warrant any equipment sold **INCOMPLETE**. This includes (but is not limited to) axles, tires, any hydraulic components or paint.
- b. Any Non Genuine Chandler Parts that are installed as aftermarket add-ons by anyone not approved in writing by Chandler Equipment Company shall **VOID ALL WARRANTIES.**
- c. Chandler Equipment Company accepts no responsibility, nor shall warrant any equipment or any component that is damaged due to any type Control System not sold and installed by Chandler Equipment Company.

##### **K) Items Not Covered Under this Warranty:**

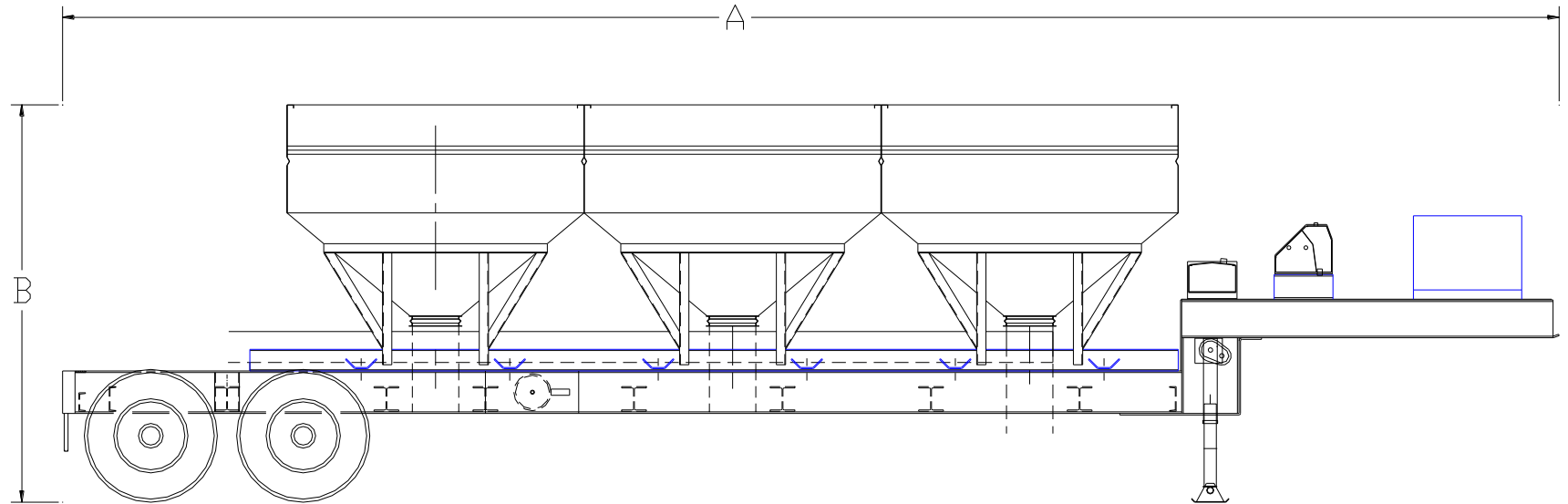
- a. Any equipment that has been modified from its original state.
- b. Any equipment used for any other purpose that what it was originally designed for.
- c. Any travel time, cleaning of equipment, unloading of material, or towing.
- d. Any cost of materials that have been applied improperly due to the lack of customer / dealer not following proper operating instructions.

**This page is left blank intentionally.**

# **Section 1**

## **Basic Information**

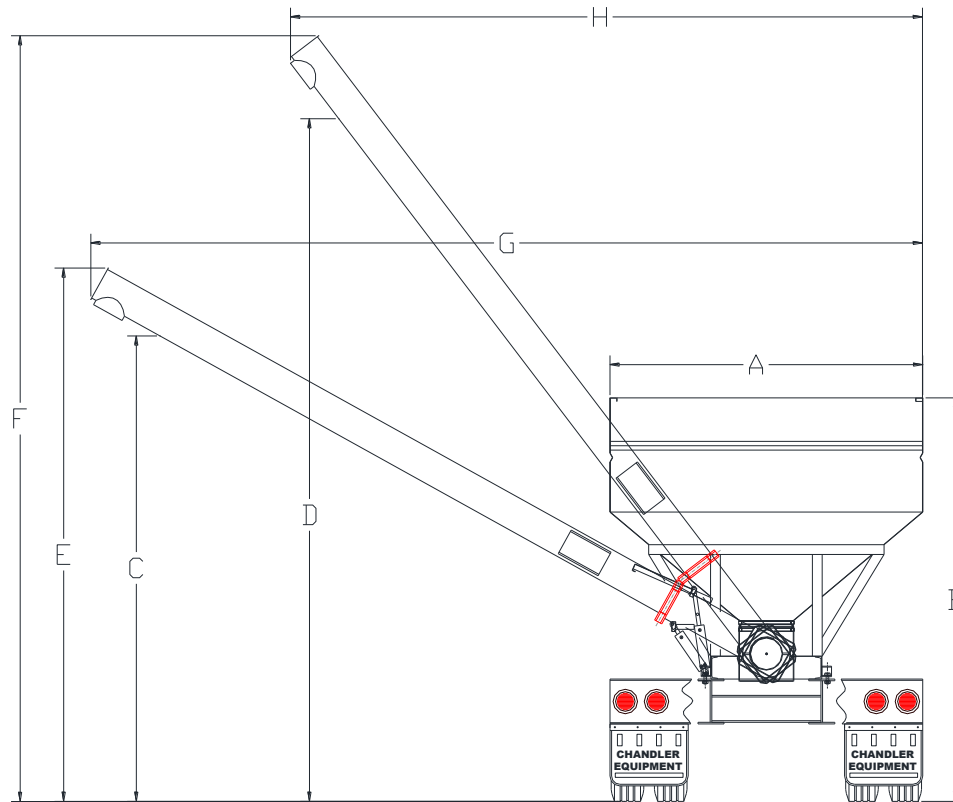
## 1) Dimensions – Side View



| Ref. | Description                     | Measurement |
|------|---------------------------------|-------------|
| A    | Overall Length                  | 40' 4"      |
| B    | Overall Height – Transport Mode | 10' 9"      |

**NOTE: Overall height does NOT include tarp or end caps.**

## 2) Dimensions – Rear View



| Ref. | Description                            | Measurement |
|------|--|-------------|
| A    | Overall Width – Transport Mode         | 8'          |
| B    | Overall Height – Transport Mode        | 10' 4"      |
| C    | Discharge Height Lowered               | 11' 11"     |
| D    | Discharge Height Raised                | 17' 5"      |
| E    | Overall Height Discharge Auger Lowered | 13' 8"      |
| F    | Overall Height Discharge Auger Raised  | 19' 7"      |
| G    | Overall Width Discharge Auger Lowered  | 21' 3"      |
| H    | Overall Width Discharge Auger Raised   | 16' 2"      |

### 3) Deutz D2011L04i Diesel Engine Specifications

#### Deutz D2011L04i Engine

|   |   |
|---|---|
| <b>Displacement</b>   | <b>221 cu. in.<br/>3.62 liters</b>  |
| <b>Number of Cylinders</b>  | <b>4</b>  |
| <b>Bore and Stroke</b>  | <b>3.8 x 5.0 inches<br/>96 x 125 mm</b>   |
| <b>Horsepower</b><br><b>Net Intermittent</b><br><b>Net Intermittent</b>   | <b>62 @ 2600 rpm<br/>46 kW @ 2600 rpm</b>   |
| <b>Low Idle RPM</b>   | <b>900 rpm</b>  |
| <b>High Idle RPM</b>  | <b>2600 Rpm</b>   |
| <b>Compression Ratio</b>  | <b>19:01</b>  |
| <b>Compression Pressure</b>   | <b>362 - 435 psi<br/>25 - 30 bar</b>  |
| <b>Governor</b>   | <b>Centrifugal Mechanical</b>   |
| <b>Valve Clearance, Cold</b><br><b>Intake</b><br><br><b>Exhaust</b>   | <b>0.012 in<br/>.3 mm<br/>.020 in<br/>.5 mm</b>   |
| <b>Lubrication System</b><br><b>Oil Pressure, Hot @ 2000 rpm</b><br><br><b>Oil Capacity</b><br><b>Including Filter</b><br><b>Oil Viscosity Requirements</b><br><b>Oil Temperature Switch</b><br><b>Toque</b><br><br><b>Temperature Switch Point</b> | <b>40 - 60 psi<br/>2.8 - 4.1 bar<br/>9.5 quarts<br/>9 liters<br/>10-W40*<br/>8 - 18 ft-lbs<br/>11 - 24 Nm<br/>220° F<br/>104° C</b> |
| <b>Oil Pressure Switch</b><br><b>Toque</b>  | <b>8 - 18 ft-lbs<br/>11 - 24 Nm</b>   |

|  |                                   |
|--|-----------------------------------|
| <b>Oil Pressure Switch Point</b>   | <b>22 psi<br/>1.5 bar</b>         |
| <b>Fuel Injection System</b>   |                                   |
| <b>Injection Pump Make</b>   | <b>Bosch</b>                      |
| <b>Injection Pump Pressure, Max</b>  | <b>15000 psi<br/>1034 bar</b>     |
| <b>Injector Opening Pressure</b>   | <b>3046 psi<br/>210 bar</b>       |
| <b>Fuel Requirement, refer to the engine Operator's Manual on your machine</b> |                                   |
| <b>Starter Motor</b>   |                                   |
| <b>Current Draw, Normal Load</b>   | <b>140 - 200 A</b>                |
| <b>Brush Length, New</b>   | <b>.72 in<br/>18.5 mm</b>         |
| <b>Brush Length, Minimum</b>   | <b>.27 in<br/>7 mm</b>            |
| <b>Battery</b>   |                                   |
| <b>Type</b>  | <b>12V. Group 31</b>              |
| <b>Quantity</b>  | <b>1</b>                          |
| <b>Cold Cranking Amps</b>  | <b>1000 A</b>                     |
| <b>Reserve Capacity @ 25A Rate</b>   | <b>200 minutes</b>                |
| <b>Alternator Output</b>   | <b>60 A @ 14V DC</b>              |
| <b>Fan Belt Deflection</b>   | <b>3/8 - 1/2 in<br/>9 - 12 mm</b> |

**\* Extreme operating temperatures may require the use of alternative engine oil.**

**NOTE: For complete Deutz D2011L04i Diesel Engine owner's manual visit [www.chandlerspreaders.com](http://www.chandlerspreaders.com) and look under product manuals.**

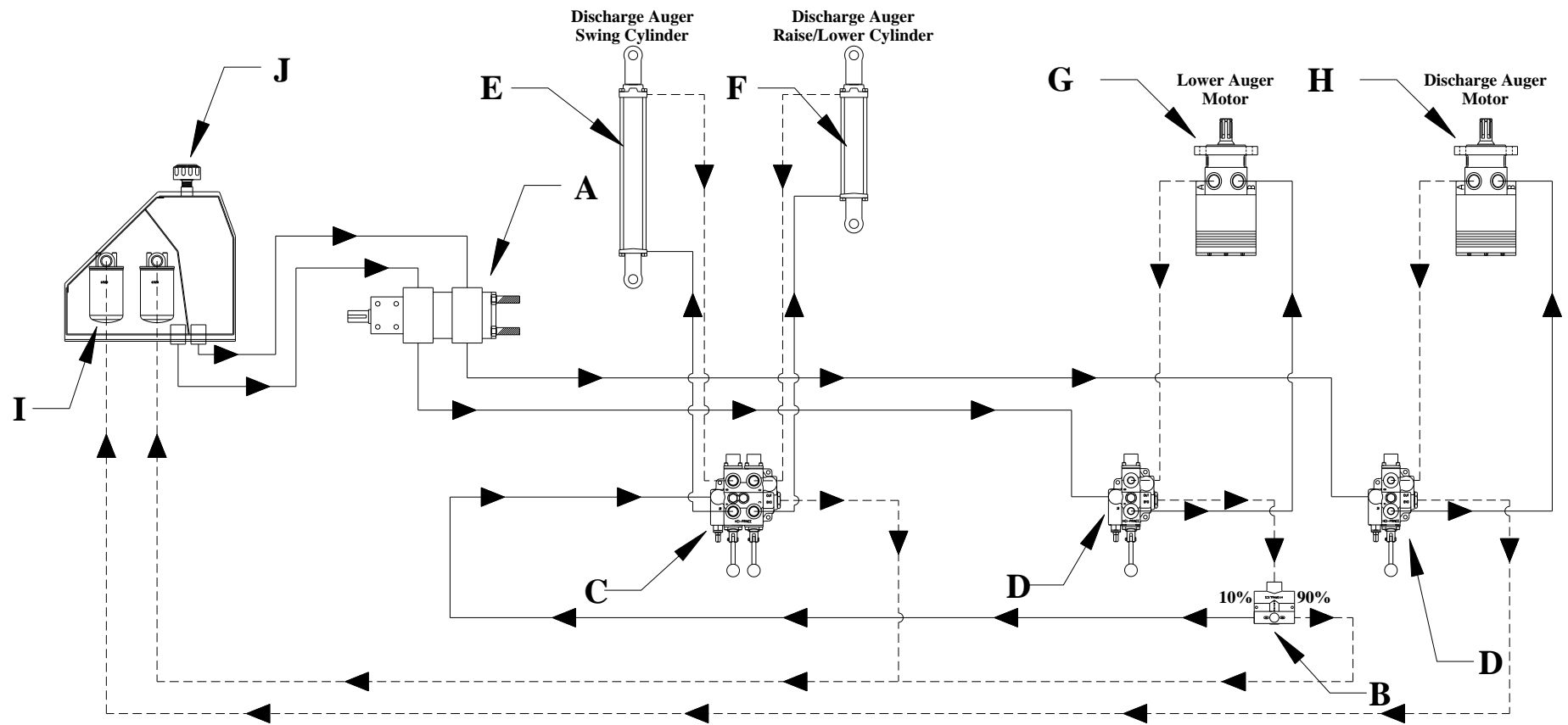
**This page is left blank intentionally.**



# **Section 2**

# **Hydraulic System**

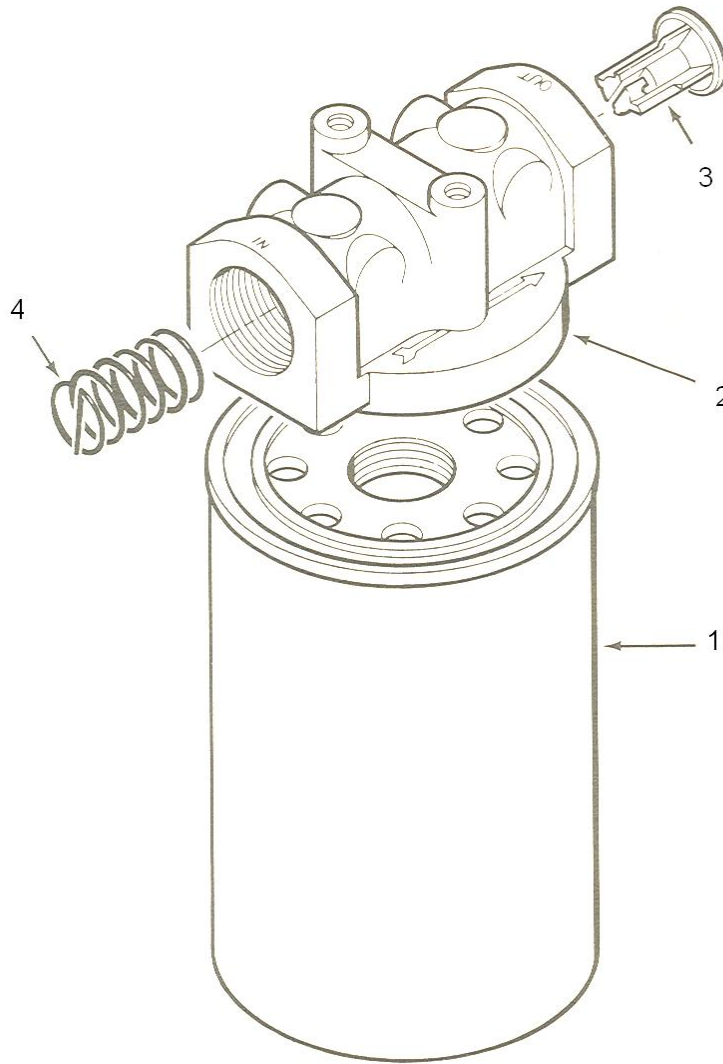
# Hydraulic System SDT-MH - 24 Ton Tender



## Hydraulic System Parts List

| Ref. | Part Number | Description  | Qty. |
|------|-------------|--|------|
| A    | 400-C-347   | P197 1" x 1" - Tandem Pump                         | 1    |
| B    | 400-1-353   | B-50, 3/4 90:10 SPLITTER                           | 1    |
| C    | 400-1-336   | RD526 PRINCE VALVE DOUBLE<br>RD526CCAA5A4B1-DBL    | 1    |
| D    | 400-1-337   | RD516 PRINCE VALVE SINGLE - DETENT<br>RD516CB5A4B1 | 2    |
| E    | 400-1-304   | 2.5" X 14" Cylinder – Swing Out                    | 1    |
| F    | 400-1-300   | 2.5" X 8" Cylinder – Raise/Lower                   | 1    |
| G    | 400-R-107A  | MB22 Torque Motor – Lower Auger                    | 1    |
| H    | 400-R-103   | MB12 Torque Motor – Discharge Auger                | 1    |
| I    | 400-1-318   | Hydraulic Filter Assembly                          | 2    |
|      | 400-1-319   | Filter Element - Only                              | 2    |
| J    | 400-1-317   | Breather Cap                                       | 1    |
| *    | 400-1-322   | Sight Gauge (Oil Tank)                             | 1    |

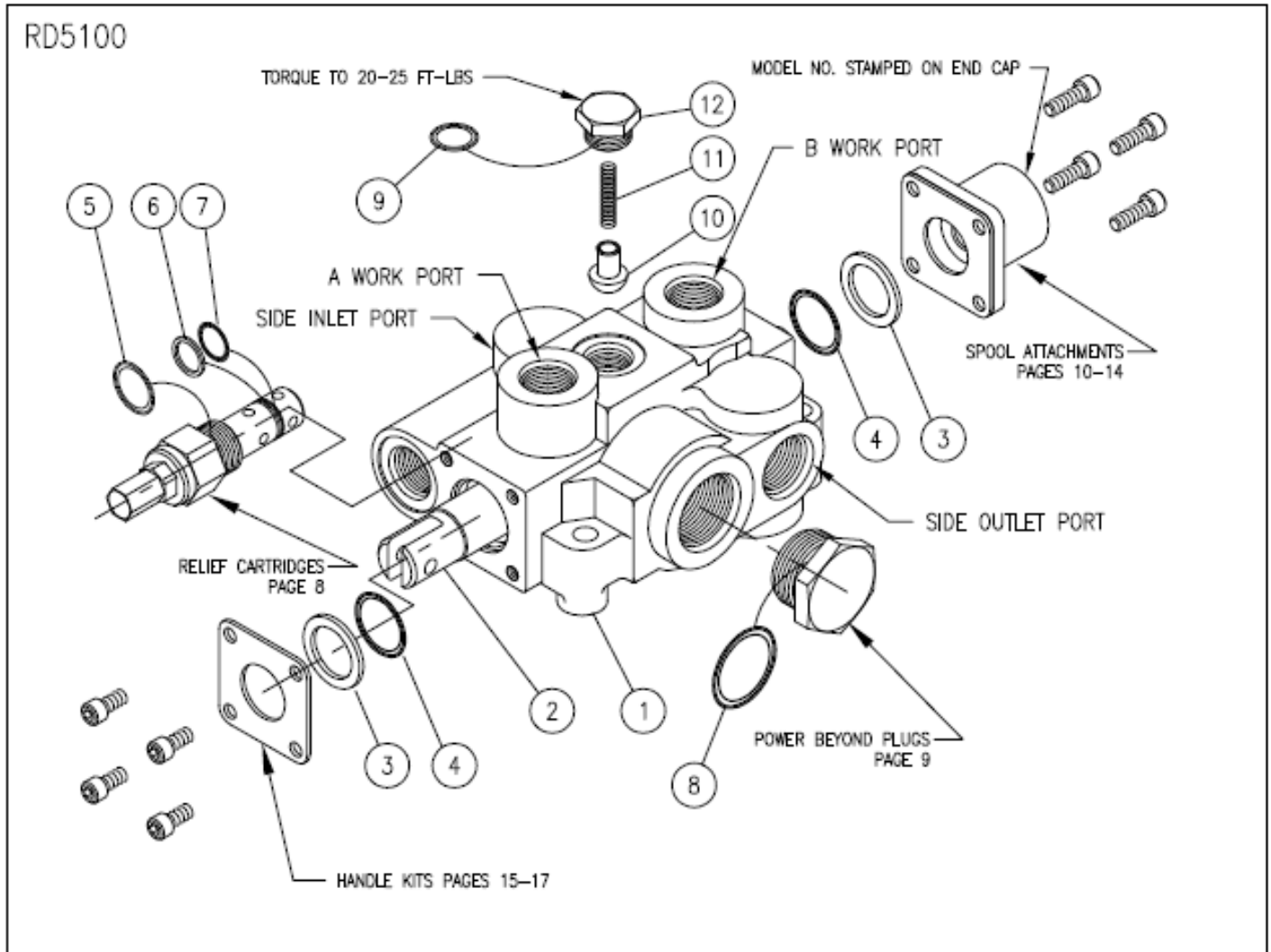
## Hydraulic Filter Assembly



**1) Filter Element 400-1-319**

**2) Filter Head 400-1-319A (when ordering this part # items 3,4 are included)**

## Hydraulic Valve (Prince – RD5100 Series)



RD5100 1 SPOOL MONO-BLOCK VALVE

| ITEM | QTY | PART NO.   | DESCRIPTION        |
|------|-----|------------|--------------------|
| 1    | 1   |            | 1 SPOOL VALVE BODY |
| 2    | 1   | SEE NOTE 1 | SPOOL              |
| 3    | 2   | 670500010  | SPOOL SEAL BACK-UP |
| 4    | 2   | 240000213  | 213 O-RING         |
| 5    | 1   | 240000116  | 116 O-RING         |
| 6    | 1   | 240019015  | 015 BACK-UP        |
| 7    | 1   | 240000015  | 015 O-RING         |
| 8    | 1   | 240000916  | 916 O-RING         |
| 9    | 1   | 240000908  | 908 O-RING         |
| 10   | 1   | 670100001  | LOAD CHECK POPPET  |
| 11   | 1   | 670300007  | LOAD CHECK SPRING  |
| 12   | 1   | 671600001  | LOAD CHECK PLUG    |

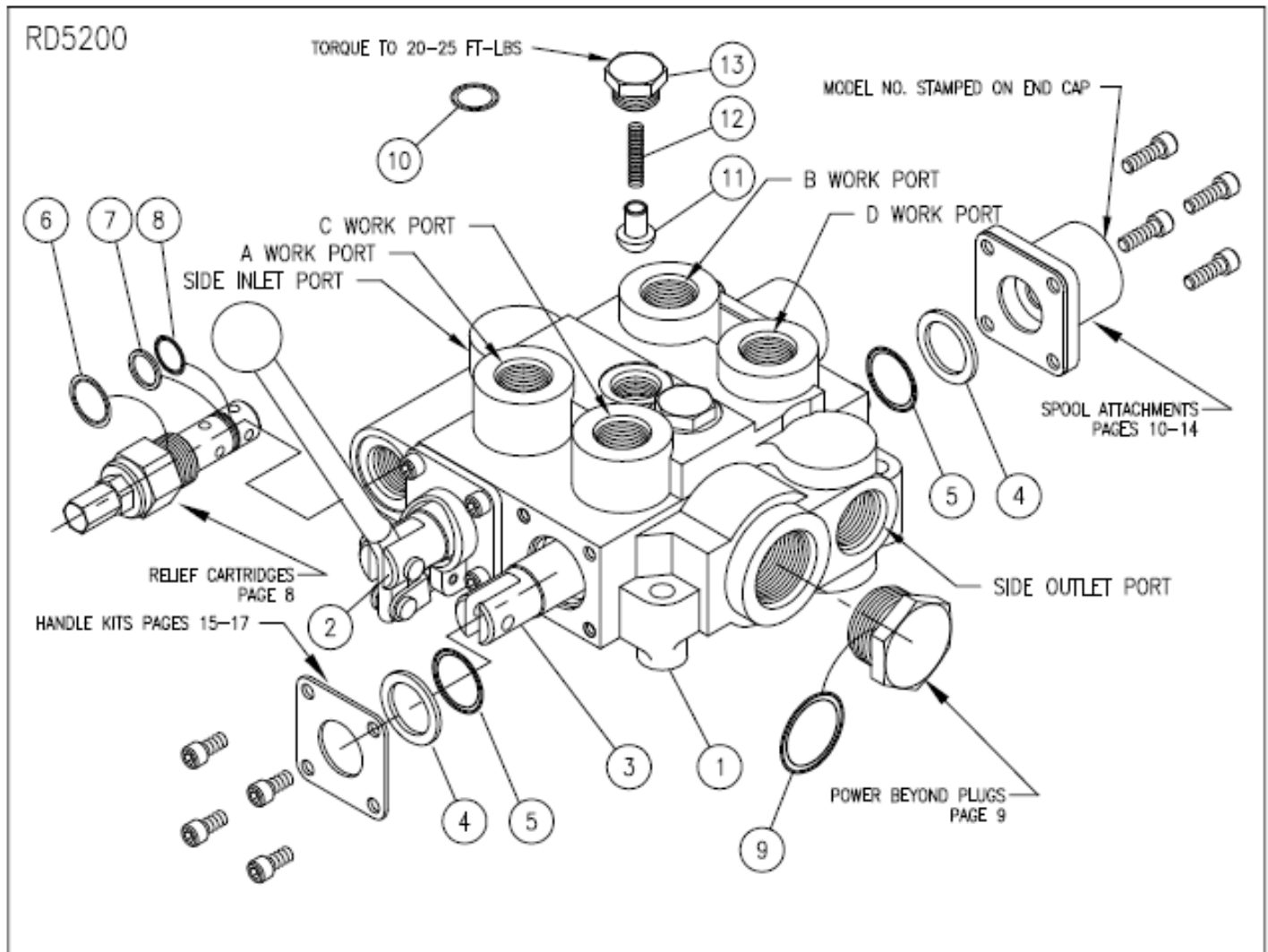
}These are matched parts and are not sold seperately.

}SEAL KIT 660551001 (PLUS OTHERS)

}LOAD CHECK KIT, NO. 660150015

**NOTE:** Chandler Equipment only stocks a limited selection of replacement parts for this style valve. Please check with your local dealer or our Parts Department for availability of replacement parts.

## Hydraulic Valve (Prince – RD5200 Series)



RD5200 2 SPOOL MONO-BLOCK VALVE

| ITEM | QTY | PART NO.   | DESCRIPTION        |
|------|-----|------------|--------------------|
| 1    | 1   |            | 2 SPOOL VALVE BODY |
| 2    | 1   | SEE NOTE 1 | FIRST SPOOL        |
| 3    | 1   | SEE NOTE 1 | SECOND SPOOL       |
| 4    | 4   | 670500010  | SPOOL SEAL BACK-UP |
| 5    | 4   | 240000213  | 213 O-RING         |
| 6    | 1   | 240000116  | 116 O-RING         |
| 7    | 1   | 240019015  | 015 BACK-UP        |
| 8    | 1   | 240000015  | 015 O-RING         |
| 9    | 1   | 240000916  | 916 O-RING         |
| 10   | 2   | 240000908  | 908 O-RING         |
| 11   | 2   | 670100001  | LOAD CHECK POPPET  |
| 12   | 2   | 670300007  | LOAD CHECK SPRING  |
| 13   | 2   | 671600001  | LOAD CHECK PLUG    |

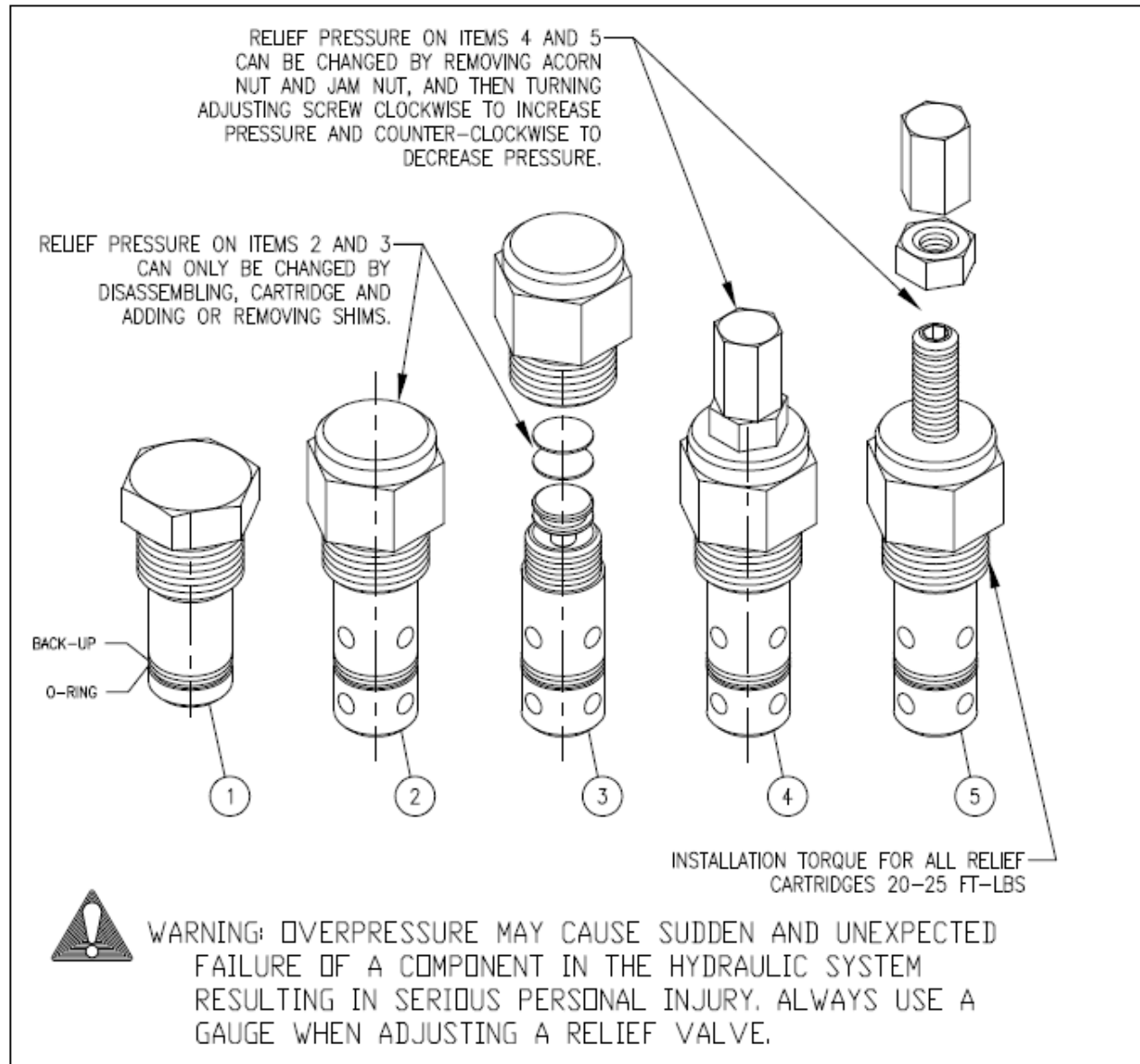
These are matched parts and are not sold separately.

SEAL KIT 660552001 (PLUS OTHERS)

LOAD CHECK KIT, NO. 660150015  
(2 REQUIRED PER VALVE)

**NOTE:** Chandler Equipment only stocks a limited selection of replacement parts for this style valve. Please check with your local dealer or our Parts Department for availability of replacement parts.

## Hydraulic Valve – Relief Pressure Adjustment



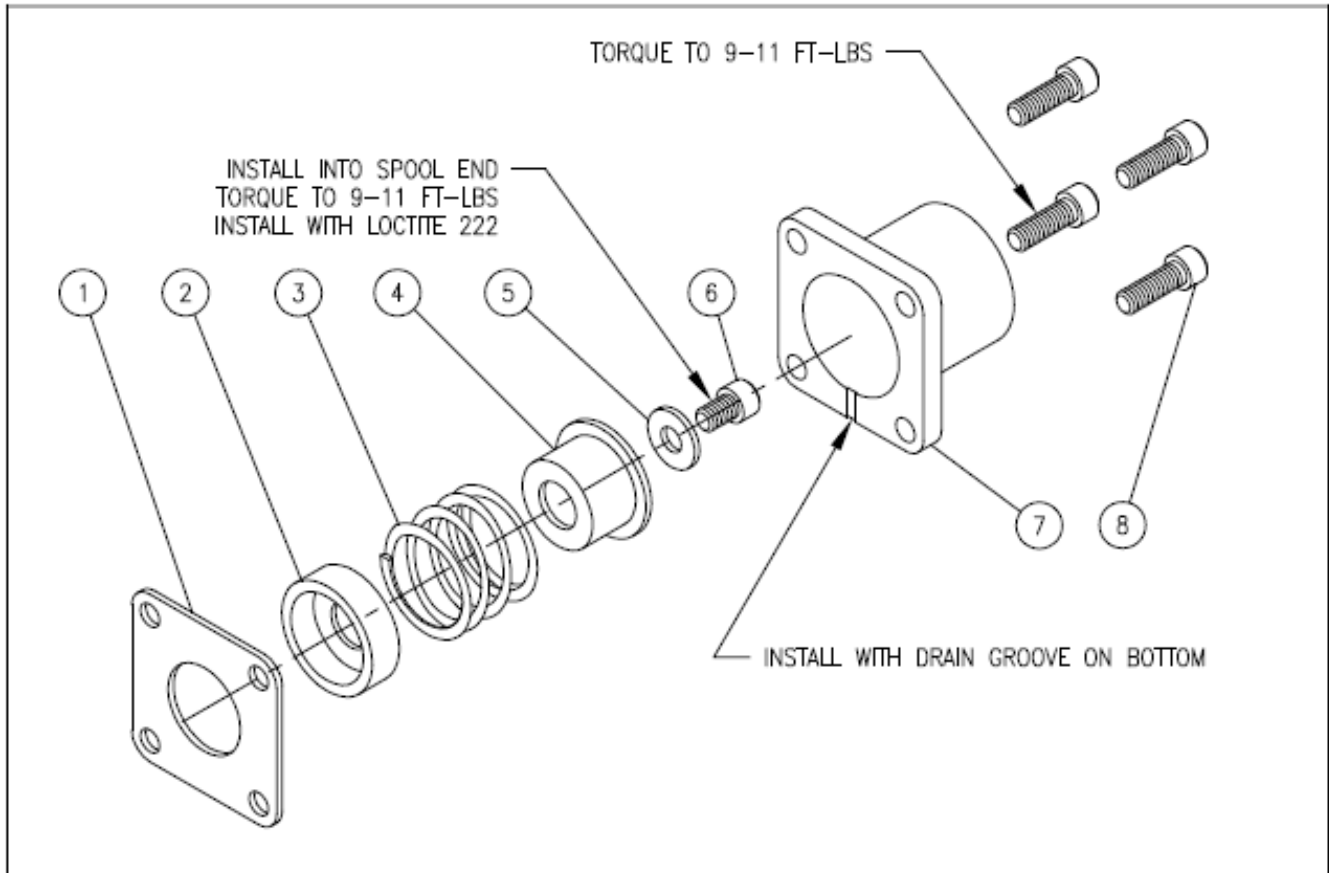
RD5000 RELIEF CARTRIDGES

| ITEM | QTY | PART NO. (UNTESTED) | DESCRIPTION                                 | PRESET CARTRIDGE | SETTING  |
|------|-----|---------------------|---|------------------|----------|
| 1    | 1   | 660250006           | NO RELIEF PLUG (OPTION 1)                   |                  |          |
| 2    | 1   | 660250005           | SHIM ADJUSTABLE RELIEF 500-1500 (OPTION 2)  | RV-ONL           | 1000 PSI |
| 3    | 1   | 660250004           | SHIM ADJUSTABLE RELIEF 1500-3000 (OPTION 3) | RV-ONH           | 2000 PSI |
| 4    | 1   | 660250003           | ADJUSTABLE RELIEF 500-1500 (OPTION 4)       | RV-OL            | 1000 PSI |
| 5    | 1   | 660250002           | ADJUSTABLE RELIEF 1500-3000 (OPTION 5)      | RV-OH            | 2000 PSI |
|      |     | 672000101           | .015 SHIM                                   |                  |          |
|      |     | 672000102           | .033 SHIM                                   |                  |          |
|      |     | 672000103           | .060 SHIM                                   |                  |          |

**NOTE:** Refer to relief cartridges 4 and 5 for relief pressure adjustment.

**NOTE:** Chandler Equipment only stocks a limited selection of replacement parts for this style valve. Please check with your local dealer or our Parts Department for availability of replacement parts.

## Hydraulic Valve – Spring Center Spool Attachment



RD5000 SPRING CENTER SPOOL ATTACHMENT

| ITEM | QTY | PART NO.  | DESCRIPTION          |
|------|-----|-----------|----------------------|
| 1    | 1   | 670500003 | RETAINER PLATE       |
| 2    | 1   | 671400001 | STOP CUP (INNER)     |
| 3    | 1   | 670300001 | CENTERING SPRING*    |
| 4    | 1   | 671400011 | STOP CUP (OUTER)     |
| 5    | 1   | 670500004 | WASHER               |
| 6    | 1   | 170003007 | SOCKET HD. CAP SCREW |
| 7    | 1   | 670500005 | END CAP              |
| 8    | 4   | 170003008 | SOCKET HD. CAP SCREW |

SPRING CENTER KIT NO. 660150001

\*STANDARD CENTERING SPRING CAN BE REPLACED WITH MEDIUM HEAVY SPRING PART NO. 670300047 OR HEAVY SPRING 670300043.

**NOTE:** Chandler Equipment only stocks a limited selection of replacement parts for this style valve. Please check with your local dealer our Parts Department for availability of replacement parts.



# Hydraulic Cylinder

## Seal Replacement Guide for Tie Rod Cylinders

1. Remove all port obstructions and make sure all oil has been drained from the cylinder.
2. Clamp rod end mount (6) in vise and fully extend cylinder. If there is no mount. Protect rod threads while clamping.
3. Remove the 4 tie bolt nuts (7) on gland end and un-thread the bolts from the base end.
4. Remove the base (5) and slip the tube off of the gland (3) if necessary, gently tap the gland and base with a rubber Mallet to loosen.
5. Remove piston nut (13) and slip piston (4) and gland off rod (1) drive piston off with gland. Remove gland from the piston end of the rod.
6. Remove old seals from gland, piston and base.
7. Wash and check all parts for excessive wear or obvious defect which might interfere with operation.
8. Lubricate all new seals with STP or heavy oil before assembling.
9. Install new seals (15) (16) (18) & (19) in gland taking care to position the I. D. U-cup (15) toward the pressure as shown in Figure 1.
10. Install piston seal & energizer (17) and internal o-ring (20) into piston.
11. Install o-ring (18) and back-up (19) on the base. See Figure 2 for o-ring/back-up orientation.
12. With a twisting motion push gland onto rod from the piston end.
13. Torque piston nut (13) according to Table #1. Lube gland & piston seals.
14. Slide tube over piston and onto gland. Replace base making sure parts are properly aligned to avoid cutting o-rings.
15. Replace tie rods and torque nuts as specified in Table #1. Use a cross-tightening pattern.
16. Hand stroke cylinder to check for binding.
17. Your cylinder is now ready for operation.

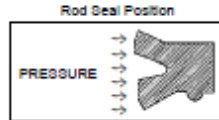


Figure 1.



Figure 2

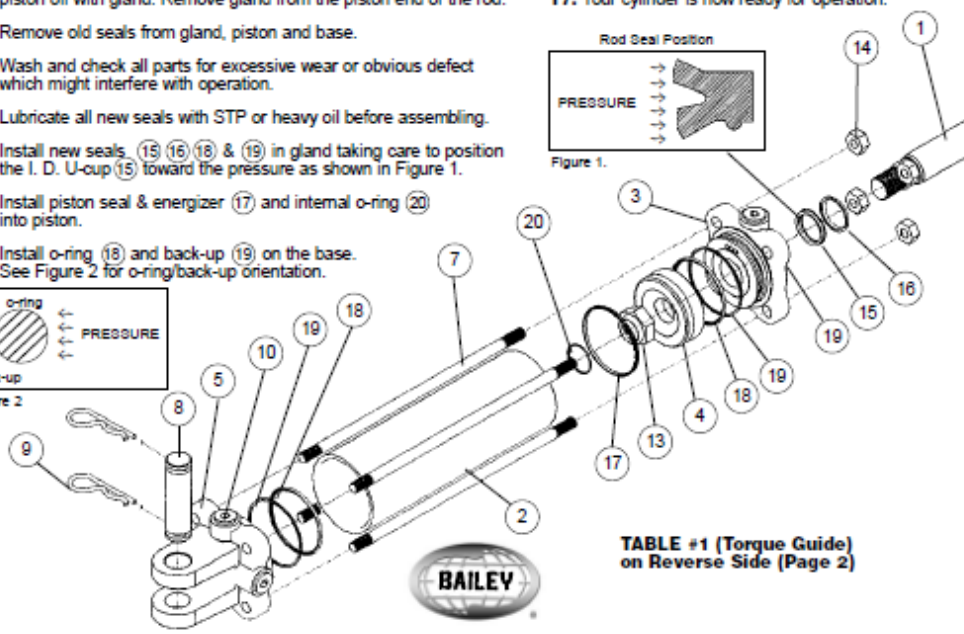


TABLE #1 (Torque Guide)  
on Reverse Side (Page 2)

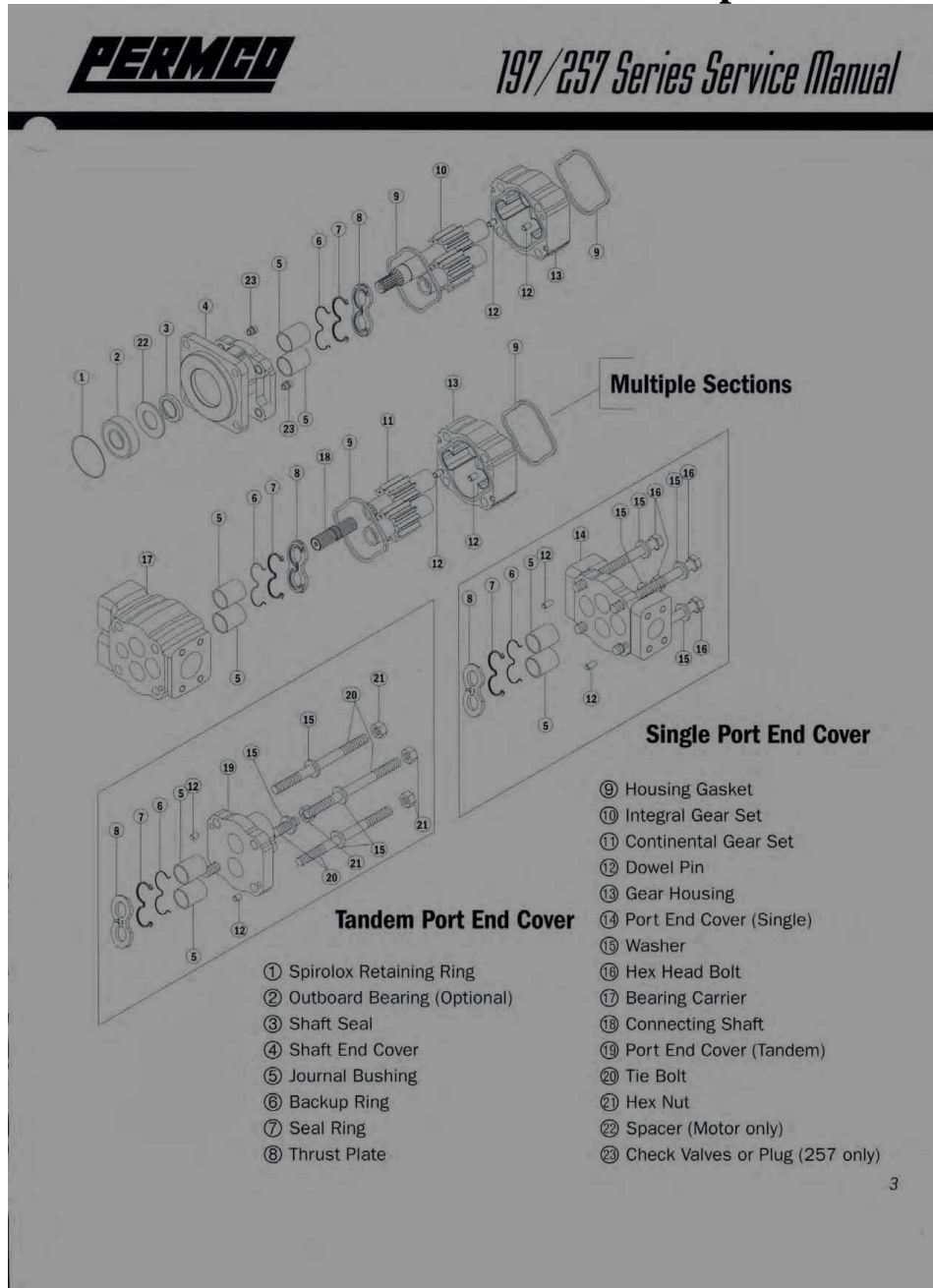
| LINE NUMBER | DESCRIPTION           | QUANTITY |
|-------------|-----------------------|----------|
| 1           | PISTON ROD            | 1        |
| 2           | TUBE                  | 1        |
| 3           | GLAND(HEAD)           | 1        |
| 4           | PISTON                | 1        |
| 5           | BASE CLEVIS           | 1        |
| 6           | ROD CLEVIS            | 1        |
| 7           | TIE ROD               | 4        |
| 8           | CLEVIS PIN            | 2        |
| 9           | R-CLIP                | 4        |
| 10          | PORT PLUG             | 3        |
| 11          | CLEVIS BOLT           | 1        |
| 12          | CLEVIS NUT            | 1        |
| 13          | PISTON NUT            | 1        |
| 14          | TIE ROD NUT           | 4        |
| 15          | ROD SEAL              | 1        |
| 16          | ROD WIPER             | 1        |
| 17          | PISTON SEAL/ENERGIZER | 1        |
| 18          | ORING                 | 2        |
| 19          | ORING BACK-UP         | 2        |
| 20          | PISTON INTERNAL ORING | 1        |

THE USE AND RECEIPT OF THIS INFORMATION BY ANY RECIPIENT IS SUBJECT TO ALL LIMITATIONS AND RESTRICTIONS SET FORTH ON THE REVERSE SIDE (PAGE 2) OF THIS INFORMATION SHEET. IN NO INSTANCE DOES BAILEY OR THE CYLINDER MANUFACTURER ASSUME ANY RESPONSIBILITY FOR MALFUNCTIONS AND/OR DAMAGE TO EQUIPMENT OF ANY TYPE BASED ON ANY USE OF THIS INFORMATION.

## Parts Available from Chandler Equipment

| Part #    | Description              | QTY |
|-----------|--------------------------|-----|
| 400-1-298 | Seal Kit - 2.5" Cylinder | 1   |
| 400-1-293 | Clevis Pin Kit           | 2   |

## P197 1" x 1" – Tandem Pump



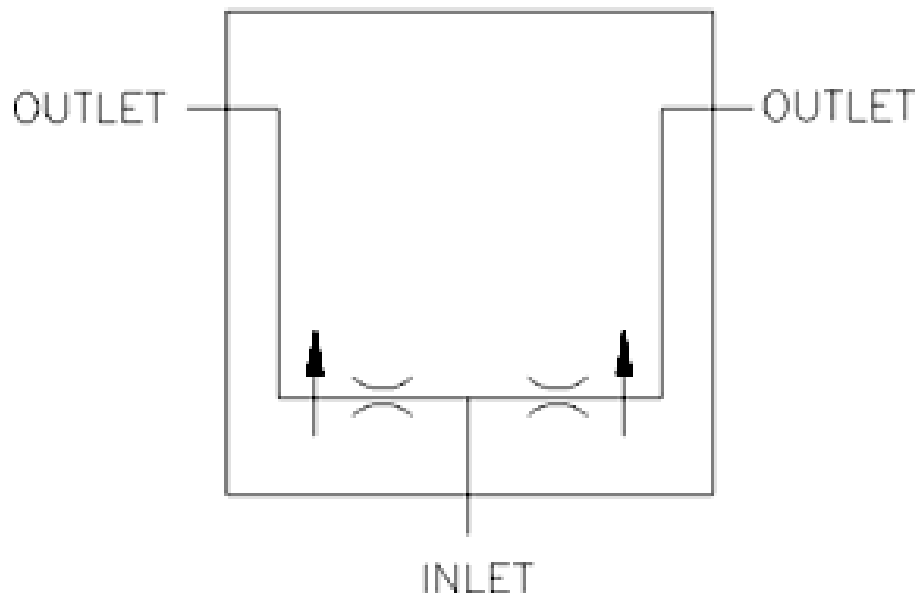
| Ref. | Part Number | Description                | Qty. |
|------|-------------|----------------------------|------|
| N/A  | 400-C-347   | P197 1" x 1" – Tandem Pump | 1    |

**NOTE:** Chandler Equipment only stocks a limited selection of replacement parts for this style pump. Please check with your local dealer or our Parts Department for availability of replacement parts not listed.

## Splitter Valve – B50 90:10



B50



# MB-220101 – Lower Auger Motor

Service Bulletin 050016

Issued February 2003

For TF (MB) and TG (ME) Torqmotor Seal Kits

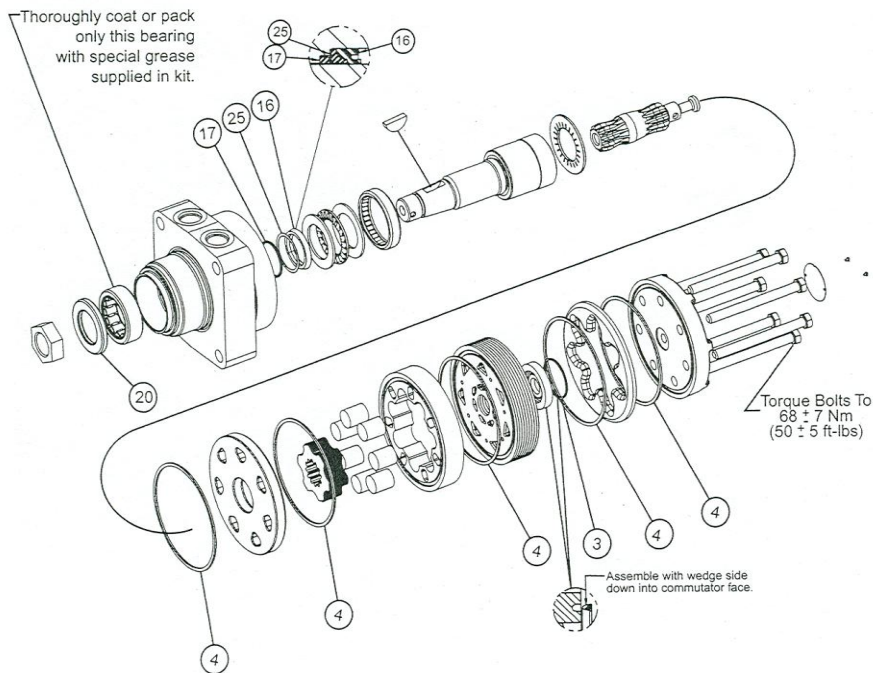
SK000092 (Buna), SK000093 (Fluorocarbon),

SK000099 (Vespel Commutator Seal)

Reference Torqmotor Service Manual SM1512.

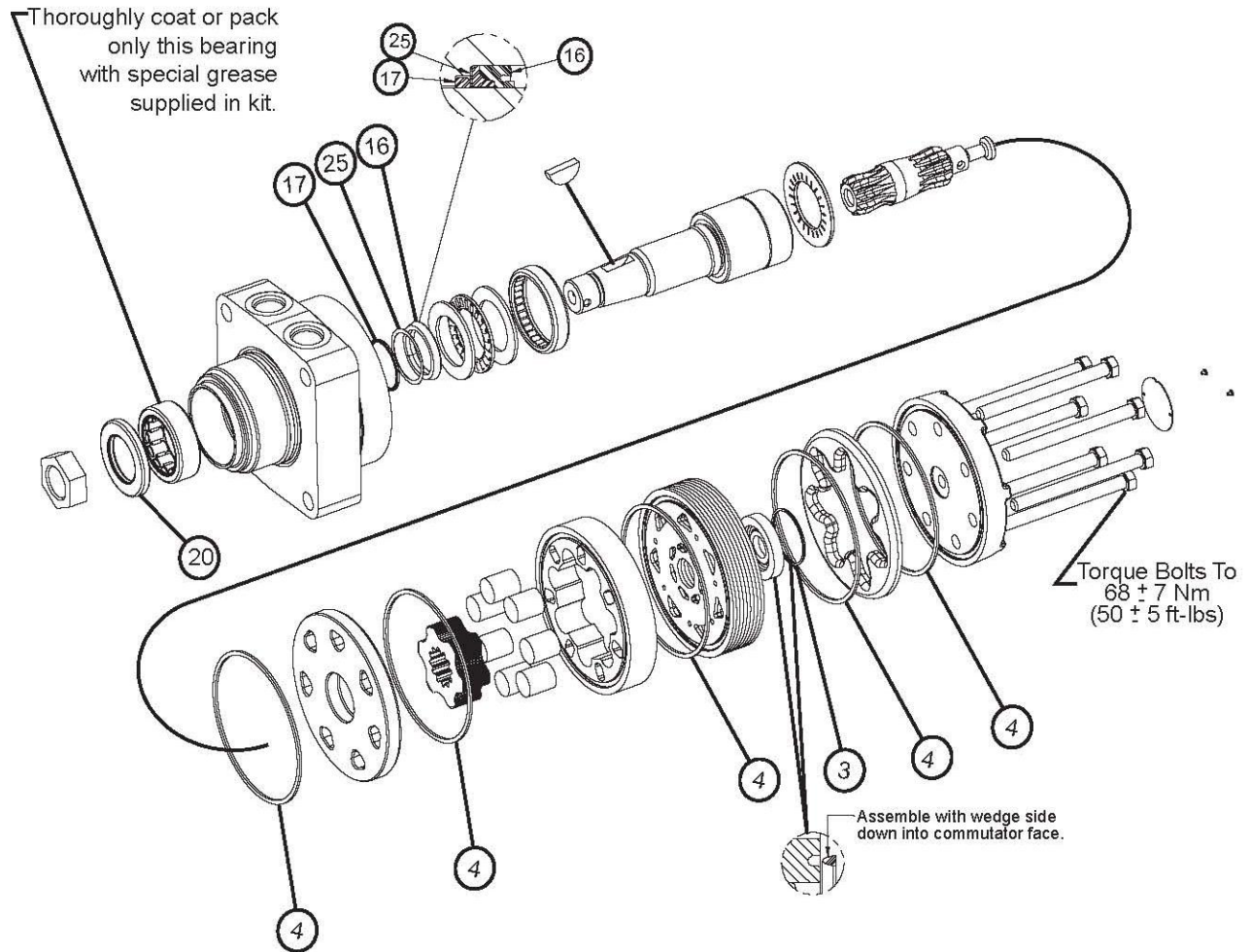


| QTY | Item | Description       | Buna P/N | Fluorocarbon P/N | Vespel P/N |
|-----|------|-------------------|----------|------------------|------------|
| 1   | 17   | Back up ring      | 028515   | 028515           | 028515     |
| 1   | 25   | Back up washer    | 029118   | 029118           | 029118     |
| 1   | 3    | Commutator Seal   | 032435   | 032435           | 032439     |
| 1   | 16   | Shaft Seal        | 032817   | 032818           | 032817     |
| 6   | 4    | Body Rings        | 032819   | 032820           | 032819     |
| 1   | 20   | D&W Seal          | 478035   | 478035           | 478035     |
| 1   |      | Bearing Lubricant | 406018   | 406018           | 406018     |
| 1   |      | Service Bulletin  | 050016   | 050016           | 050016     |



| Part #     | Description           | QTY |
|------------|-----------------------|-----|
| 400-R-107A | MB-220101AAAA – Motor | 1   |
| 400-R-109  | Seal Kit              | 1   |
| 400-R-110  | Motor Shaft           | 1   |

## MB-120101 – Discharge Auger Motor



| Part #    | Description           | QTY |
|-----------|-----------------------|-----|
| 400-R-103 | MB-120101AAAA – Motor | 1   |
| 400-R-109 | Seal Kit              | 1   |
| 400-R-110 | Motor Shaft           | 1   |

## **Tender Pressure Settings**

### **1) Checking Pressure**

- A) Run unit empty at ordinary operating speed for approximately 10 minutes. This allows oil to reach operating temperatures.
- B) Locate pressure gauge mounted above valve for each auger.
- C) Increase engine speed (RPM's) to normal operating speed.
- D) Slowly engage auger control valve while watching pressure gauge.
- E) Pressure gauge should read 2200 psi. If not adjust pressure as outlined below.

### **2) Adjusting Hydraulic Valve Pressure: (Refer to page 2-6)**

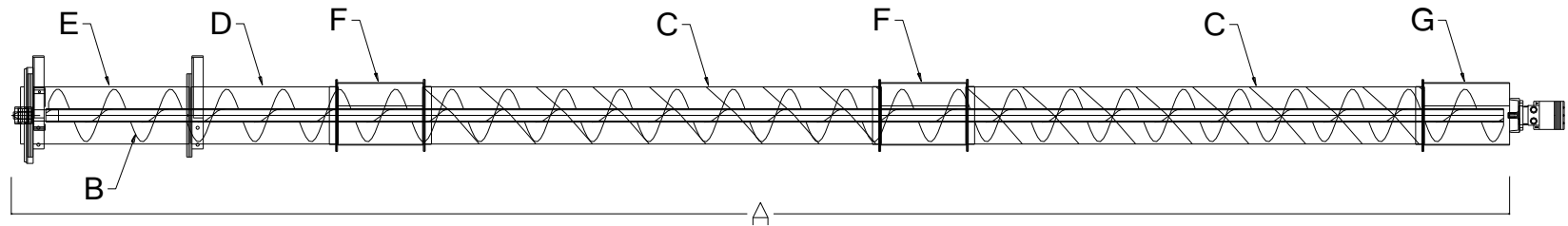
- A) Remove cap nut on valve (located on next to valve handle)
- B) Using a 5/16 Allen wrench turn adjustment screw "IN" to increase pressure or "OUT" to decrease pressure.
- C) Turn adjustment screw one half turn, then check pressure setting as outlined above.
- D) Continue this procedure until pressure gauge reads **2200 psi**.

**NOTE:** If unable to obtain 2200 psi contact your local dealer or Chandler Equipment Service Department at 1-800-243-3319

# **Section 3**

## **Auger Assembly**

## Lower Auger Assembly

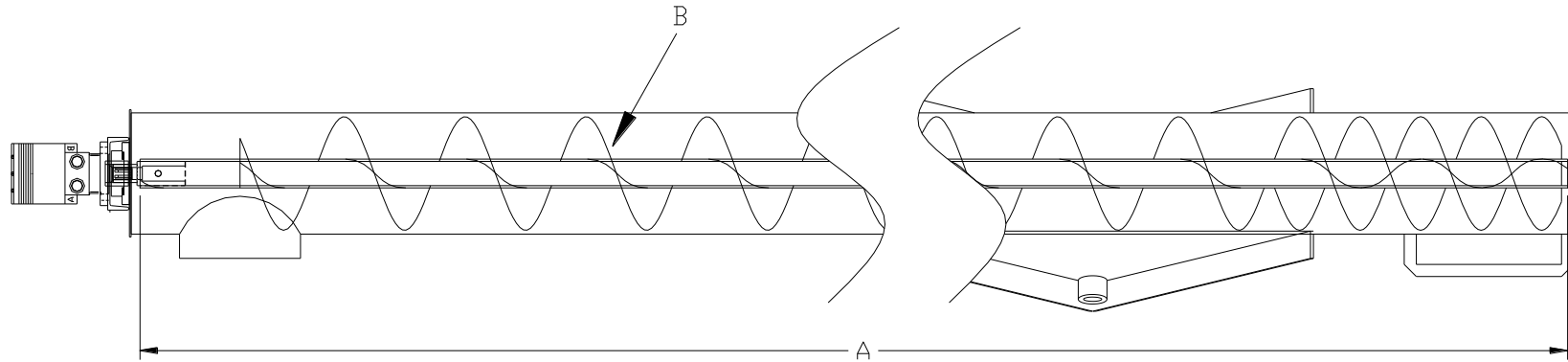


### Complete Auger Assembly Parts List

| Ref. | Part Number | Description                 | Qty. |
|------|-------------|-----------------------------|------|
| A    | 900-5-101   | Complete Lower Auger        | 1    |
| B    | 900-5-102   | Lower Auger (only)          | 1    |
| C    | 900-5-103   | Auger Tube – Forward/Aft    | 2    |
| D    | 900-5-104   | Auger Tube – Discharge      | 1    |
| E    | 900-5-105   | Auger Tube – Pivot Assembly | 1    |
| F    | 900-5-106   | Transition Box              | 2    |
| G    | 900-5-107   | Front Transition Box        | 1    |



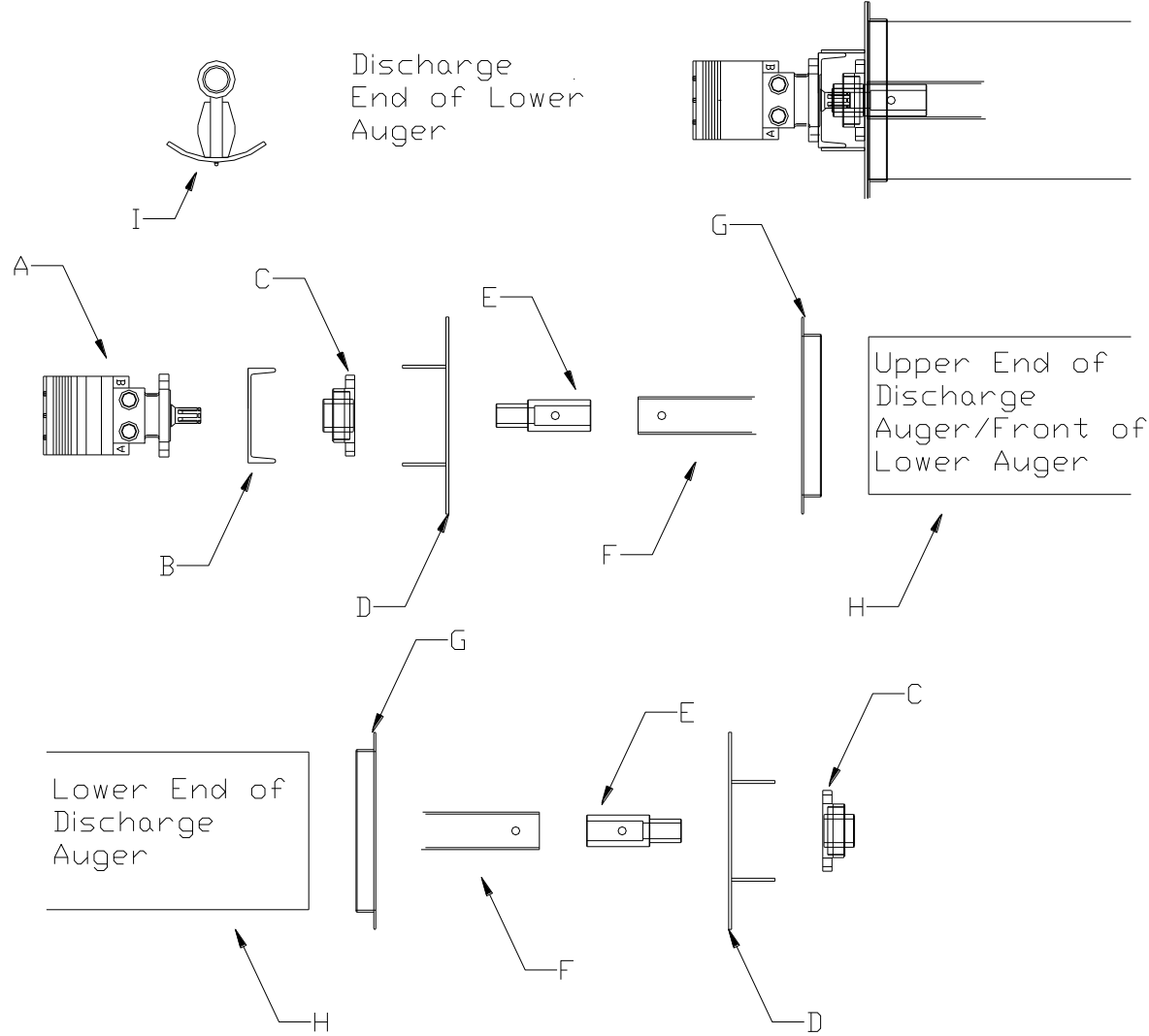
## Discharge Auger Assembly



### Complete Auger Assembly Parts List

| Ref. | Part Number | Description              | Qty. |
|------|-------------|--------------------------|------|
| A    | 900-5-201   | Complete Discharge Auger | 1    |
| B    | 900-5-202   | Discharge Auger (only)   | 1    |

**Auger Assembly Breakdown**

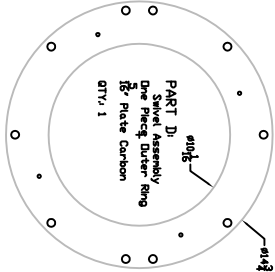
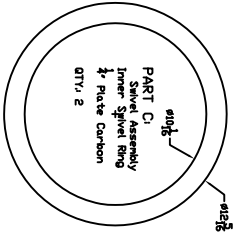
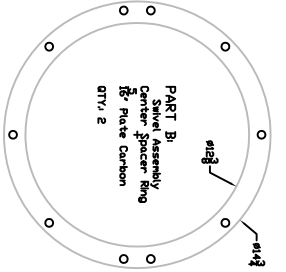
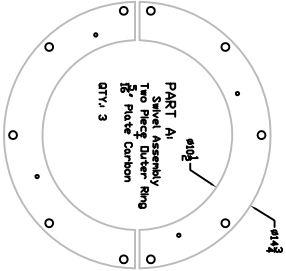
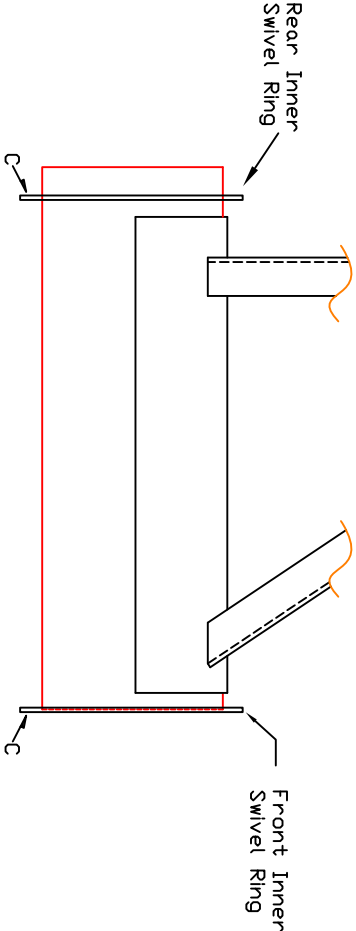
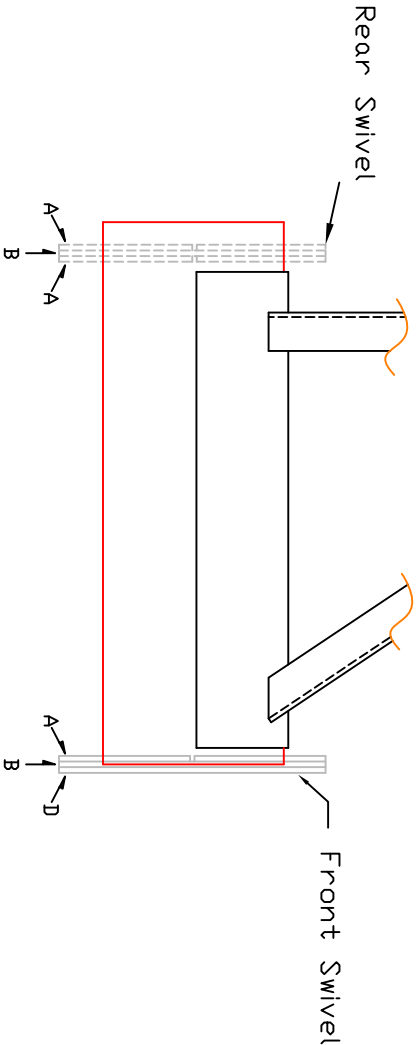


## Auger Parts List

| Ref. | Part Number | Description                                       | Qty. |
|------|-------------|---|------|
| A    | 400-R-103   | Torque Motor - Discharge Auger                    | 1    |
| *    | 400-R-107A  | Torque Motor - Lower Auger                        | 1    |
| B    | 900-1-127   | Motor Mount                                       | 2    |
| C    | UCF-208-24  | UCF-208-24 1-1/2" Flange Bearing                  | 4    |
| *    | 900-1-128   | 1-1/2" Bearing Gasket                             | 1    |
| D    | 900-1-116   | 10" End Cap                                       | 1    |
| E    | 900-1-111   | Spline Sleeve - 2"                                | 1    |
| F    | 900-1-130   | Auger Stub Shaft – At Lower End of Discharge Tube | 1    |
| G    | 900-1-133   | Angle Ring -10" 304 Stainless                     | 3    |
| H    | 900-1-109A  | 10" - 304 Stainless Auger Tube                    | 29'  |
| I    | 900-1-131   | Hanger Bearing (New Style)                        | 1    |
| *    | 900-1-119   | 9" Flights - 10 Ga 304 Stainless                  | 28   |
| *    | 900-1-119A  | 9" Flights - 7 Ga 304 Stainless                   | 4    |
| **   | 900-1-121   | 10" End Cap, Motor Mount Complete, 1-1/2" Bearing | 1    |

\* Not Shown

Side Unload Swivel Assembly  
(Center-Pivot Design)



# **Section 4**

# **Operation & Maintenance**

## **Basic Operation of Chandler Side Discharge Multi-Hopper Trailer Tender**

### **Basic Start Up:**

#### **1) Start Engine**

- A) Refer to engine manufactures manual for proper starting/operating procedures.

#### **2) Adjusting Discharge Auger Height**

- A) Slightly raise auger from rest
- B) Completely swing out auger
- C) Using the Raise and Lower valve adjust discharge auger to desired height.

#### **3) Starting Discharge Auger**

- A) Start auger by moving the lever on the Discharge Auger Valve to the ON position.

#### **4) Starting Lower Auger**

- A) Start auger by moving the lever on the Lower Auger Valve to the ON position.

#### **5) Setting Engine Speed**

- A) Using Engine Throttle Control set engine to 2600 RPM

#### **6) Starting Flow of Material**

- A) After following steps 1 – 5 open the gate of the compartment you wish to unload half way using the proper gate valve.
- B) After opening gate, adjust auger/engine speed if necessary, and then fully open the gate.

#### **7) Stopping Side Discharge Auger Tender**

(After unloading desired amount of material or compartment is empty)

- A) Close compartment gate.
- B) Turn off lower auger.
- C) Turn off discharge auger.
- D) Lower discharge auger.
- E) Swing in auger.
- F) Lower to auger rest.
- G) Shut-off engine.

**Caution: Never load unit with gates open**

## **Maintenance**

We are pleased you selected our equipment. We feel, as we are sure you do, that equipment must be maintained properly and made to last as long as possible. Outlined below are areas to be properly maintained.

### **1) Gates:**

The gates and gate slides are manufactured from type 304 stainless steel. The only maintenance required should be occasionally cleaning the slides.

### **2) Auger:**

Frequent cleaning of auger and auger tube is advisable.

### **3) Bearings:**

Although Chandler tenders come with factory pre-greased bearings, we recommend that you grease all bearings before using your tender.

#### **Do Not over grease bearings**

Only one shot of grease per day.

Over greasing bearings will shorten the life of the bearings.

### **4) Hydraulic System:**

**Hydraulic filters should be changed every 120-200 hours or Every four months.**

Chandler tenders come with 10-micron filters.

Use of filters not meeting these specifications could damage hydraulic components and void warranty.

#### **Hydraulic Oil**

Kendall Four Seasons

ISO VG 46

SAE 15W

**Hydraulic Oil Level – Chandler tenders come with oil level sight gauge.**

Oil level should be to the top line on the gauge. Never let oil level get less than half way down on sight gauge

### **5) Deutz Diesel Engine:**

Check engine oil daily, service according to engine manual. Use only Low Sulfur Diesel, on-road diesel.

**This page is left blank intentionally.**



# **Section 5**

# **Behnke Trailer Maintenance**

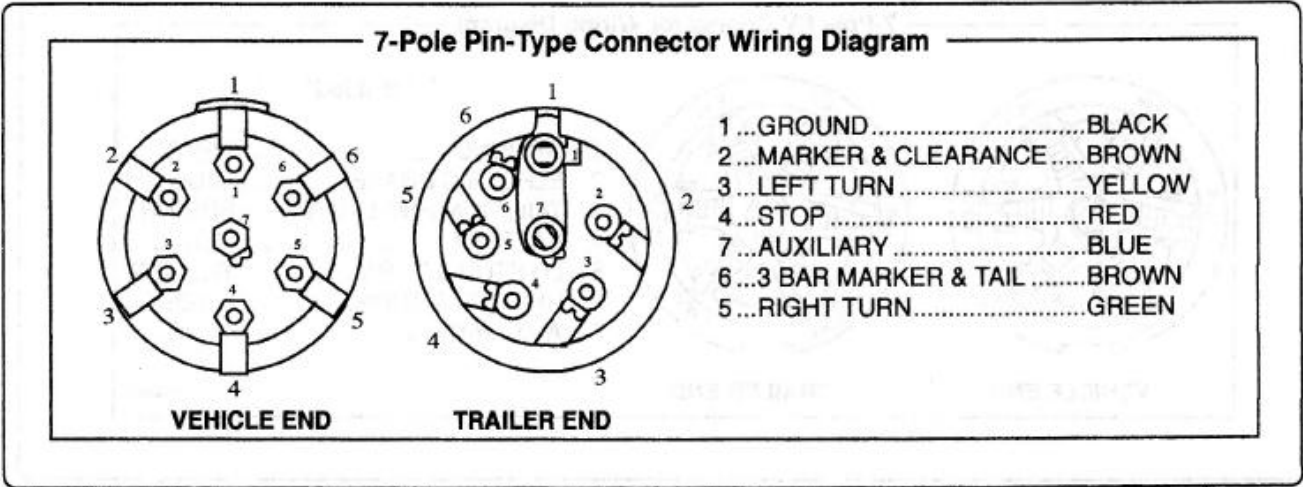
# ***Maintenance Schedule***

It is important that you maintain your trailer for maximum performance.  
We suggest the following as a guideline.

|                              |  |
|------------------------------|--|
| <b>Lugnuts</b>               | <i>Check lugnuts every 50 and 200 miles as loosening may occur.</i>      |
| <b>Hubs</b>                  | <i>Re-grease and adjust bearings once a year.</i>                        |
| <b>Brakes &amp; Bearings</b> | <i>Inspect once a year or every 12,000 miles, whichever comes first.</i> |



# Trailer Wiring Pin Out Diagram



**Note:** Locate wires by function only. Color coding is not standard among all manufacturers.

wire page 09/25/03

## 7-POLE SEMI STYLE

# Trailer Component Manuals

For operation and maintenance manuals of the following components:

- **AXN Heavy Duty Trailer Axles**
- **Hutch 7700/9700 Spring Suspension**
- **Haldex ABS Controller**
- **Deutz D2011L04i**

Please visit [www.chandlerspreaders.com](http://www.chandlerspreaders.com) Click the “Product Info” Tab, then select “Product Manuals”, and look under the “Fertilizer Tenders” section.