

# CHANDLER

## TRUCK-MOUNTED FERTILIZER AND LIME SPREADER



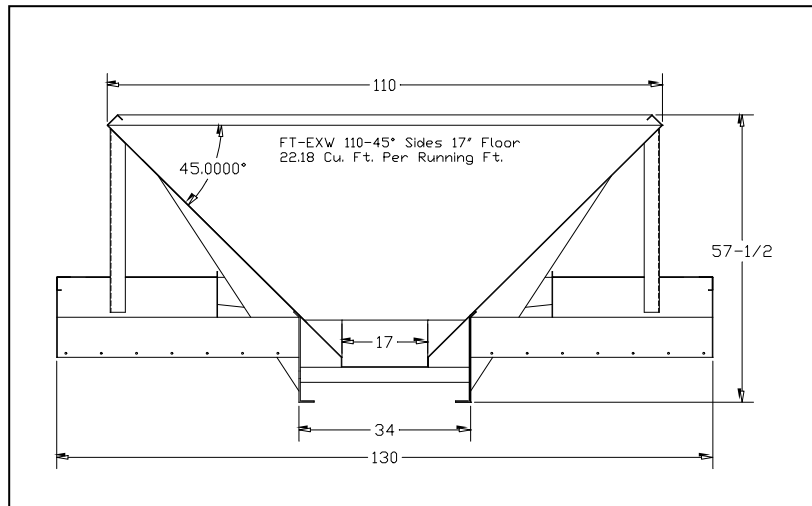
**C**handler Equipment Co.

Gainesville, Georgia 30503

Toll Free 1-800-243-3319

[www.chandlerequipment.net](http://www.chandlerequipment.net)

# CHANDLER FT - EXW HOPPER

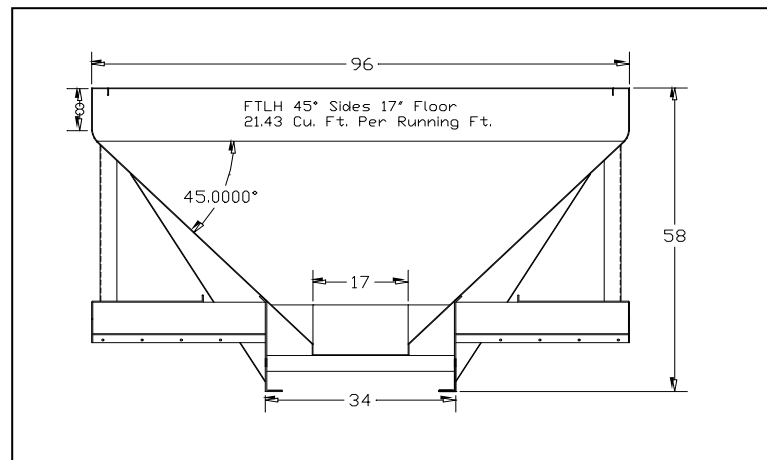


*Full Float  
Catwalks  
130" Wide*

Available in 10 ft., 11 ft., 12 ft. & 13 ft. Lengths

	<u>10' Unit</u>	<u>11' Unit</u>	<u>12' Unit</u>	<u>13' Unit</u>
<u>Hopper Capacity (struck level)</u> .....	221 Cu. Ft.	244 Cu. Ft.	266 Cu. Ft.	288 Cu. Ft.
<u>Payload (struck level) @ 65# Material</u> ....	14365 Lbs.	15860 Lbs.	17290 Lbs.	18720 Lbs.
<u>Hopper Capacity (Heaped, Tarped)</u> .....	251 Cu. Ft.	276 Cu Ft.	301 Cu Ft.	326 Cu Ft.
<u>Payload (Heaped) @ 65# Material</u> .....	16315 Lbs.	17940 Lbs.	19565 Lbs.	21190 Lbs.

# CHANDLER "FTLH" HOPPER

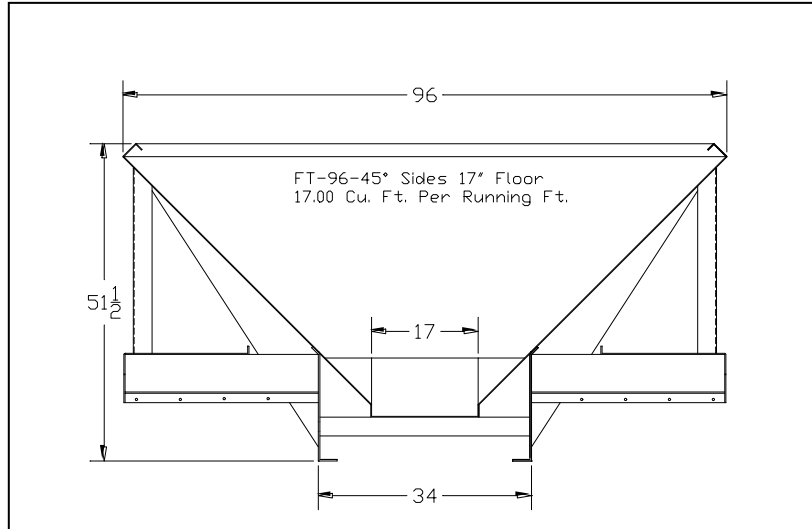


*Standard Catwalks  
102" Wide  
Also available in  
130" wide for  
Full Float*

Available in 10 ft., 11 ft., 12 ft., 13 ft., 14 ft. & 15 ft. Lengths

	<u>10' Unit</u>	<u>11' Unit</u>	<u>12' Unit</u>	<u>13' Unit</u>	<u>14' Unit</u>	<u>15' Unit</u>
<u>Hopper Capacity (struck level)</u> .....	212 Cu. Ft.	233 Cu. Ft.	255 Cu. Ft.	276 Cu. Ft.	298 Cu Ft.	320 Cu Ft.
<u>Payload (struck level) @ 65# Material</u> ....	13780 Lbs.	15145 Lbs.	16575 Lbs.	17940 Lbs.	19370 Lbs.	20800 Lbs.
<u>Hopper Capacity (Heaped)</u> .....	245 Cu. Ft.	269 Cu Ft.	295 Cu Ft.	319 Cu Ft.	346 Cu Ft.	370 Cu Ft.
<u>Payload (Heaped) @ 65# Material</u> .....	15925 Lbs.	17485 Lbs.	19175 Lbs.	20735 Lbs	22490 Lbs.	24050 Lbs.

# CHANDLER "FT" HOPPER



**Catwalks Available  
in widths of  
96" & 102"**

Available in 11 ft., 12 ft., 13 ft., 14 ft. & 15 ft. Lengths

	<u>11' Unit</u>	<u>12' Unit</u>	<u>13' Unit</u>	<u>14' Unit</u>	<u>15' Unit</u>
Hopper Capacity (struck level) .....	185 Cu. Ft.	202 Cu. Ft.	219 Cu. Ft.	236 Cu. Ft.	254 Cu. Ft.
Payload (struck level) @ 65# Material .....	12000 Lbs.	13130 Lbs.	14235 Lbs.	15340 Lbs.	16510 Lbs.
Hopper Capacity (Heaped) .....	220 Cu Ft.	241 Cu Ft.	261 Cu Ft.	282 Cu Ft.	303 Cu Ft.
Payload (Heaped) @ 65# Material .....	14300 Lbs.	15665 Lbs.	16965 Lbs.	18330 Lbs.	19700 Lbs.

**Hopper Construction:** Available in three types of material

- 1) Mild Steel with 304 Stainless Steel at critical corrosion points.
- 2) 409 Stainless Steel (corrosion resistant stainless but has to be painted)
- 3) 304 Stainless Steel (top of the line in spreader manufacturing)

Available in 45, 52 or 60 Degree Slope on Sides

(drawings shown with 45 degree slope sides, width will vary depending on degree of slope)

**Conveyor Specs:** Available in three types.

- 1) 1" x 1" Mesh Type, Heavy Duty Type 304 Stainless Steel – Available in 16", 18", 20" & 24" Widths.
- 2) Bar Type Chain
- 3) Belt Over – Bar type Chain

**Spinner Specifications:**

- 1) Twin "Dish Type" Spinners, 24" diameter with 6 blades per spinner especially Engineered for extremely accurate spread patterns. Mild Steel Construction, Also available in 304 Stainless Steel.
- 2) High Pressure spinner motors mounted over-head to keeps motors out of fertilizer and other contaminants for longer life.
- 3) Material Divider specially engineered "Screw Type" adjustable material divider for proper material placement on spinners to insure uniform spread patterns at all application rate and spread widths from 30' – 40' Lime , 50' – 60' Fertilizer with standard spinner system.
- 4) **Optional: Spread-Master Technology** - four blade configuration spinners and a specially designed flow divider for wide swath applications. (60' Lime – 80' Fertilizer)



*Spread pattern from 50' – 50' on  
Fertilizer and 30' – 45' Lime*

*Application rates from 60 pounds  
per acre on fertilizer to over six  
tons per acre on lime.  
(depending on chain width)*



*All Chandler Spreaders can  
be equipped with variable  
rate controls from  
Raven Industries*

**C**handler Equipment Co.

Gainesville, Georgia 30503

Toll Free 1-800-243-3319

[www.chandlerequipment.net](http://www.chandlerequipment.net)