

Model PT – 6 FSS

Pull Type Fertilizer and Lime Spreader



- 2 – Ton Capacity
- Dual 24” Dish Type Spinners
- PTO Drive Spinners
- Hydraulic Cylinder Engagement on Press Wheel
- 14L x 16.1 Tires
- 16” Chain – Fertilizer and Lime

Available in:

- 409 - Stainless Steel
- 304 - Stainless Steel

Designed for Small Fields, Turf and Food Plots

Options:

- 13.5 x 16.1 AWT Tires with 8 Bolt Hub
- Hydraulic Spinners – Plug to Tractor
- Stainless Steel Spinner Assembly
- Variable Rate Capability

RAVEN

PLATINUM PARTNER

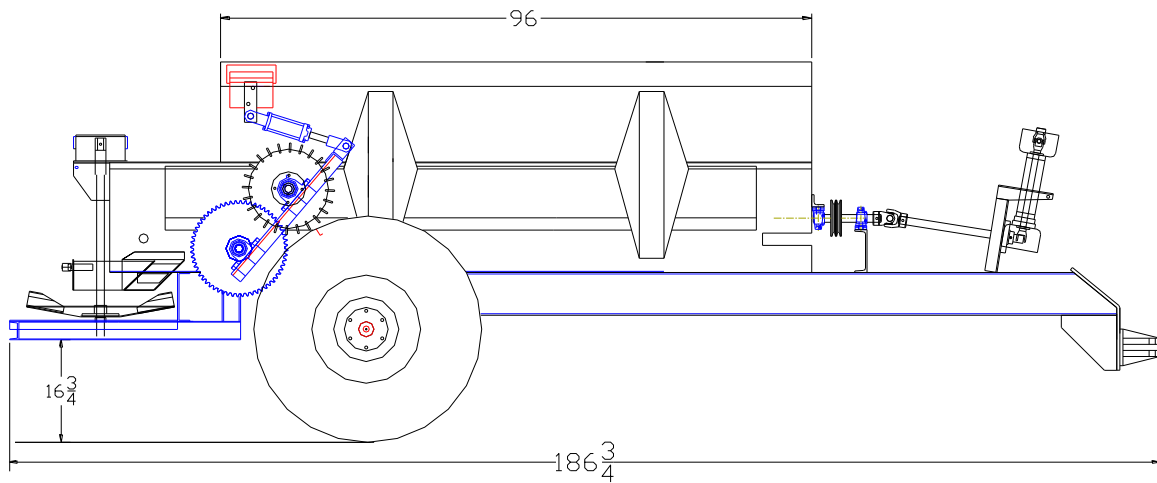


Chandler Equipment Co.

Gainesville, Georgia 30503

Toll Free 1-800-243-3319

www.chandlerequipment.net



“Frame & Suspension”

Axle: Single rigid axle, 7,000 # with 6 bolt hubs and spindles

Frame: Heavy Duty 7” Channel, with heavy duty adjustable hitch and 7,000 # jack

“Conveyor Specifications”

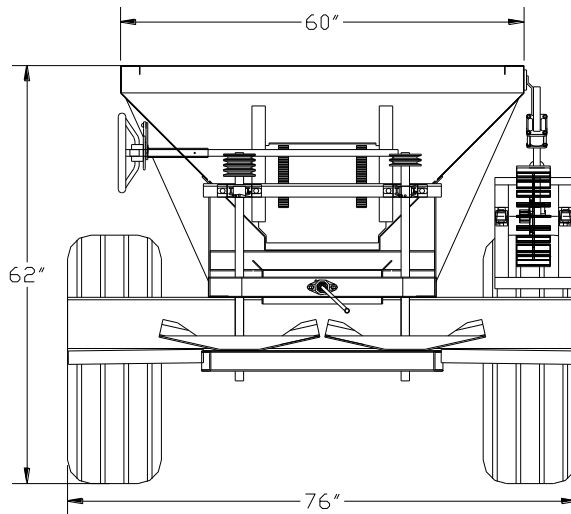
Conveyor Type: 1” x 1” Heavy Duty type 304 stainless steel 16” – wide (fertilizer and lime)

Conveyor Drive: Conveyor is press wheel driven with a Steel Cleated Wheel.

**Conveyor Rates: Fertilizer 80# to 600# Per Acre
Lime up to 1 ½” Per Acre**

“Spinner Specifications”

Spinner Design: Twin “Dished Type” spinners, 24” diameter with 6 blades per spinner, specially designed for extremely accurate broadcasting of materials.



**Optional
Banding Attachment to Divert Material**

C handler Equipment Co.

Gainesville, Georgia 30503

Toll Free 1-800-243-3319

www.chandlerequipment.net