

**Model 10 PTT-FT &
20 PTT-FT
Fertilizer and Lime Spreader
SERIAL # _____
WORK ORDER # _____**

Table of Contents

Chandler Equipment Co. Personnel.....	Page 1
Warranty Information.....	Page 2 – Page 4
Raven Industries Warranty.....	Page 5

Safety

Safety Labels	Page S-1
Safety Precautions	Page S-2
Safety Decals	Page S-3
Safety Decals	Page S-4
Safety Decals	Page S-5
Safety Decals	Page S-6
Safety Decals	Page S-7

PTO Shaft Adjustment and Maintenance

How to Shorten the PTO Shaft	Page P-1
Proper Lubrication	Page P-2

Section 1 Basic Information

10 PTT - FT Height and Length	Page 1-1
10 PTT - FT Capacity	Page 1-2
20 PTT - FT Height and Length	Page 1-3
20 PTT - FT Capacity	Page 1-4

Section 2 PTO Drive Spinners

PTO Drive Spinners - Parts Breakdown	Page 2-1
PTO Drive Spinners - Parts List	Page 2-2

PTO Drive Spinners - Parts List	Page 2-3
Press Wheel Drive - PTO Drive Spinners	Page 2-4
Press Wheel Drive - PTO Drive Spinners - Parts List	Page 2-5
Press Wheel Drive - PTO Drive Spinners - Parts List	Page 2-6
Hydraulic Cylinder Engagement Assembly & Parts List	Page 2-7
Section 3 Hydraulic Spinners with Press Wheel Drive	
Hydraulic Spinners - Plug to Tractor	Page 3-1
Hydraulic Spinners - Plug to Tractor - Parts List	Page 3-2
Press Wheel Drive - Hydraulic Spinners	Page 3-3
Press Wheel Drive - Hydraulic Spinners - Parts List	Page 3-4
Press Wheel Drive - Hydraulic Spinners - Parts List	Page 3-5
Hydraulic Cylinder Engagement Assembly & Parts List	Page 3-6
Section 4 Hydraulic Spinners Assembly	
Hydraulic Spinners - Parts Breakdown	Page 4-1
Hydraulic Spinners - Parts List	Page 4-2
Spinner Motor - M-30-2	Page 4-3
Flow Control Valve	Page 4-4
Flow Control Valve - Breakdown	Page 4-5
Checking Hydraulic Pressure	Page 4-6
Warning!	Page 4-7

Hooking up Hydraulic Spinner to Tractor Remotes	Page 4-8
Checking Spinner Rotation	Page 4-9
Setting Spinner Speed	Page 4-10
Section 5 Self Contained Hydraulic with Press Wheel	
Self Contained Hydraulic w/ Press Wheel - Hydraulic Diagram	Page 5-1
Self Contained Hydraulic w/ Press Wheel - Hydraulic Parts List	Page 5-2
Hydraulic Filter	Page 5-3
Checking Hydraulic Pressure	Page 5-4
Section 6 Axles & Tires	
8 Bolt Hub Assembly - Exploded View	Page 6-1
8 Hub Assembly - Parts List	Page 6-2
10 Bolt Hub Assembly - Exploded View	Page 6-3
10 Hub Assembly - Parts List	Page 6-4
Torque Rating & Tire Specs	Page 6-5
Section 7 Basic Set-Up and Operation	
Basic Operation of a Pull Type Spreader	Page 7-1
Setting Spinner Speed - Hydraulic Spinners Only	Page 7-2
Setting Flow Divider	Page 7-3
Spinner Assembly Side View	Page 7-4
Rate Chart – 16” Mesh Chain	Page 7-5

Rate Chart – 20” Mesh Chain	Page 7-6
Rate Chart – 24” Mesh Chain	Page 7-7
Section 8 Plug to Tractor Hydraulics for Rate Control System	
Plug to Tractor Hydraulics - Hydraulic Diagram	Page 8-1
Plug to Tractor Hydraulics - Parts List	Page 8-2
Warning!	Page 8-3
Section 9 Self Contained Hydraulics for Rate Control System	
Self Contained Hydraulics - Hydraulic Diagram	Page 9-1
Self Contained Hydraulics - Parts List	Page 9-2
Hydraulic Pump - Breakdown	Page 9-3
Hydraulic Pump - Parts List	Page 9-4
Hydraulic Filter	Page 9-5
Checking Hydraulic Pressure	Page 9-6
Section 10 Hydraulic Conveyor Drive	
Conveyor Assembly - Parts Breakdown	Page 10-1
Conveyor Assembly - Parts List	Page 10-2
Rawson Single Motor Gear Case - Parts Breakdown	Page 10-3
Rawson Single Motor Gear Case - Parts List	Page 10-4
Rawson Single Motor Gear Case w/ Sensor Port - Parts Breakdown	Page 10-5
Rawson Single Motor Gear Case w/ Sensor Port - Parts List	Page 10-6
Rawson Tandem Motor Gear Case - Parts Breakdown	Page 10-7

Rawson Tandem Motor Gear Case - Parts List	Page 10-8
Rawson Tandem Motor Gear Case w/ Sensor Port - Parts Breakdown	Page 10-9
Rawson Tandem Motor Gear Case w/ Sensor Port - Parts List	Page 10-10
Hydraulic Filter	Page 10-11
Conveyor Motor	Page 10-12
Section 11 Basic Set-Up and Operation	
Basic Operation of a Pull Type Spreader	Page 11-1
Setting Spinner Speed - Hydraulic Spinners Only	Page 11-2
Setting Flow Divider	Page 11-3
Spinner Assembly Side View	Page 11-4
Section 12 Flow Divider Assembly	
Flow Divider - Parts Breakdown	Page 12-1
Flow Divider - Parts List	Page 12-2
Section 13 Maintenance and Troubleshooting	
Proper Maintenance	Page 13-1
Proper Maintenance	Page 13-2
Troubleshooting Procedures	Page 13-3
Troubleshooting Procedures	Page 13-4
Troubleshooting Procedures	Page 13-5
Section 14 Spread Pattern Adjustment	

Spread Pattern Adjustment	Page 14-1
Spread Pattern Adjustment - Spinners and Flow Divider	Page 14-2
Spread Pattern Adjustment - Preparation and Procedure	Page 14-3
Spread Pattern Adjustment - Data Recording	Page 14-4
Spread Pattern Adjustment - Data Recording	Page 14-5
Spread Pattern Adjustment - Data Recording and Driving Methods	Page 14-6
Acceptable Spread Patterns	Page 14-7
Spread Pattern Adjustment - Troubleshooting	Page 14-8
Spread Pattern Adjustment - Notes	Page 14-9
Spreader Constants - 16" Mesh Chain	Page 14-10
Spreader Constants - 20" Mesh Chain	Page 14-11
Spreader Constants - 24" Mesh Chain	Page 14-12
Spreader Constants - Caution	Page 14-13

Chandler Equipment Company Personnel

Bill Chandler	Chief Executive Officer Advertising & Marketing Dealer / Distributor Arrangements
Brannon Chandler	General Manager Production & Scheduling Warranty, Sales and Service
Andrea Thompson	Administrative Assistant
Lisa Johnson	Accounts Receivable Collections
Michael Sosebee	Sales Manager
Gene Dye	Outside Sales Mid-South Regional Sales Manager
Dan McCorvey	Outside Sales Southeast Regional Sales Manager
Richard Wray	Outside Sales Western Regional Sales Manager
Matt Farmer	Inside Sales
Michael Anderson	Precision Ag Products Equipment Service
Wes Hobgood	Parts & Service
Kimbro Grizzle	Parts & Service

Warranty Policy

A) Standard Warranty:

Chandler Equipment Company warrants that equipment manufactured by Chandler Equipment Company, under normal conditions of use and service, shall be free from material defects due to faulty manufacturing for the period listed below.

- a. Poultry Litter Spreaders and Conveyors – Six (6) Months
- b. Fertilizer and Lime Pull Type Spreader – Six (6) Months
- c. Fertilizer Tenders (Trailer or Truck Mounted) – Six (6) Months
- d. Fertilizer and Lime Chassis Mounted Spreaders – One (1) Year

This warranty period is from the date of delivery to the original owner.

(Warranty period is on equipment built after July 1, 2012)

B) Warranty Approval:

- a. Any and All warranty claims must be approved in writing by Chandler Equipment Company prior to any work being done.
- b. **ANY WORK DONE WITHOUT PRIOR WRITTEN APPROVAL WILL NOT BE COVERED UNDER WARRANTY AND THE CUSTOMER / DEALER WILL BE RESPONSIBLE FOR ALL COST.**

C) Warranty Claim Forms: (Dealer Only)

- a. Warranty claim form / forms will be supplied to Dealer upon request.
- b. Warranty claim forms are available in 2 part paper form or in an electronic format.
- c. All warranty claims must include serial number, date of purchase, customer name and date of sale to original owner. (See attached warranty claim instructions for guidelines on filling out warranty claim form)
- d. Improperly filed or misleading information on warranty claims shall result in warranty claim being denied.
- e. **ALL WARRANTY CLAIMS MUST BE FAXED TO (770) 535-1265.**

D) Labor and Repair Cost: (Dealers Only)

- a. Labor for any repairs must be approved prior to any work being done.
- b. Labor rate (per hour) will be determined by Chandler Equipment Company, See Chandler Labor Rate List.
- c. Also Chandler Equipment Company retains the right to adjust any and all warranty claims.

E) Dealer Responsibility:

- a. Dealer shall be first line in all communications with the customer.

- b. Dealer shall also maintain good and open communications between the customer and Chandler Equipment in order to resolve warranty issues.
- c. Dealer shall be responsible for informing the customer of operating procedures, safety precautions and normal maintenance to help avoid any warranty issues.
- d. Promptly inform Chandler Equipment of any possible warranty issues.
- e. Dealer is responsible for making every effort to resolve warranty issues in a timely manner.
- f. Notify Chandler Equipment on any possible non-warranty issues, such as any modification made to equipment.

F) Original Chandler Genuine Parts:

- a. Chandler Equipment Company will only warranty equipment that uses Chandler Genuine Parts. Any equipment that is sold by a dealer with parts other than Original Chandler Genuine parts shall Void Any and All warranties

G) Replacement Parts Shipping:

- a. Chandler Equipment Company shall send Chandler Genuine Parts for warranty replacement. Chandler Equipment shall NOT warranty any part or parts replaced by the Customer/Dealer that are not Chandler Genuine Parts.
- b. Cost of any part or parts that are replaced by the Customer / Dealer that are not Chandler Genuine Parts shall be the sole responsibility of the Customer / Dealer.
All replacement parts covered under warranty will be shipped via regular UPS. The cost of any parts shipped **UPS-Next Day Air** will be the sole responsibility of the Customer/Dealer.

H) Parts Returns:

- a. All parts replaced under warranty will be returned to Chandler Equipment Company within 20 days of replacement for warranty evaluation. All parts returned for warranty evaluation must be in its original state free of modifications. Any modifications will result in the warranty claim being denied and the part or parts returned back to the customer/dealer.
- b. Any hydraulic components returned must be assembled (in original state) and with the ports plugged to prevent any contamination. Any hydraulic component that has been disassembled will VOID the warranty claim and the part or parts returned back to the customer/dealer.
- c. All Returned Parts for warranty evaluation must be clearly tagged with the following information.
 - I. RMA number
 - II. Customer or Dealer Name, address, phone number and contact person
 - III. Equipment serial number
 - IV. Complete description of problem

I) Misuse or Improper Installation:

- a. Any equipment, parts, or components that have been damaged by improper installation or misuse will **NOT** be covered under this warranty.

- b. Chandler Equipment accepts no responsibility or liability of any kind due to improper installation of equipment or parts on any product manufactured by Chandler Equipment Company. This includes, but is not limited to, any damages to personal property, crops, or any other equipment.

J) Incomplete Equipment and Dealer Add-Ons:

- a. Chandler Equipment does not warrant any equipment sold **INCOMPLETE**. This includes (but is not limited to) axles, tires, any hydraulic components or paint.
- b. Any Non Genuine Chandler Parts that are installed as aftermarket add-ons by anyone not approved in writing by Chandler Equipment Company shall **VOID ALL WARRANTIES**.
- c. Chandler Equipment Company accepts no responsibility, nor shall warrant any equipment or any component that is damaged due to any type Control System not sold and installed by Chandler Equipment Company.

K) Items Not Covered Under this Warranty:

- a. Any equipment that has been modified from its original state.
- b. Any equipment used for any other purpose than what it was originally designed for.
- c. Any travel time, cleaning of equipment, unloading of material, or towing.
- d. Any cost of materials that have been applied improperly due to the lack of customer / dealer not following proper operating instructions.

Raven Industries

1 year standard warranty covers all defects in workmanship or materials on your Raven applied products under normal use.

All Raven Industries parts must be returned clean and free of any fluids.

It is recommended that the defective parts be returned to Chandler Spreaders, Inc. in the packaging that the replacements parts came in.

Warranty claims must be submitted to Chandler Equipment Company no later than 10-days after the repair date. The dealer must add the following information when filing a warranty claim on a Raven component.

- Spreader serial number.
- Part number and serial number of the defective part.
- Description of failure.
- Procedure to diagnose failure.

All Raven Industries parts returned to Chandler Spreaders, Inc. for warranty reimbursement will be submitted to Raven Industries for diagnostic testing. If the defective part is deemed a “No Failure” by Raven Industries the part will be returned to the customer, and the customer will be charged a \$108.00 diagnostic fee and any freight charges associated with the defective part.

All defective parts must be returned to Chandler Spreaders, Inc. within 15 days of failure. Customer will be invoiced for replacement parts until warranty credit is issued by Raven Industries to Chandler Spreaders, Inc. Customer will then be credited for the replacement parts at that time. If any part/parts are found to be defective by misuse or improper installation, customer will be responsible for all charges for replacement parts and any corresponding freight charges.

Fertilizer and Lime Spreader Safety

SAFETY LABELS

Your safety and the safety of those around you are very important to us here at Chandler Equipment Co. Therefore we have provided important safety labels throughout this manual.

A safety label alerts you of potential hazards that can injure you or others. Each safety label is preceded by a safety alert symbol  and either the words DANGER, WARNING, or CAUTION.



DANGER

**Failure to follow instructions WILL
Result in DEATH or SERIOUS INJURY**



WARNING

**Failure to follow instructions CAN result
In DEATH or SERIOUS INJURY**



CAUTION

**Failure to follow instructions CAN result
In INJURY**

Safety Precautions

- 1) Be sure all guards or other safety devices, and decals are in place and functioning properly.**
- 2) Stay away from moving parts when spreader is in operation.**
- 3) Check lug nuts daily.**
- 4) Maintain proper tire pressure, according tire manufacturers specifications.**
- 5) If spreader becomes clogged, turn off PTO/Hydraulics before entering hopper or cleaning the spreader.**
- 6) Be sure to fully empty hopper before transporting.**
- 7) Never exceed 25 mph (LOADED) on the highway.**

Safety Decals



WARNING!

- **DO NOT ADJUST UNTIL SPINNERS STOP MOVING**
- **STAY OUT OF BOX WHILE CONVEYOR IS IN MOTION**
- **DO NOT RIDE ON SPREADER WHILE VEHICLE IS IN MOTION**
- **STAY CLEAR OF SPINNERS WHILE SPINNERS ARE IN MOTION**

THINK SAFETY!

399141000/f



PTO SAFETY DECAL





LUG NUT DECAL

MAXIMUM LOADED SPEED



HYDRAULIC SYSTEM DECAL

WARNING

Failure to hookup Hydraulic Spinner Option properly may cause serious damage to Tractor or Spreader

Before hooking to tractor carefully read the operations and parts manual. If you are not certain of which system you have contact Chandler Equipment or your local dealer



WARNING!

Failure to hook up Hydraulic Spinner Option properly may Cause serious damage to Tractor Hydraulic System or Spreader

When hooking up Hydraulic Spinner Option use the following procedure.

Connect Pressure Hose to tractor remote using coupler marked for the Lower Position.



(Symbol indicates Lower Position)

This will turn the spinners in proper direction when lever is in the Lower position.
(PUSHED FORWARD)

If tractor is equipped with hydraulic motor return option (low pressure return circuit)
Connect Return Line here

Or

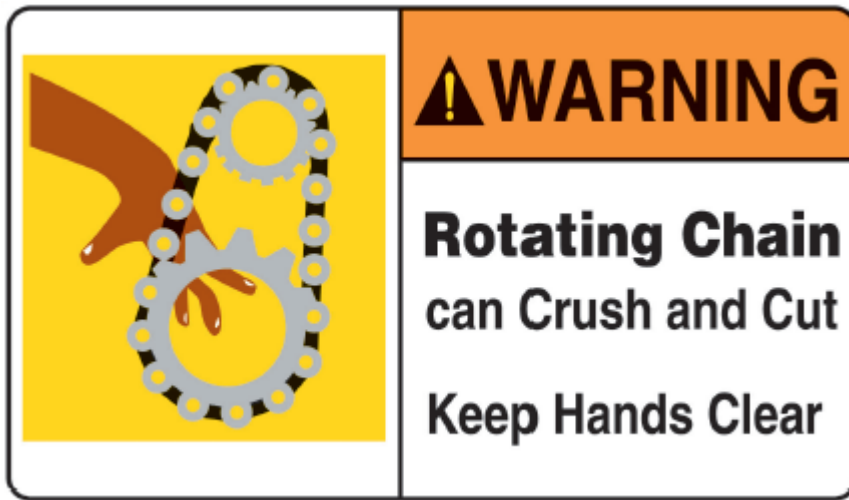
Connect Return Hose to tractor remote using coupler marked for the Raise Position.



When Disengaging Spinners push lever forward into FLOAT Position.
NEVER GO TO NEUTRAL TO TURN SPINNERS OFF.

Before hooking to tractor, carefully read operation and parts manual. If you are not certain whether your Hydraulic System is the Open Type or Close Type, Contact your local Dealer or Chandler Equipment

ROTATING CHAIN WARNING



ROTATING SPINNERS WARNING



PTO Shaft Adjustment And Maintenance



IMPORTANT

The following section contains important information regarding the safety and operation of PTO drive equipment. As our spreaders are sold throughout the world we install a standard length PTO shaft to accommodate multiple types and brands of tractors. Therefore, modification (i.e. shortening) of the shaft may be required to meet the specific needs of your tractor. Follow the guidelines set forth in this manual to ensure proper and safe operation of your spreader.

HOW TO SHORTEN THE PTO DRIVE SHAFT

- 1) Attach the implement to the draw bar. Align the implement with the tractor on level ground - this will be the position at which the driveline is at its shortest length. If the driveline will fit the tractor and implement at this point, without bottoming out, no further action is necessary.
- 2) If the driveline will not fit without bottoming out, separate the driveline into two half shafts. Mount the tractor half on the PTO, and mount the implement half on the power input connection (PIC).
- 3) Hold the two halves side-by-side. Mark the outer shield tube where it overlaps the end of the shield cone on the implement half shaft, plus 1/4".
- 4) Disassemble the shields from the half shafts.
- 5) Cut the outer shield tube at the mark made in (c). Using the cut piece as a guide, cut an equal amount from the inner shield tube, the outer drive tube, and the inner drive tube.
- 6) Using a half round or rat tailed file, carefully deburr the cut end of the drive tubes. Shake and/or wipe metal chips / filings from the drive tubes.
- 7) Coat the inner drive tube with #2 grease along its entire length.
- 8) Reassemble the shields onto each half shaft. Slide the inner half shaft into the outer.

- 9) **Attach the driveline to the tractor PTO and implement PIC. Make sure each end is firmly attached to its respective shaft.**
- 10) **Make sure driveline does not bottom out when the implement is fully raised, and that at least 1/3 of the tube is engaged when the implement is at its lowest height.**

LUBRICATION

- **Always wear adequate safety equipment when performing any maintenance**
- **LUBRICATION OF THE UNIVERSAL JOINT**
 - **Rotate the shielding until opening the access hole. Lubricate, and close the hole by rotating the shielding.**
- **LUBRICATION OF THE 650 CV JOINT**
 - **Rotate the shell to expose the grease fitting and inject grease.**
- **LUBRICATION OF THE TELESCOPING TUBES**
 - **If grease fittings are not provided, separate the two halves of the driveline and manually lubricate the telescoping tubes.**
- **Check that all components are in good condition and properly lubricated before using the driveline. Clean and re-lubricate the driveline before storage at the end of the season.**
 - **Lubrication the 650 type 70° CV joint every 8 hours.**
 - **Lubricate all other components every 50 hours.**
 - **Pump grease into the crosses until it purges from the bearing caps.**
 - **Inject grease gradually and avoid pumping the grease gun violently with resulting high delivery pressure.**
 - **Use NLGI grade 2 grease.**
 - **Before storage at the end of the season remove any grease that has accumulated inside the CV joint shield.**
- **Replace worn or damaged parts with genuine Bondioli & Pavesi spare parts.**
 - **Do not modify or tamper with any part of the driveline.**
 - **For any operations not explained in this manual, consult your implement dealer or manufacturer, or your local Bondioli & Pavesi representative.**

Section 1

Basic Information

10 PTT-FT



20PTT-FT



10 PTT-FT & 20PTT-FT Capacities

45° Sides

Hopper Capacity	Struck Level	Heaped
10 PTT-FT	156 Cubic Ft.	186 Cubic Ft.
20 PTT-FT	245 Cubic Ft.	275 Cubic Ft.

Payload	Fertilizer @ 65 #	Lime @ 90 #
10 PTT-FT	10,140 Lbs.	12,000 Lbs.
20 PTT-FT	15,925 Lbs.	16,000 Lbs.

52° Sides

Hopper Capacity	Struck Level	Heaped
10 PTT-FT	156 Cubic Ft.	181 Cubic Ft.
20 PTT-FT	228 Cubic Ft.	253 Cubic Ft.

Payload	Fertilizer @ 65 #	Lime @ 90 #
10 PTT-FT	10,140 Lbs.	12,000 Lbs.
20 PTT-FT	14,820 Lbs.	16,000 Lbs.



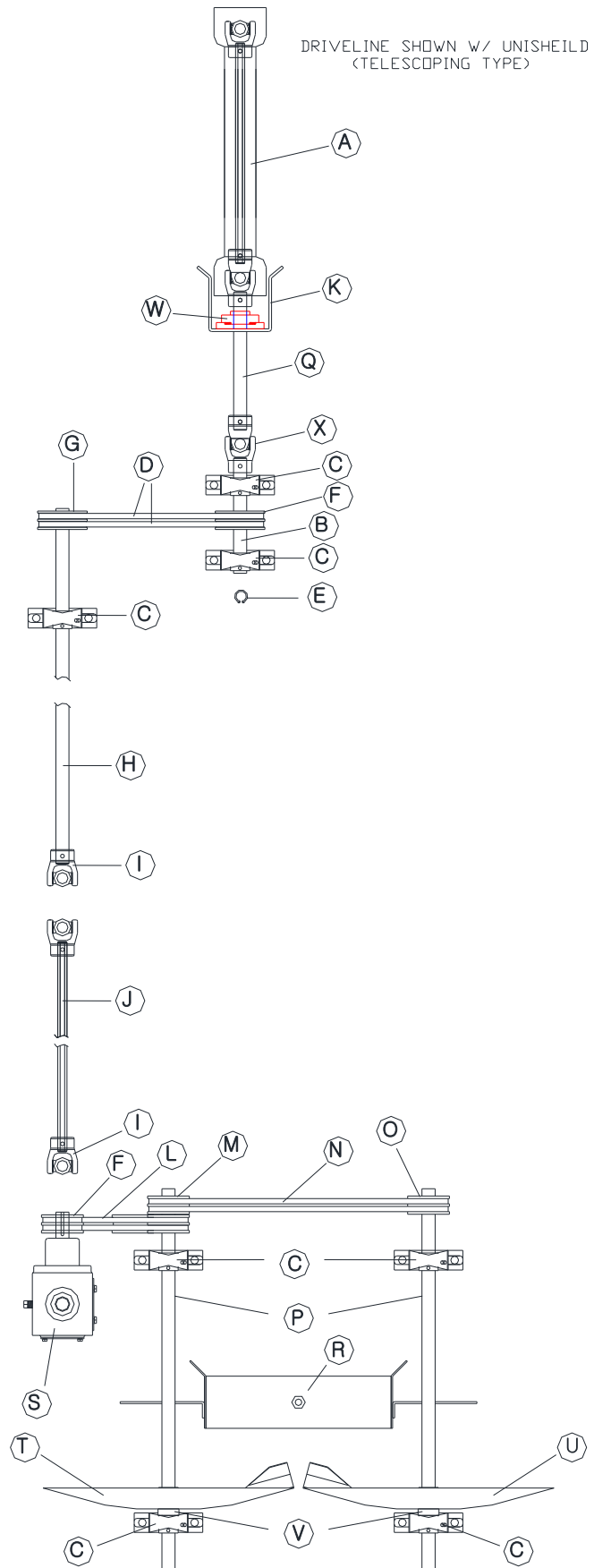
WARNING:

Never exceed the maximum HEAPED PAYLOAD of the spreader.

Section 2

PTO Drive Spinners

PTO DRIVEN SPINNERS BASIC PARTS ILLUSTRATION



PTO Drive Spinners Parts List

Ref.	Part Number	Description
A)	200-2-018A	48" PTO Telescoping Shaft
B)	300-FL-126	11" Shaft for Pulley
C)	UCP-207-20	1-1/4" Pillow Block Bearing
D)	1100-1-107	B-67 V-Belts (540 PTO)
*	1100-1-111	B-69 V-Belts (1000 PTO)
E)	PTF-13	Retaining Ring
F1)	1100-2-202	2 B - 5.6 SDS Pulley (540 PTO)
*	1100-2-215	1-1/4" SDS Bushing
*	1100-2-201	2 B - 4.4 SH Pulley (1000 PTO)
*	1100-2-214	1-1/4" SH Bushing
F2)	1100-2-202	2 B - 5.6 SDS Pulley (540 PTO)
*	1100-2-215	1-1/4" SDS Bushing
*	1100-2-197	2 B - 4.8 SDS Pulley (1000 PTO Top of Gear Box)
*	1100-2-215	1-1/4" SDS Bushing
G)	1100-2-204	2 B - 8.6 SK Pulley (540 PTO)
*	1100-2-216	1-1/4" SK Bushing
*	1100-2-199	2 B - 11.0 SK Pulley (1000 PTO)
*	1100-2-216	1-1/4" SK Bushing
H)	200-2-023	PTO Drive Line 1-1/4" Shaft (Specify Length)
I)	200-2-002	Universal Joint (7/8" Hex x 1-1/4" Round – 1/4" Key)
J)	200-2-015	7/8" Hex Shaft (Specify Length)
K)	300-C-026	Cradle Bonnet
*	300-C-027	Cradle Pin
L)	1100-1-102	B-39 V-Belts (540 PTO)
M)	1100-2-203	4 B - 4.4 Pulley
*	1100-2-213	1-1/4" SD Bushing
N)	1100-1-105	B-62 V-Belts (Standard Set-up)
O)	1100-2-201	2 B - 4.4 SH Pulley (Standard Set-up)
*	1100-2-214	1-1/4" SH Bushing
P)	300-1-207	PTO Drive Fan Shaft – 33" Long
Q)	300-FL-124	Cradle Shaft – 20-1/2" x 1-1/4"
R)	300-FT-010	Flow Divider S.S. (Specify Floor Width)
S)	PTF-71-2RZ	PTF Spinner Gear Case
T)	300-FL-101-L	24" Spinner Disc (Only) 7 Ga. Mild Steel (L.H.)

**	300-FL-102-L	24" Spinner Disc (Only) S.S. (L.H.)
U)	300-FL-101-R	24" Spinner Disc (Only) 7 Ga. Mild Steel (R.H.)
**	300-FL-102-R	24" Spinner Disc (Only) S.S. (R.H.)
V)	300-1-208	Spacer - Lock Collar for 1-1/4" Shaft
W)	UCF-207-20	1-1/4" 4 Bolt Flange Bearing
X)	200-1-199A	Universal Joint 1-1/4" R, 1/4" K
*	300-1-126	Front Belt Guard (540 PTO)
*	300-1-126	Front Belt Guard (1000 PTO)
*	300-1-127	Rear Belt Guard

*** Not Shown**

**** Optional**

PRESS WHEEL PARTS ILLUSTRATION W/ PTO SPINNERS



Press Wheel Drive – PTO Drive Spinners Parts List

Ref.	Part Number	Description
A	UCP-207-20	1-1/4" Pillow Block Bearing
A1	UCP-208-24	1-1/2" Pillow Block Bearing
B	300-FL-101-L	24" Spinner Disc (Only) 7 Ga. Mild Steel (L.H.)
**	300-FL-102-L	24" Spinner Disc (Only) S.S. (L.H.)
**	300-FL-101-R	24" Spinner Disc (Only) 7 Ga. Mild Steel (R.H.)
**	300-FL-102-R	24" Spinner Disc (Only) S.S. (R.H.)
C	300-FL-107-L	F/L Spinner Blade Mild Steel (L.H.)
**	300-FL-108-L	F/L Spinner Blade Heat Treated (L.H.)
**	300-FL-109-L	F/L Spinner Blade S.S. (L.H.)
**	300-FL-107-R	F/L Spinner Blade Mild Steel (R.H.)
**	300-FL-108-R	F/L Spinner Blade Heat Treated (R.H.)
**	300-FL-109-R	F/L Spinner Blade S.S. (R.H.)
D	300-FL-112	4 Bolt Fan Hub
*	300-FL-112A	4 Bolt Fan Hub Stainless Steel
E	300-1-207	Fan Shaft – 33"
F	UCF-208-24	1-1/2" 4 Bolt Flange Bearing
G	700-1-108	60 BS 26 X 1-1/4" Sprocket
H	700-1-111	60 BS 40 X 1-1/2" Sprocket
I	300-1-208	Fan Shaft Lock Collar
J	700-1-121	#60 Idler Sprockets
K	500-1-101	#60 Chain
**	500-1-102	#60 Chain Stainless Steel
L	700-1-115	60 BS 60 X 1-1/4" Sprocket
M	700-1-112	60 BS 45 X 1-1/4" Sprocket
N	700-1-103	60 BS 11 X 1-1/4" Sprocket
O	300-FT-002C	L-1 1/4" GW Shaft – 17"
P	300-FT-002A	S-1 1/4" GW Shaft – 15"
Q	800-1-107	20.5 x 8 x 10 Tire & Wheel
R	GWC-F-1634	Front Roller Assembly (16" Chain)
**	GWC-F-2034	Front Roller Assembly (20" Chain)
**	GWC-F-2434	Front Roller Assembly (24" Chain)
S	PTWC-16-565	Rear Roller Assemble (16" Chain)
**	PTWC-20-565	Rear Roller Assemble (20" Chain)
**	PTWC-24-565	Rear Roller Assemble (24" Chain)

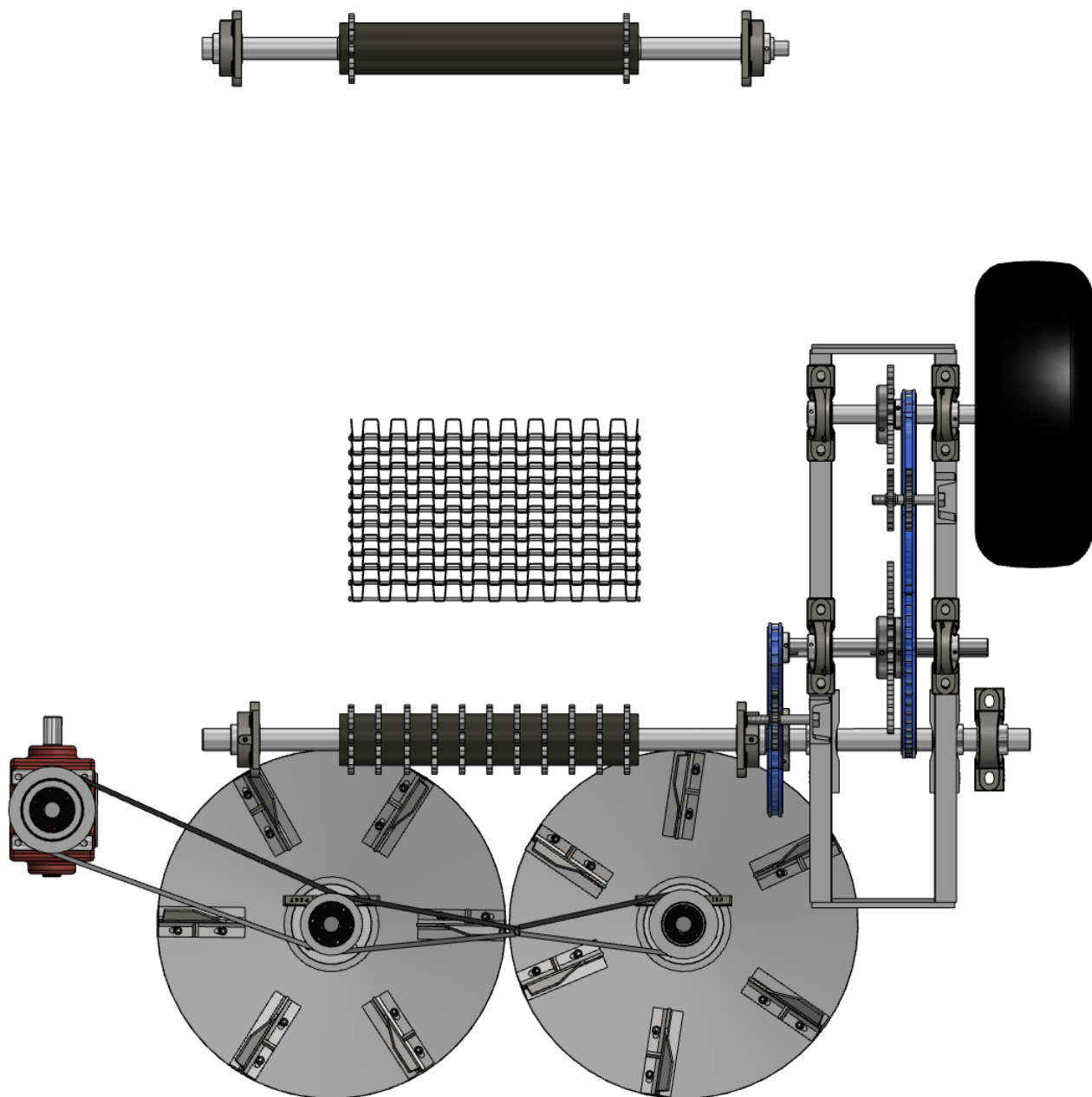
T	500-3-301	16" S.S. Mesh Chain
**	500-3-303	20" S.S. Mesh Chain
**	500-3-304	24" S.S. Mesh Chain
*	500-3-306	16" S.S. Connecting Pin
*	500-3-308	20" S.S. Connecting Pin
*	500-3-309	24" S.S. Connecting Pin
U	1100-2-201	2 B - 4.4 SH Pulley
*	1100-2-214	SH – 1-1/4" Bushing
V	1100-2-202	2 B - 5.6 SDS Pulley
*	1100-2-215	SDS – 1-1/4" Bushing
W	1100-1-105	B-62 V-Belt
X	1100-1-102	B-39 V-Belt
Y	PTF-71-2RZ	PTF Spinner Gear Case
Z	300-FT-005	Ground Wheel Frame (Standard or Narrow Track)
AA	1100-2-203	4 B - 4.4 SD Pulley
*	1100-2-213	SD – 1-1/4" Bushing
BB	300-FT-004	Ground Wheel Hub 5 Bolt

*** Not Shown**

**** Optional**

Press Wheel Drive-PTO Drive Spinners

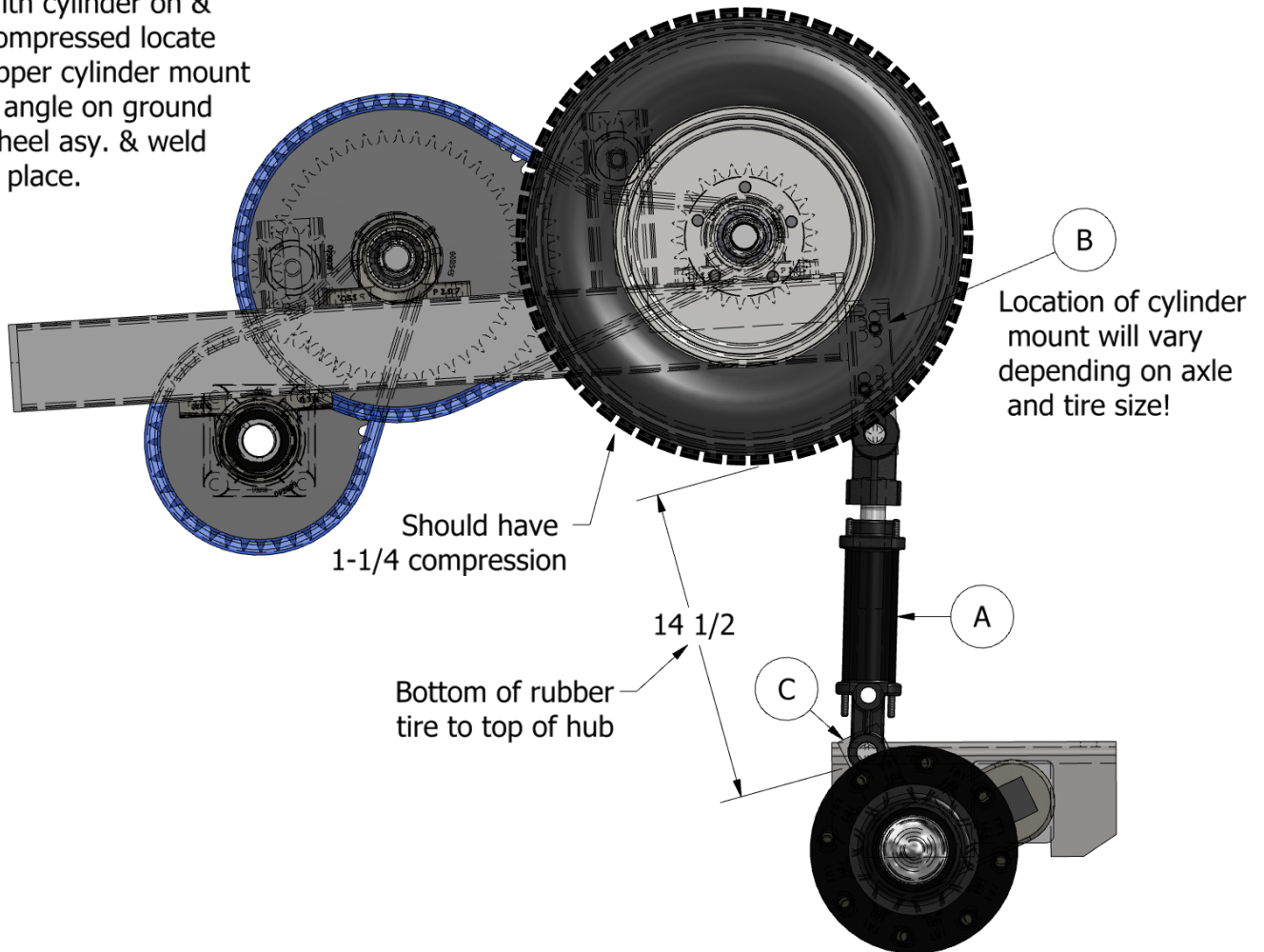
Completed Top View



Hydraulic Cylinder Engagement assembly

(View shown is for 16.5 tires)

With cylinder on &
Compressed locate
Upper cylinder mount
& angle on ground
wheel asy. & weld
in place.



Hydraulic Cylinder Engagement - Parts List

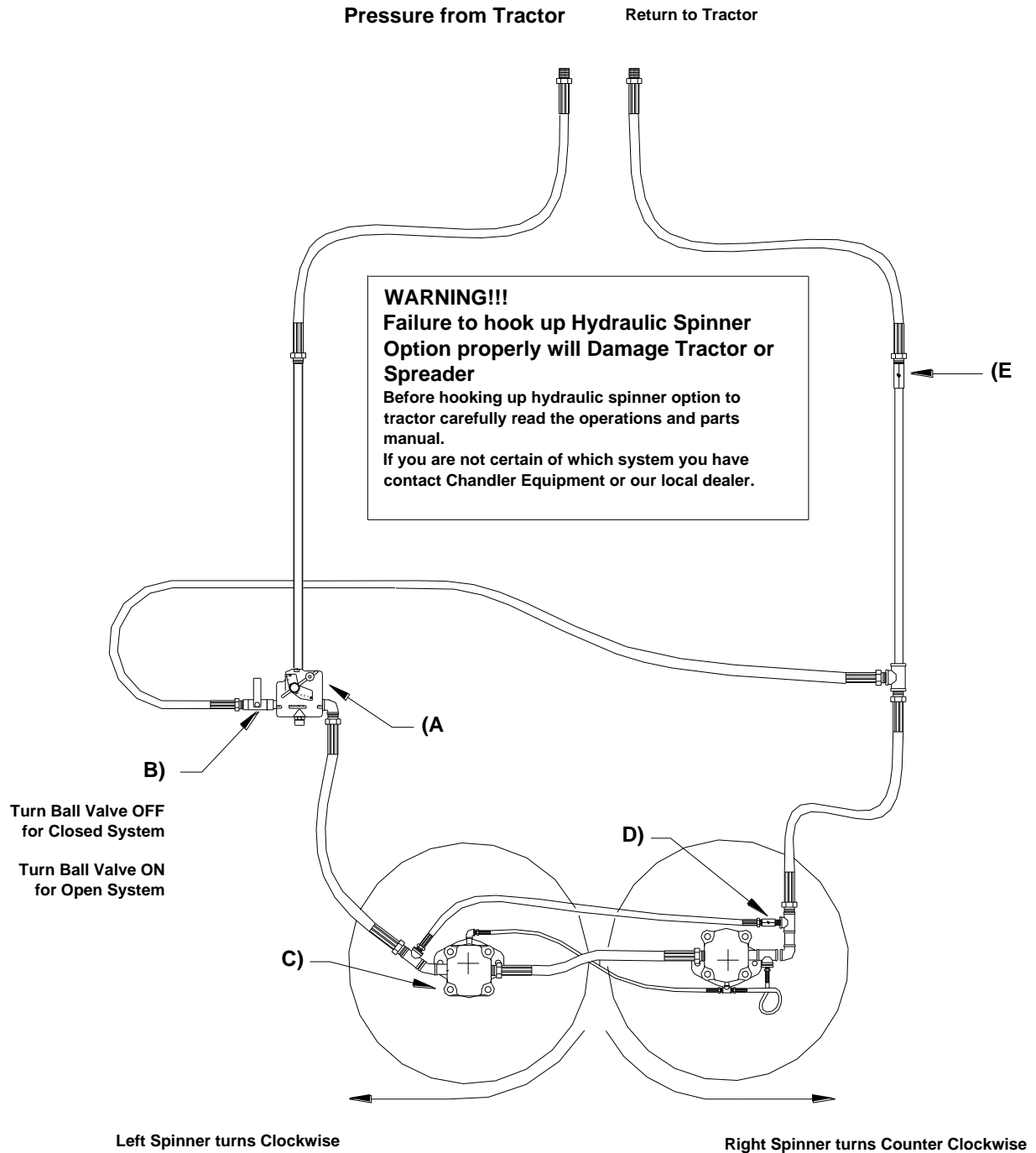
Ref.	Part Number	Description
A.	400-1-305	Hydraulic Cylinder-4"
B.	300-FT-048	Upper Cylinder Mount 6-5/8"
**	300-FT-049	Upper Cylinder Mount 10"
**	300-FT-050	Lower Cylinder Mount 8"
C.	300-FT-051	Lower Cylinder Mount 4"
**	300-FT-052	Lower Cylinder Mount 8"(bent)
**	300-FT-053	Lower Cylinder Mount 12"(bent)

** Option

Section 3

**Press Wheel for
Plug to Tractor
Hydraulic
Spinners**

10 & 20 PTT – FT Hydraulic Spinners – Plug to Tractor



Hydraulic Spinner Option Pull Type Fertilizer and Lime Spreader (units built after 05/01/2005)

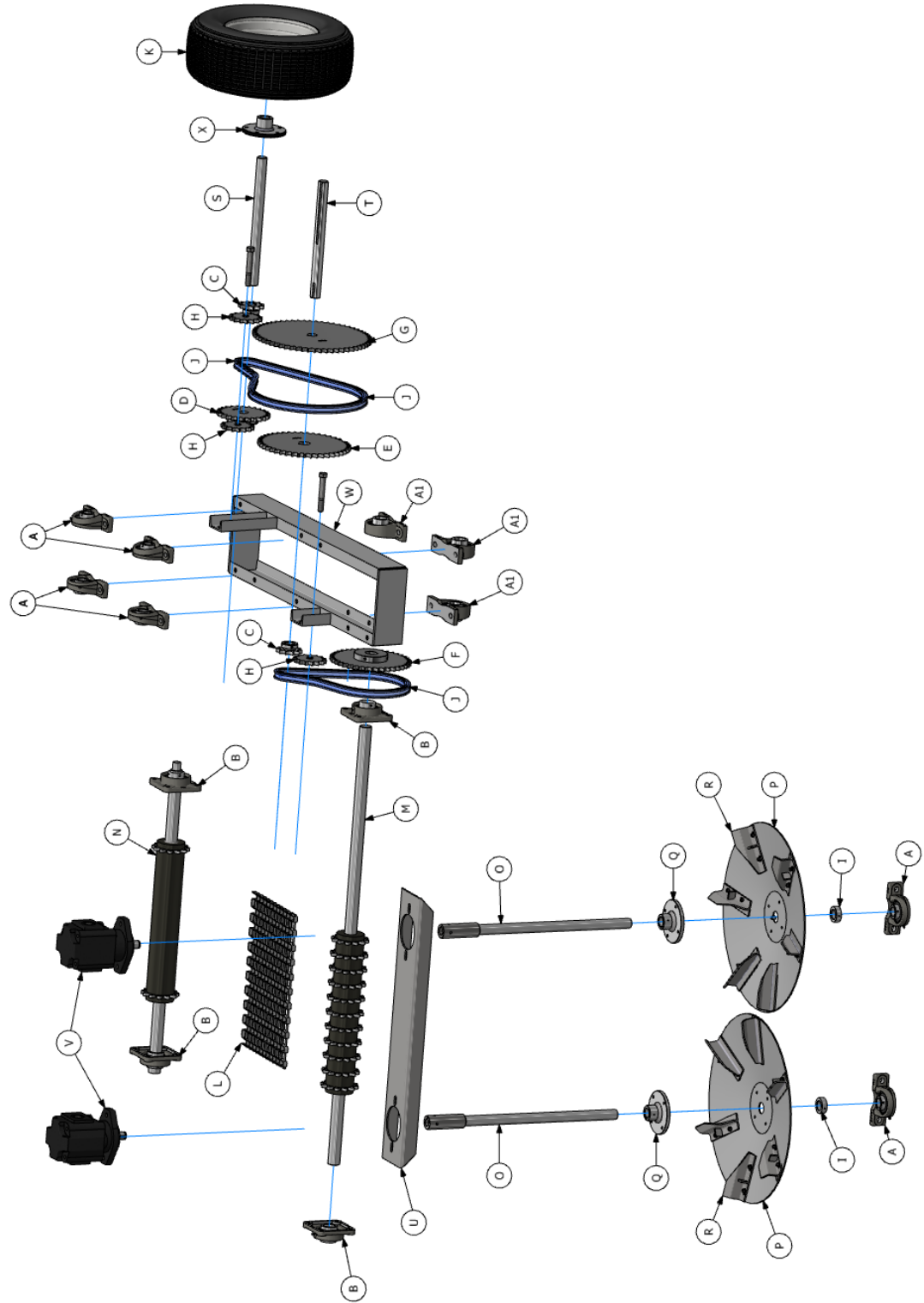
3 - 1

Hydraulic Spinners – Plug to Tractor Parts List

Part #	Description
A) 400-1-313	Flow Control Valve with Built-in Relief
B) 400-1-323	Ball Valve – ½” 3000psi
C) 400-C-201	M - 30 2" Gear Spinner Motor
D) 400-1-316	LT-50 Check Valve
E) 400-1-316A	HSP-1000-6-5 Check Valve

Press Wheel - Hydraulic Drive Spinners

Press Whwvl Parts Illustration w/ Hydraulic Spinners
6-8 Ton Set Up



Press Wheel Drive – Hydraulic Drive Spinners Parts List

Ref.	Part Number	Description
A	UCP-207-20	1-1/4" Pillow Block Bearing
A1	UCP-208-24	1-1/2" Pillow Block Bearing
B	UCF-208-24	1-1/2" 4 Bolt Flange Bearing
C	700-1-103	60 BS 11 X 1-1/4" Sprocket
D	700-1-108	60 BS 26 X 1-1/4" Sprocket
E	700-1-112	60 BS 45 X 1-1/4" Sprocket
F	700-1-111	60 BS 40 X 1-1/2" Sprocket
G	700-1-115	60 BS 60 X 1-1/4" Sprocket
H	700-1-121	#60 Idler Sprockets
I	300-1-208	Fan Shaft Lock Collar
J	500-1-101	#60 Chain
**	500-1-102	#60 Chain Stainless Steel
K	800-1-107	20.5 x 8 x 10 Tire & Wheel
L	500-3-301	16" S.S. Mesh Chain
**	500-3-303	20" S.S. Mesh Chain
**	500-3-304	24" S.S. Mesh Chain
*	500-3-306	16" S.S. Connecting Pin
*	500-3-308	20" S.S. Connecting Pin
*	500-3-309	24" S.S. Connecting Pin
M	PTWC-16-565	Rear Roller Assemble (16" Chain)
**	PTWC-20-565	Rear Roller Assemble (20" Chain)
**	PTWC-24-565	Rear Roller Assemble (24" Chain)
N	GWC-F-1634	Front Roller Assembly (16" Chain)
**	GWC-F-2034	Front Roller Assembly (20" Chain)
**	GWC-F-2434	Front Roller Assembly (24" Chain)
O	500-1-210	Fan Shaft (Specify Length)
P	300-FL-101-L	24" Spinner Disc (Only) 7 Ga. Mild Steel (L.H.)
**	300-FL-102-L	24" Spinner Disc (Only) S.S. (L.H.)
**	300-FL-101-R	24" Spinner Disc (Only) 7 Ga. Mild Steel (R.H.)
**	300-FL-102-R	24" Spinner Disc (Only) S.S. (R.H.)
Q	300-FL-112	4 Bolt Fan Hub
**	300-FL-112A	4 Bolt Fan Hub Stainless Steel
R	300-FL-107-L	F/L Spinner Blade Mild Steel (L.H.)

**	300-FL-108-L	F/L Spinner Blade Heat Treated (L.H.)
**	300-FL-109-L	F/L Spinner Blade S.S. (L.H.)
**	300-FL-107-R	F/L Spinner Blade Mild Steel (R.H.)
**	300-FL-108-R	F/L Spinner Blade Heat Treated (R.H.)
**	300-FL-109-R	F/L Spinner Blade S.S. (R.H.)
S	300-FT-002C	S-1 1/4" GW Shaft 17"
T	300-FT-002A	L-1 1/4" GW Shaft 15"
U	300-1-214	AFC Motor Mount – Mild Steel
**	300-1-214A	AFC Motor Mount – Stainless Steel
V	400-C-201	M-30 - 2" Gear Spinner Motor
W	300-FT-005	Ground Wheel Frame (Standard or Narrow Track)
X	300-FT-004	Ground Wheel Hub 5Bolt

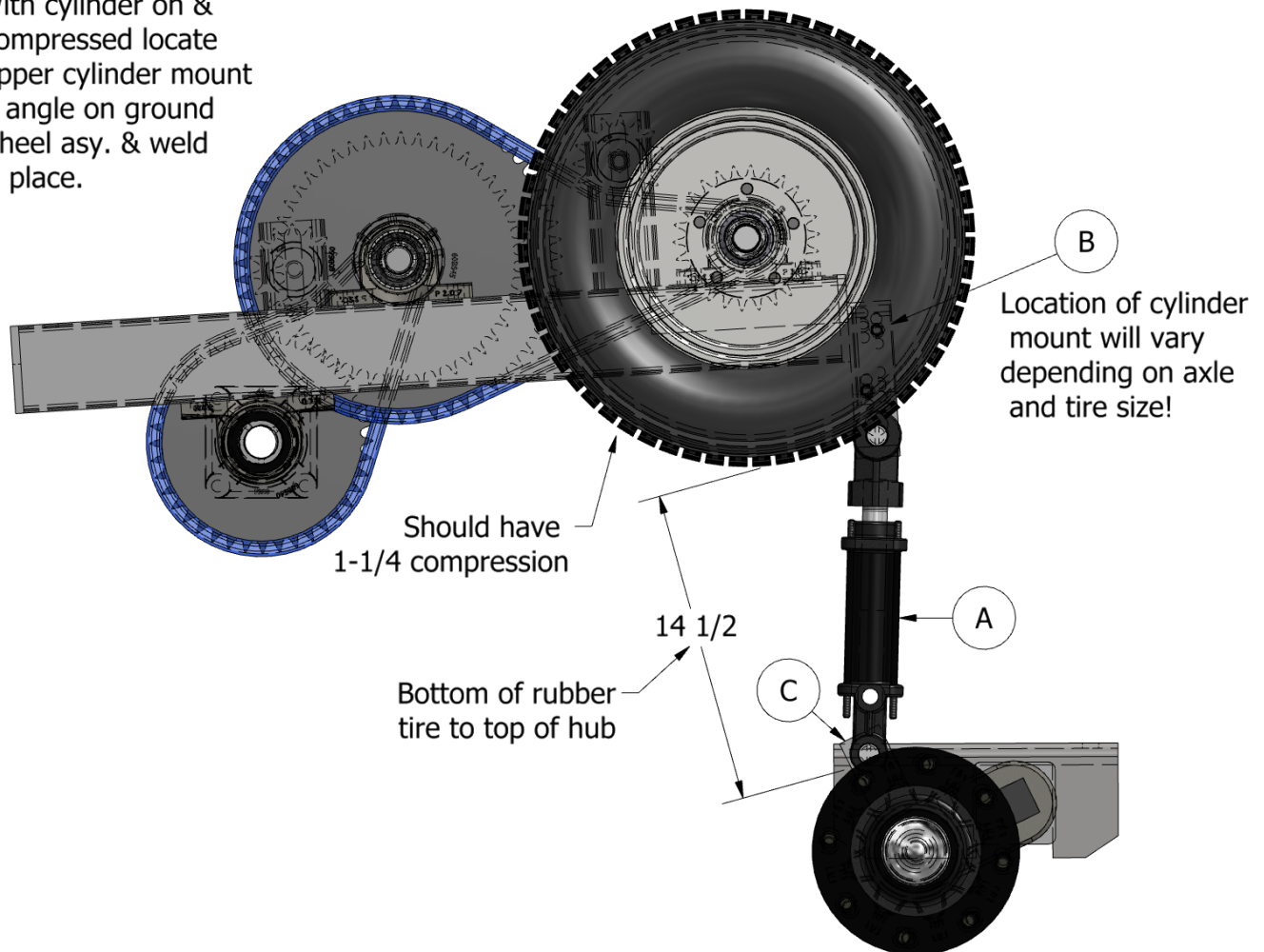
*** Not Shown**

**** Optional**

Hydraulic Cylinder Engagement assembly

(View shown is for 16.5 tires)

With cylinder on &
Compressed locate
Upper cylinder mount
& angle on ground
wheel asy. & weld
in place.



Hydraulic Cylinder Engagement - Parts List

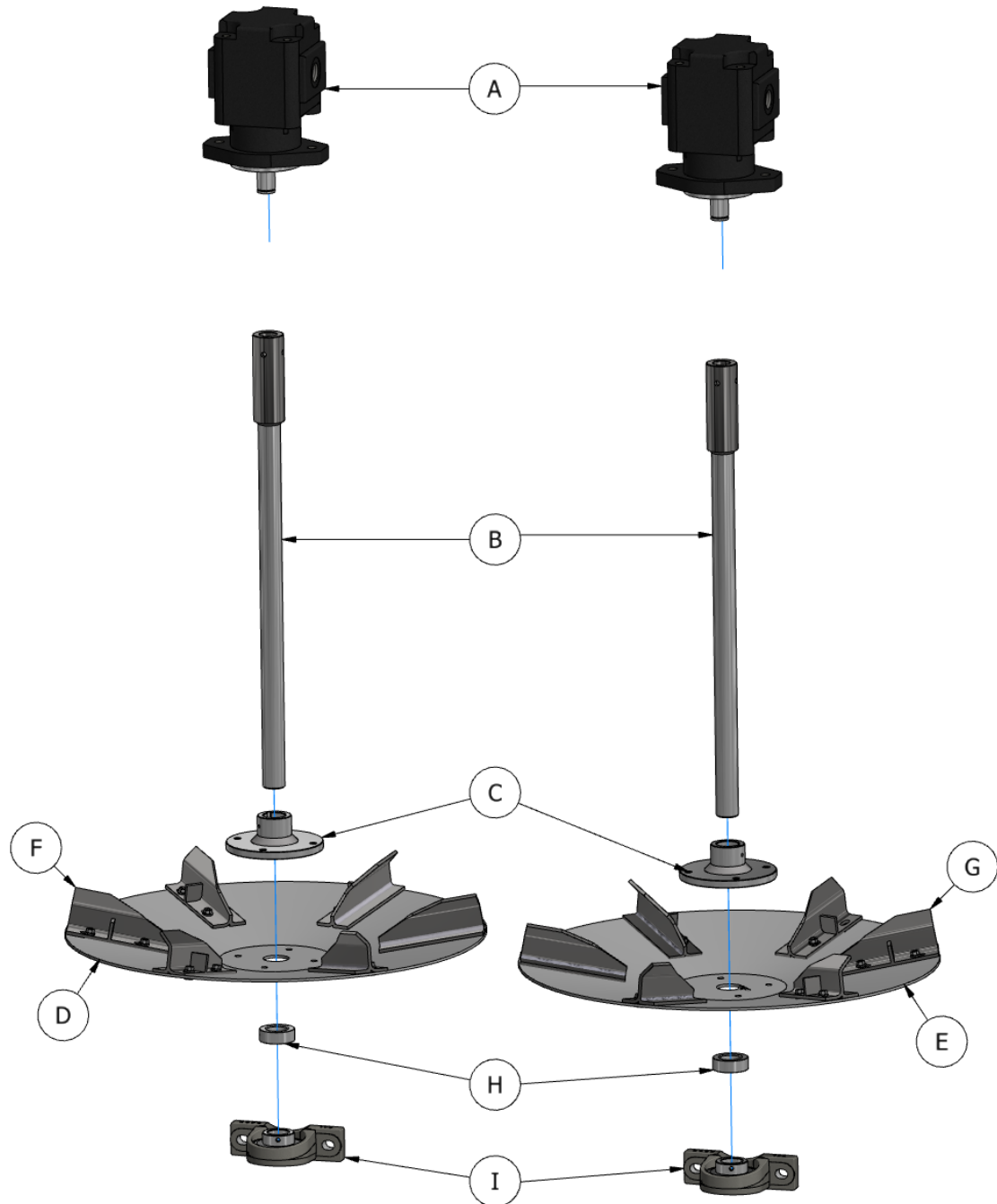
Ref.	Part Number	Description	
A.	400-1-305	Hydraulic Cylinder-4"	
B.	300-FT-048	Upper Cylinder Mount 6-5/8"	-14L or 16.5 Tires
**	300-FT-049	Upper Cylinder Mount 10"	-19L or 21.5 Tires
**	300-FT-050	Lower Cylinder Mount 8"	-14L or 16.5 Tires
C.	300-FT-051	Lower Cylinder Mount 4"	-16.5L or 16.1 Tires
**	300-FT-052	Lower Cylinder Mount 8"(bent)	-19L or 16.1 Tires
**	300-FT-053	Lower Cylinder Mount 12"(bent)	-21.5L or 16.1 Tires

** Option

Section 4

Hydraulic Spinners

Hydraulic Spinners Exploded View

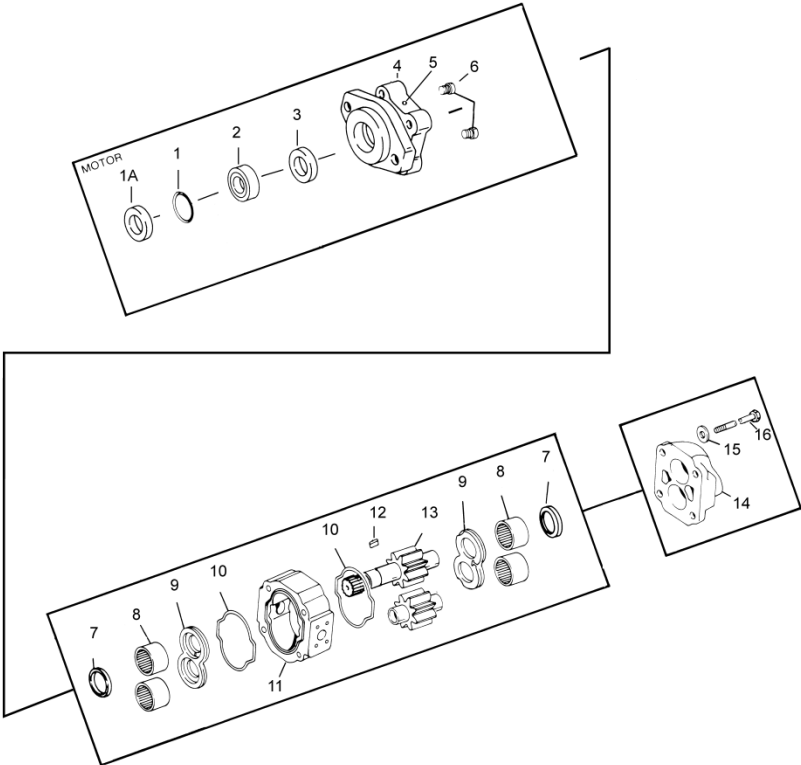


Hydraulic Spinners – Parts List

Ref.	Part Number	Description
A)	400-C-201	M-30 - 2" Gear Spinner Motor
B)	300-1-210	Spinner Shaft - Carbon M30 (Specify Length)
**	300-1-211	Spinner Shaft - Stainless M30 (Specify Length)
C)	300-FL-112	4 Bolt Spinner Hub - Carbon
**	300-FL-112A	4 Bolt Spinner Hub - Stainless
D)	300-FL-101-L	24" Spinner Disc (Only) 7 Ga. Mild Steel (L.H.)
**	300-FL-102-L	24" Spinner Disc (Only) S.S. (L.H.)
E)	300-FL-101-R	24" Spinner Disc (Only) 7 Ga. Mild Steel (R.H.)
**	300-FL-102-R	24" Spinner Disc (Only) S.S. (R.H.)
F)	300-FL-107-L	F/L Spinner Blade Mild Steel (L.H.)
**	300-FL-108-L	F/L Spinner Blade Heat Treated (L.H.)
**	300-FL-109-L	F/L Spinner Blade S.S. (L.H.)
G)	300-FL-107-R	F/L Spinner Blade Mild Steel (R.H.)
**	300-FL-108-R	F/L Spinner Blade Heat Treated (R.H.)
**	300-FL-109-R	F/L Spinner Blade S.S. (R.H.)
H)	300-1-208	Spacer - Lock Collar for 1-1/4" Shaft
I)	UCP-207-20	1-1/4" Pillow Block Bearing

**** Optional**

Spinner Motor M-30 – 2



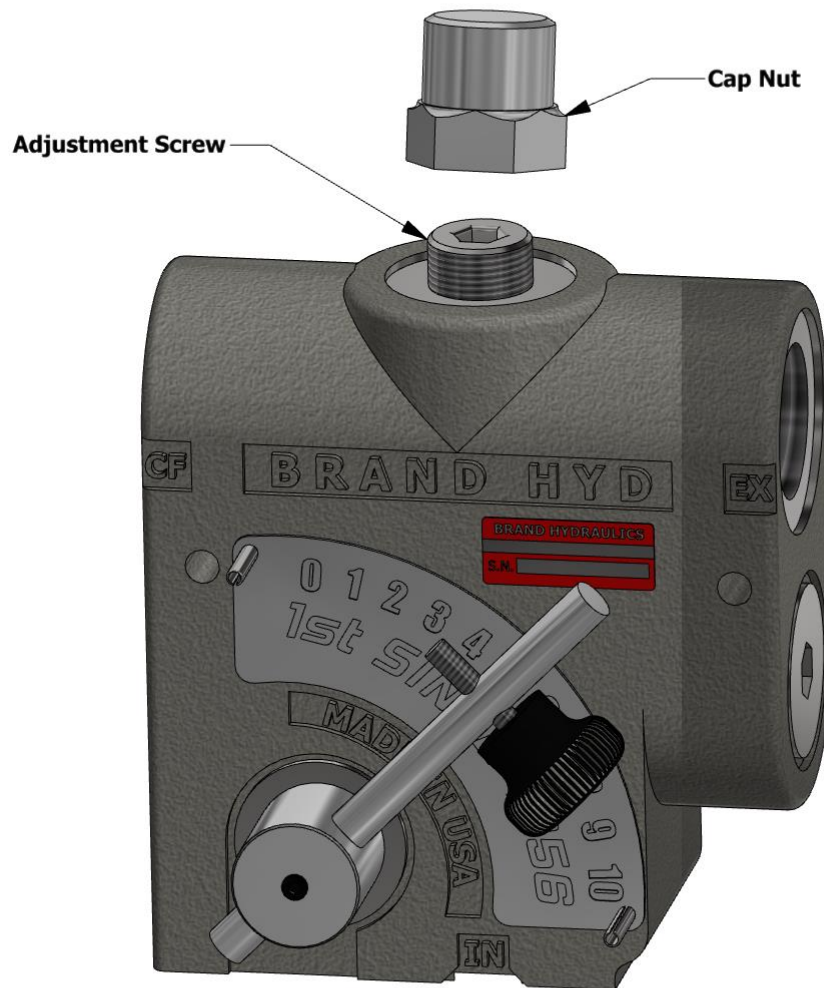
Assembly Parts

<u>Assembly Parts Description</u>
1A) GREASE SEAL
1) SNAP RING
2) BEARING SPACER
3) MOTOR SHAFT SEAL
4) 2-BOLT-B SHAFT END COVER (SEC)
5) PIPE PLUG 1/4" NPT FOR (SEC)
6) CHECK VALVE ASSEMBLY
7) RING SEAL
8) ROLLER BEARING
9) THRUST PLATE
10) GEAR HOUSING GASKET SEAL
11) GEAR HOUSING 1"
12) SHAFT KEY
13) GEAR SET 1-1/2"L X 1" KEYED
14) PORT END COVER (PEC)
15) WASHER 5/8"
16) HEX HEAD BOLT 5/8-11 X 4-1/2"

M-30 Motor Parts List

<u>Description</u>	<u>Part #</u>
M-30 - 2 Motor	400-C-201
M-30 Seal Kit (includes 1A, 3, 10)	400-C-206
1A) GREASE SEAL	400-C-215
3) MOTOR SHAFT SEAL	400-C-205
8) ROLLER BEARING	400-C-204
9) THRUST PLATE	400-C-229
10) GEAR HOUSING GASKET SEAL	400-C-205A
12) SHAFT KEY	400-C-207
13) GEAR SET 2"L X 1" KEYED	400-C-211
SEAL INSTALLATION SLEEVE	400-C-226

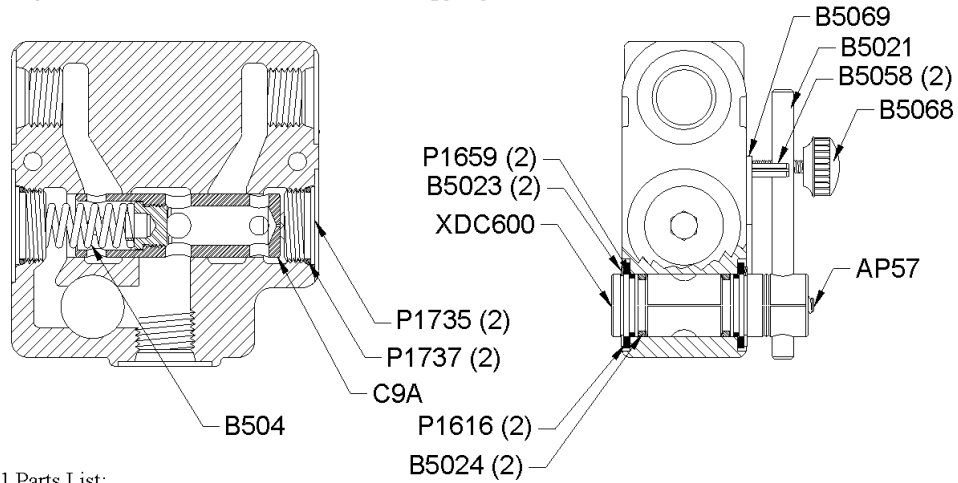
FCR-51-.75 Flow Control Valve



Note: Never bottom out the adjustment screw, this could damage the hydraulic system!



FC51 (Manual Flow Control and 0-30 gpm):



FC51 Parts List:

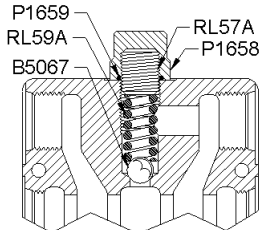
AP57 1/4-20 x 1/4 Set Screw
 B5021 Handle
 B5023 Snap Ring
 B5024 O-ring 2-116
 B504 Spring
 B5058 3/16 x 7/8 Spring Pin
 B5068 10-32 x 3/4 Thumb Screw

B5069 FC51 Dial Plate
 C9A Spool (Standard)
 C9A-093 Spool (.093 Dash Pot)
 C9A-2P Spool (2 Port)
 C9AS Spool (.020 Dash Pot)
 P1616 Nylon Seal Retainer
 P1659 O-ring 2-019 90D

P1735 #12 SAE Plug
 P1737 O-ring 2-021 90D
 P1740 Identification Tag
 XDC598 Spool (30 gpm)

FC Options:

FCR51 (BALL SPRING RELIEF)



FCR51 Parts List:

B5067 1/2 Steel Ball
 P1658 Cap Nut
 P1659 O-ring 2-019 90D
 RL57A Adjusting Screw
 RL59A Spring

Note: Casting not sold separately.
 Replace with new valve.

Fertilizer and Lime Spreader Pressure Settings for Spinners

1) Checking Pressure

- A) Run unit empty at ordinary operating speed (engine RPM's) for approximately 10 minutes. This allows oil to reach operating temperatures.
- B) Shut Tractor Hydraulics off and install pressure gauge into "CF" port on flow control valve.
(Refer to hydraulic flow control valve drawing – page?)
- C) Set flow control valve on 10.
- D) Restart engine
- E) With Hydraulics engaged, increase tractor engine RPM's to ordinary operating speed.
- F) Pressure gauge should read 2000 PSI. If not adjust pressure as outlined below.

Caution: When checking pressure, never allow tractor to run over a few seconds with pump running and gauge installed in line. Once pressure reading is taken disengage hydraulics immediately.

2) Adjusting Hydraulic Flow Control Valve Pressure:

- A) Remove cap nut on flow control valve (located on top of valve)
- B) Using a 5/16" Allen wrench turn adjustment screw "IN" to increase pressure or "OUT" to decrease pressure.
- C) Turn adjustable screw on half turn, and then check pressure setting as outlined above.
- D) Continue this procedure until pressure gauge reads 2000 PSI.

NOTE: If unable to obtain 2000 PSI contact your local dealer or Chandler Equipment Service Department at 1-800-243-3319

NOTE: For OPEN CENTER Hydraulic Systems ONLY, Do NOT use with CLOSED CENTER Hydraulic Systems

WARNING!!!

To avoid damage to Tractor or Chandler Spreader use following procedure when hooking up the hydraulic spinner option to the tractors hydraulic system.

Hydraulic System Pumps:

Today's tractors are equipped with either Constant Displacement or Variable Displacement Hydraulic Pumps. Constant Displacement Pumps put out a constant flow regardless of pressure (until the relief valve bypasses the flow). The only way to vary the flow on this type of pump is to change the engine speed. Variable Displacement Pumps will produce only the flow required by the implement until total pump output is reached. If less than total pump output is required, an automatic stroke control mechanism decreases the pump output to maintain a constant pressure and flow. The output varies according to demand.

Hydraulic Controls:

There are two types of hydraulic control or spool valve used on tractors today. They are named after the design of the spool valves themselves. One is called "Open Center" because in the neutral (or center) position it is open to allow flow back to the hydraulic reservoir. Open Center Valves are used exclusively on Constant Displacement Pumps. The other valve type is called a "Closed Center" because in the neutral (or center) position all hydraulic flow is stopped on the circuit. Closed Center Valves are used exclusively on Variable Displacement Pumps.

There are four basic positions for each type of spool valve. They are Raise, Neutral, Lower, and Float (in order, from back to front). The names used for these positions vary somewhat between manufactures, but the order of the positions does not.

To properly operate a hydraulic motor on a tractor hydraulic circuit, only the **Lower** and **Float** positions should be used. **Use Lower for "On" and Float for "Off"**. The Float position is recommend for turning the motor off because it allows the remote circuit to flow in a continuous loop allowing the motor to free wheel to a stop and also does not trap pressure in the circuit.

Both Open and Closed Center Valves can trap oil on both sides of the circuit in the Neutral position. Use of this position for "off" will cause premature failure of the hydraulic motor.

The Raise position is not recommend for "On" because the valve must travel through the Neutral position to get to Float.

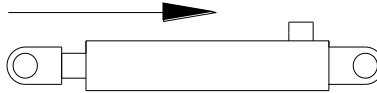
Many tractor hydraulic systems route return lines through filters or other restrictive elements, which can cause an increase in the return circuit pressure. It is recommend to utilize either a standard (or purchase an optional) **low-pressure return circuit**. This will allow for less oil heat generation, lower horsepower consumption, and longer oil seal life.

Consult with your tractor manufacturer to see if your tractor is or can be equipped in this way.

Hooking up Hydraulic Spinner Option to Tractor Remotes

When hooking up Hydraulic Spinner Option use the following procedure.

Connect Pressure Hose to tractor remote using coupler marked for the Lower Position.



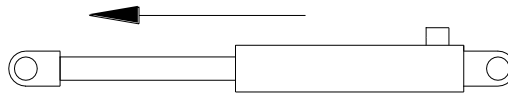
(Symbol indicates Lower Position)

This will turn the spinners in proper direction when lever is in the Lower position.

If tractor is equipped with hydraulic motor return option (low pressure return circuit) Connect Return Line here

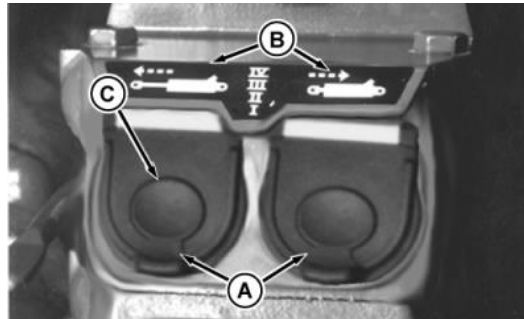
Or

Connect Return Hose to tractor remote using coupler marked for the Raise Position.



(Symbol indicates Raise Position)

Many of today's tractors you can select for a motor or cylinder. Be sure that you have selected Motor not Cylinder. (This will also allow oil to flow similar to a low-pressure circuit)



(John Deere Tractor shown symbols may vary on different manufactures)

Caution: When hooking up any hydraulic lines to tractor turn engine “OFF” and make sure all Remote Levers are in the neutral position.

Important: Hydraulic hoses can fail due to physical damage, kinks, age and exposure.

Check hoses daily and replace faulty hoses immediately to avoid possible personal injury or damage to equipment.

To check spinners for proper rotation use the following procedure.

- A) Start engine on tractor.
- B) Start spinners by pushing remote lever forward into the “Lower” position. Check to be sure spinners are turning the proper direction (see drawing page 5)
- C) If spinners are not turning proper direction switch hoses in remotes.
- D) When turning spinners “OFF” push Lever forward into the Float Position.
- E) **Never** turn spinners **“OFF”** by pushing Lever into **“Neutral”** this will stop spinners suddenly, not let them free spin to a stop and will damage spinner motors or tractor hydraulic system.

If you are not certain how to hookup the pressure and return line contact Chandler Equipment Co. or your local dealer.

NOTE: All Chandler Spreaders with the hydraulic spinner option will run with an Open or Closed System. If running with an Open System the ball valve underneath the flow control valve must be “ON”. If running with a “CLOSED” System the ball valve should be “OFF”. (See drawing page 5)

Setting Spinner Speed using Hydraulic Spinner Option

Proper spinner speed for most common applications of Fertilizer and Lime is 725 RPM. The Flow Control Valve located on the side of the spreader controls this speed.

Use the following procedure to set spinner speed:

(After reading pervious pages and determining which hydraulic system you are using)

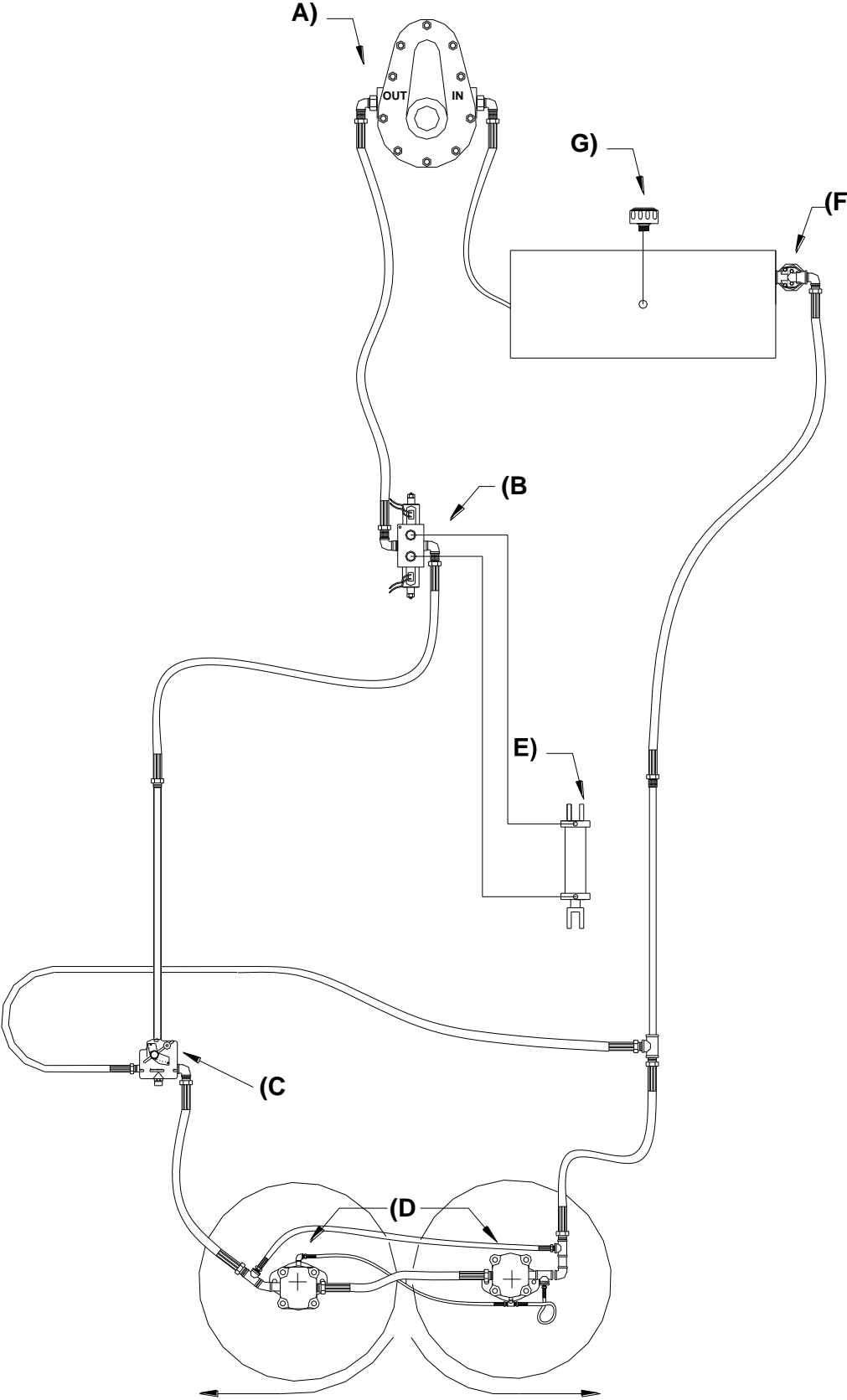
- A) After hooking up Pressure / Return lines and making sure they are turning in the proper direction.
- B) Set Flow Control Valve on “6”
- C) Start Tractor engine
- D) Engage spinners by pushing remote lever forward into the lower position.
- E) This should start turning the spinners.
- F) Using a hand tact check spinner speed.
- G) If spinner speed is not 725 RPM use flow control valve to adjust spinners to proper speed.
- H) Repeat this process if needed.
- I) Some material may take a different spinner speed.
(Such as with lime spinner speed may need to be turned up to 750 – 800 RPM, lighter materials may need slower spinner speed)

If you have any questions on spinner speed contact Chandler Equipment Co. or your local dealer.

Section 5

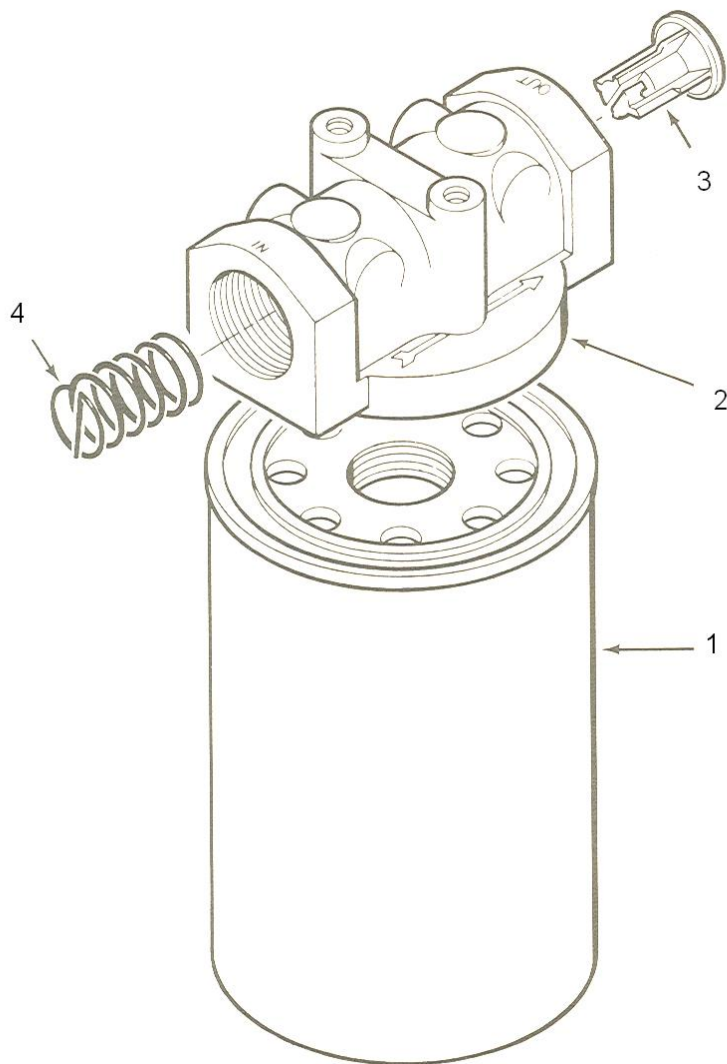
**Self Contained
Hydraulic with
Hydraulic
Spinners and
Press Wheel
Drive Conveyor**

9 PT – FT Hydraulic System – Self Contained w/ Press Wheel



- A) 400-R-115 Prince Single Pump (540 PTO) – HC-PTO-2A**
- B) 400-1-306 MV-4 Control Valve w/ Lock**
- C) 400-1-313 Flow Control Valve with Built-in Relief**
- D) 400-C-201 M - 30 2" Gear Spinner Motor**
- E) 400-1-305 Hydraulic Cylinder – 2.5" x 4"**
- F) 400-1-319A Filter Head**
400-1-319 Filter Element - *Not Shown*
- G) 400-1-317 Breather Cap**
- H) 400-1-332 1" Gate Valves - *Not Shown***

Hydraulic Filter



1) Filter Element 400-1-319

2) Filter Head 400-1-319A (when ordering this part # items 3,4 are included)

Fertilizer and Lime Spreader Pressure Settings for Spinners

1) Checking Pressure

- A) Run unit empty at ordinary operating speed (engine RPM's) for approximately 10 minutes. This allows oil to reach operating temperatures.**
- B) Shut Tractor Hydraulics off and install pressure gauge into "CF" port on flow control valve.
(Refer to hydraulic flow control valve drawing – page?)**
- C) Set flow control valve on 10.**
- D) Restart engine**
- E) With Hydraulics engaged, increase tractor engine RPM's to ordinary operating speed.**
- F) Pressure gauge should read 2000 PSI. If not adjust pressure as outlined below.**

Caution: When checking pressure, never allow tractor to run over a few seconds with pump running and gauge installed in line. Once pressure reading is taken disengage hydraulics immediately.

2) Adjusting Hydraulic Flow Control Valve Pressure:

- A) Remove cap nut on flow control valve (located on top of valve)**
- B) Using a 5/16" Allen wrench turn adjustment screw "IN" to increase pressure or "OUT" to decrease pressure.**
- C) Turn adjustable screw on half turn, and then check pressure setting as outlined above.**
- D) Continue this procedure until pressure gauge reads 2000 PSI.**

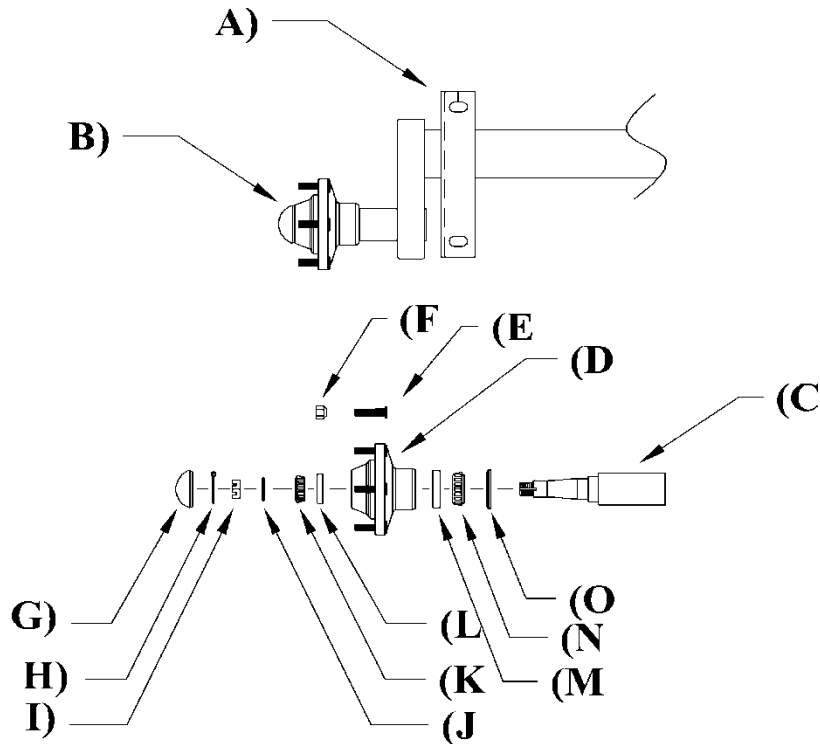
NOTE: If unable to obtain 2000 PSI contact your local dealer or Chandler Equipment Service Department at 1-800-243-3319

Section 6

Axle Assembly

7,000# Torsion Axle

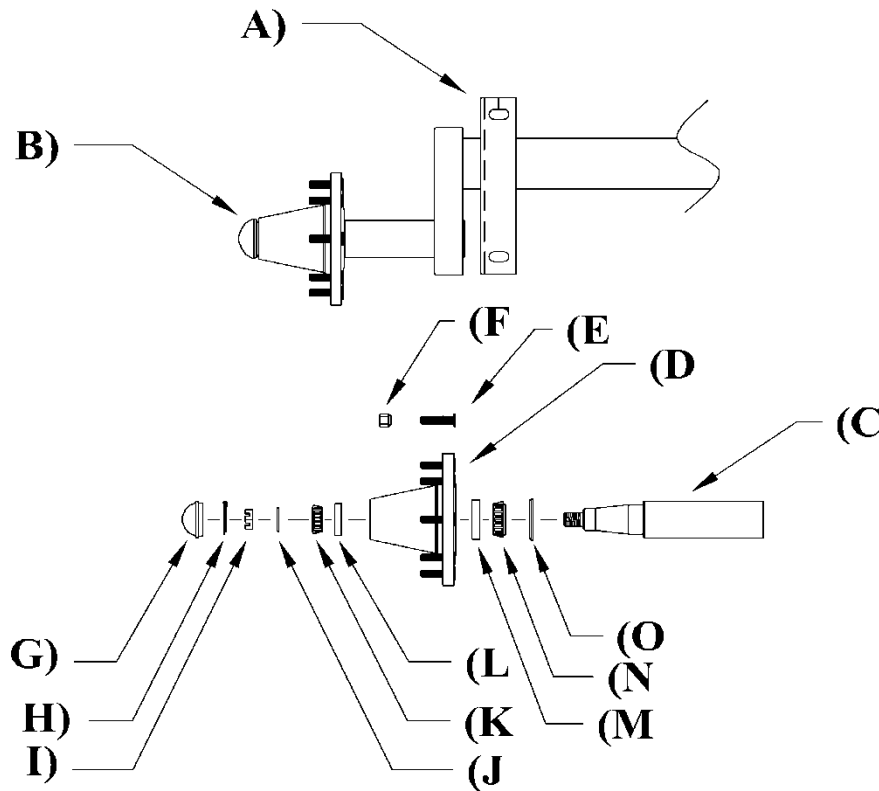
7,000 LB. AXLES AXLE-HUB ASSY.



Ref.	Part Description	Part Number
A	7000 # Axle Assembly Complete (Standard)	800-2-119
B	6 Bolt Hub Assy.	800-2-104
C	Spindle	800-2-115
D	Hub Only	800-2-103
E	Wheel Stud	800-2-118
F	Wheel Nut	800-2-117
G	Hub Cap	800-2-107
H	Cotter Pin	800-2-102
I	Slotted Nut	800-2-114
J	Washer	800-2-116
K	Outer Cone (LM-67048)	800-2-111
L	Outer Race (LM-67010)	800-2-112
M	Inner Race (LM-501310)	800-2-109
N	Inner Cone (LM-501349)	800-2-108
O	Oil Seal	800-2-113

10,000# Torsion Axle

10,000 LB. AXLES AXLE-HUB ASSY.



Ref.	Part Description	Part Number
A	10000 # Axle Assembly Complete (Standard)	800-3-116
B	8 Bolt Hub Assy.	800-3-102
C	Spindle	800-3-111
D	8 Bolt Hub Only	800-3-101
E	Wheel Stud	800-3-114
F	Wheel Nut	800-3-113
G	Hub Cap	800-3-103
H	Cotter Pin	800-3-115
I	Spindle Nut	800-3-109
J	Washer	800-3-112
K	Outer Cone (LM-501349)	800-3-106
L	Outer Race (LM-501310)	800-3-107
M	Inner Race (LM-506810)	800-3-105
N	Inner Cone (LM-506849)	800-3-104
O	Oil Seal	800-3-108

Tire and Wheel Combinations

Axle	Bolt Pattern	Tire Size	Ply	Wheel Size	Air Pressure (psi)	Tire Part #	Wheel Part #	Tire and Wheel Part #
7000 #	6	12.5L x 15	8	15 x 10 LB	36	800-1-101	800-1-109	800-1-119
7000 #	6	14L x 16.1	8	16.1 x 11 C	32	800-1-102	800-1-110	800-1-120
10000#	8	16.5L x 16.1	10	16.1 x 14 C	36	800-1-103	800-1-111	800-1-121
10000#	8	19L x 16.1	12	16.1 x 16 C	36	800-1-104	800-1-112	800-1-122
10000#	8	21.5L x 16.1	12	16.1 x 16 C	36	800-1-105	800-1-112	800-1-123-8

Lug Nut Torque Specifications (ft-lbs)

Axle	Stud Size	Part Number	Torque (ft-lbs)
7000 #	9/16"	800-2-118	110-125
10000#	5/8"	800-3-114	125-140

Section 7

Basic Set-Up & Operation

Basic Operation of a Pull Type Spreader

- 1) Make sure that flow control valve is adjusted properly for spinner speed.
- 2) Raise gate for desired rate of application.
- 3) Adjust material divider accordingly.
- 4) Engage Hydraulic Remote/PTO control, once engaged, spinners should begin turning.
- 5) Engage press wheel.
- 6) Conduct a spread pattern pan test, and make any required adjustments.
- 7) You are now ready to spread.
- 8) Use the following guidelines if any adjustments are necessary.

Setting Spinner Speed – Hydraulic Spinners Only

We recommend a spinner speed of **650–700 RPM** as this unit is designed for a 50ft. spread pattern for fertilizer and a 30ft. pattern for lime. This spreader is equipped with a flow control valve to adjust spinner speed and to maintain a constant speed after your tractor reaches proper PTO RPM's. Generally the flow control valve will need to set at about 6, however due to machining tolerances, this setting will vary from one spreader to the next.

Spinner speed should be set following these guidelines:

- 1) Rev engine speed to proper PTO RPM (540/1000).
 - a. Before starting engine be sure that there is no material or obstructions in bed or on spinners.
- 2) Take a hand tach reading on spinner shaft.
 - a. Spinners shafts are center drilled underneath the spinners to accept a hand tach.
 - b. If unit has a **control system** with spinner speed sensor and spinner speed read out, this can be used in place of hand tach reading.
- 3) Adjust lever on flow control valve until desired speed is reached - the higher the indicator number the faster the spinners should run.
- 4) After getting correct spinner speed, increase tractor engine RPMs to proper PTO RPM (540/1000) - spinner speed should remain within reason of the desired speed.
- 5) If spinner speed does not remain constant within reason, disassemble flow control valve and clean parts as outlined under **Troubleshooting Procedures**, Problem I, investigations **B** and **C**.

NOTE: In some instances, due to density of materials, a faster or slower spinner speed may be desired. If so, follow above procedures and set speed accordingly.

CAUTION: Due to normal wear, the setting on the flow control valve may need to be set higher as time goes by. Check spinner speed often.

CAUTION: Spinner speed is one of the most important factors in achieving a proper spread pattern and must be set properly and checked regularly.

NOTE: If the spinners are running too fast you will tend to leave a thin streak behind the center of the tractor, if they are too slow it will leave a heavy streak.

Record Valve Setting _____

Setting Material Divider

Material Divider settings are very important to the accuracy of the spread pattern. Improper divider settings will cause light or heavy streaks in the field.

Material Divider should be set following these guidelines:

- 1) Material Divider has an adjustment rod at the rear of the divider. Moving the divider “IN” or “OUT” will change the spread pattern.
- 2) Moving the Material Divider “OUT” will cause the spread pattern to be heavy on the outside of the spread swath.
- 3) Moving the Material Divider “IN” will cause the spread pattern to be heavy in the middle of the spread swath.

Material Divider Settings:

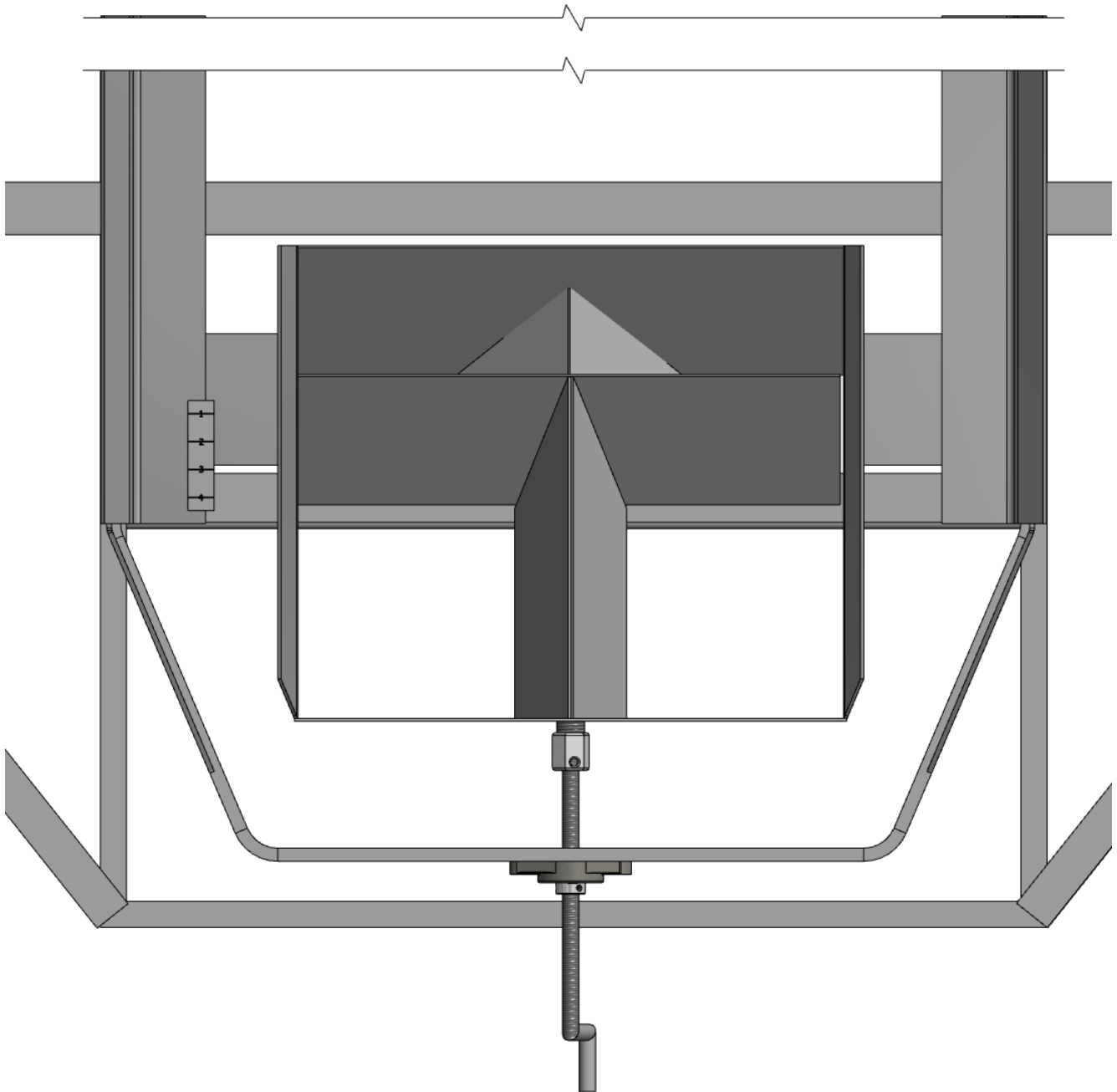
<u>Material</u>	<u>Setting</u>	<u>Pattern</u>
Lime	1-1/2"	30'
Blended Fertilizer	2-1/2"	50'
Ammonia Nitrate	3-1/4"	50'
Urea	3-3/4"	50'

NOTE: These are recommended settings and will vary according to material weight.

NOTE: When spreading Lime, remove the rear section of the material divider.

NOTE: Chandler Equipment Co. recommends each spreader to be tested, using a pan test kit, every season to ensure proper spread pattern.

Flow Divider Assembly Overhead View



CHANDLER EQUIPMENT COMPANY GAINESVILLE, GA.

PHONE 770-536-8891
TOLL-FREE 1-800-243-3319

Rate Chart – 16" Mesh Chain

SPROCKET RATIO 11/60 50' SPREAD						
GATE SETTING ↓	"POUNDS PER ACRE"					
1	45	50	55	60	65	70
1 1/2	67	75	83	90	98	105
2	90	100	110	120	130	140
2 1/2	112	125	138	150	163	175
3	135	150	165	180	195	210
3 1/2	157	175	193	210	228	245
4	180	200	220	240	260	280
4 1/2	202	225	248	270	293	315
5	225	250	275	300	325	350
5 1/2	247	275	303	330	358	385
6	270	300	330	360	390	420
MAT'L WGT. PER CU. FT.	45#	50#	55#	60#	65#	70#

CHART "A"-USED PRIMARILY FOR FERTILIZER
APPLICATION RATES RANGING FROM
100# TO 500# PER ACRE @ 50' SPREAD

SPROCKET RATIO 26/45 50' SPREAD						
GATE SETTING ↓	"POUNDS PER ACRE"					
2	278	308	338	370	400	430
2 1/2	345	385	423	463	500	538
3	417	462	507	555	600	645
3 1/2	486	539	592	648	700	753
4	556	616	676	740	800	860
4 1/2	625	693	761	833	900	968
5	695	770	845	925	1000	1075
5 1/2	764	847	930	1018	1100	1183
6	834	924	1014	1110	1200	1290
6 1/2	903	1001	1099	1203	1300	1398
7	973	1078	1183	1295	1400	1505
MAT'L WGT. PER CU. FT.	45#	50#	55#	60#	65#	70#

CHART "B"-USED PRIMARILY FOR FERTILIZER
APPLICATION RATES RANGING FROM 500#
TO 1000# PER ACRE @ 50' SPREAD

SPROCKET RATIO 26/45 30' SPREAD			
GATE SETTING ↓	"POUNDS PER ACRE"		
3	1230	1383	1536
3 1/2	1435	1614	1792
4	1640	1844	2048
4 1/2	1845	2075	2304
5	2050	2305	2560
5 1/2	2255	2536	2816
6	2460	2766	3072
6 1/2	2665	2997	3328
7	2870	3227	3584
7 1/2	3075	3458	3840
8	3280	3688	4096
MAT'L WGT. PER CU. FT.	80#	90#	100#

CHART "C"-LIMESTONE
APPLICATION @ 30'
SPREAD

"DIRECTIONS": A.) GO HORIZONTALLY ACROSS, AT BOTTOM OF CHART, AND LOCATE WEIGHT PER CUBIC FOOT OF MATERIAL YOU WISH TO SPREAD. (NOTE: IF MATERIAL WEIGHT PER CU.FT. IS UNKNOWN, WEIGH 1 GALLON OF MATERIAL AND MULTIPLY BY 7.5. THIS WILL GIVE YOU MATERIAL WEIGHT PER CUBIC FOOT.)
B.) GO VERTICALLY UP THE CHART IN CORRECT MATERIAL WEIGHT COLUMN UNTIL APPLICATION RATE YOU DESIRE IS FOUND. COME HORIZONTALLY ACROSS TO FIND CORRECT METERING GATE SETTING.
"CAUTION": BE SURE SPROCKET RATIOS AND SPREAD SWATHS CORRESPOND WITH CHART YOU ARE USING.

Rate Chart – 20” Mesh Chain

CHANDLER EQUIPMENT COMPANY GAINESVILLE, GA.

PHONE: (404) 536-8891
TOLL FREE: 1-800-243-3319

SPROCKET RATIO 11/60 50' SPREAD									
GATE SETTING ↓	“POUNDS PER ACRE”								
1	➤	57	64	77	84	90	97		
1 1/2	➤	88	97	106	116	126	135		
2	➤	117	130	142	155	168	180		
2 1/2	➤	143	160	177	194	210	226		
3	➤	175	194	213	232	252	271		
3 1/2	➤	201	226	250	270	295	318		
4	➤	231	258	285	310	338	362		
4 1/2	➤	260	290	320	350	380	410		
5	➤	291	323	355	388	420	455		
5 1/2	➤	319	355	391	427	462	498		
6	➤	378	420	462	504	546	588		
MAT'L WGT. PER CU. FT.	↓	45#	50#	55#	60#	65#	70#	75#	

CHART “A” -USED PRIMARILY FOR FERTILIZER
APPLICATION RATES RANGING FROM
100# TO 500# PER ACRE @ 50' SPREAD

SPROCKET RATIO 26/45 50' SPREAD									
GATE SETTING ↓	“POUNDS PER ACRE”								
2	➤	370	407	440	485	538	570		
2 1/2	➤	470	510	560	610	660	710		
3	➤	545	610	670	735	795	855		
3 1/2	➤	650	715	785	850	930	1000		
4	➤	733	815	897	980	1060	1140		
4 1/2	➤	824	917	1010	1190	1285	1370		
5	➤	919	1020	1121	1223	1325	1427		
MAT'L WGT. PER CU. FT.	↓	45#	50#	55#	60#	65#	70#		

CHART “B” -USED PRIMARILY FOR FERTILIZER
APPLICATION RATES RANGING FROM 500#
TO 1000# PER ACRE @ 50' SPREAD

**USE WITH 20" CHAIN
(ONLY)**

SPROCKET RATIO 26/45 30' SPREAD				
GATE SETTING ↓	“POUNDS PER ACRE”			
3	➤	1630	1835	2040
3 1/2	➤	1900	2140	2380
4	➤	2039	2450	2720
4 1/2	➤	2445	2750	3060
5	➤	2720	3060	3400
5 1/2	➤	3000	3365	3740
6	➤	3470	3670	4080
6 1/2	➤	3535	3980	4420
7	➤	3800	4280	4760
7 1/2	➤	4080	4590	5100
8	➤	4350	4900	5500
MAT'L WGT. PER CU. FT.	↓	80#	90#	100#

CHART “C” -LIMESTONE
APPLICATION @ 30'
SPREAD

“DIRECTIONS”: A.) GO HORIZONTALLY ACROSS, AT BOTTOM OF CHART, AND LOCATE WEIGHT PER CUBIC FOOT OF MATERIAL YOU WISH TO SPREAD. (NOTE: IF MATERIAL WEIGHT PER CU. FT. IS UNKNOWN, WEIGH 1 GALLON OF MATERIAL AND MULTIPLY BY 7.5. THIS WILL GIVE YOU MATERIAL WEIGHT PER CUBIC FOOT.)
B.) GO VERTICALLY UP THE CHART IN CORRECT MATERIAL WEIGHT COLUMN UNTIL APPLICATION RATE YOU DESIRE IS FOUND. COME HORIZONTALLY ACROSS TO FIND CORRECT METERING GATE SETTING.
“CAUTION”: BE SURE SPROCKET RATIOS AND SPREAD SWATHS CORRESPOND WITH CHART YOU ARE USING.

Rate Chart – 24” Mesh Chain

CHANDLER EQUIPMENT COMPANY • GAINESVILLE, GA

PHONE 770-536-8891
TOLL-FREE 1-800-243-3319

SPROCKET RATIO: 11/60 50-FT SPREAD						
GATE SETTING	"POUNDS PER ACRE"					
1 >	80	89	98	107	116	125
1.5 >	121	134	147	161	174	187
2 >	162	179	196	214	232	250
2.5 >	201	223	245	268	290	312
3 >	241	268	295	321	348	375
3.5 >	280	312	344	375	406	437
4 >	321	357	393	428	464	500
4.5 >	362	402	442	482	522	562
5 >	401	446	491	536	580	625
5.5 >	442	491	540	589	638	687
6 >	483	536	589	643	696	750
MAT'L WT. PER CU. FT.	45#	50#	55#	60#	65#	70#

CHART "A"-USED PRIMARILY FOR FERTILIZER
APPLICATION RATES RANGING FROM 100# TO 500#
PER ACRE @ 50-FT. SPREAD

SPROCKET RATIO: 26/45 50-FT SPREAD						
GATE SETTING	"POUNDS PER ACRE"					
2 >	469	521	573	625	677	729
2.5 >	586	651	716	781	846	911
3 >	703	781	859	938	1016	1094
3.5 >	819	911	1003	1094	1185	1276
4 >	938	1042	1146	1250	1354	1458
4.5 >	1055	1172	1289	1406	1523	1641
5 >	1172	1302	1432	1563	1693	1823
5.5 >	1288	1432	1576	1719	1862	2005
6 >	1407	1563	1719	1875	2021	2188
MAT'L WT. PER CU. FT.	45#	50#	55#	60#	65#	70#

CHART "B"-USED PRIMARILY FOR FERTILIZER
APPLICATION RATES RANGING FROM 500# TO 1000#
PER ACRE @ 50-FT. SPREAD

SPROCKET RATIO: 26/45 30-FT SPREAD						
GATE SETTING	"POUNDS PER ACRE"					
3 >	2083	2214	2344			
3.5 >	2431	2582	2734			
4 >	2778	2951	3125			
4.5 >	3125	3320	3516			
5 >	3472	3689	3906			
5.5 >	3819	4058	4297			
6 >	4167	4427	4688			
6.5 >	4514	4796	5078			
7 >	4861	5165	5469			
7.5 >	5208	5534	5859			
8 >	5556	5903	6250			
MAT'L WT. PER CU. FT.	80#	85#	90#			

CHART "C"-LIMESTONE
APPLICATION @ 30-FT. SPREAD

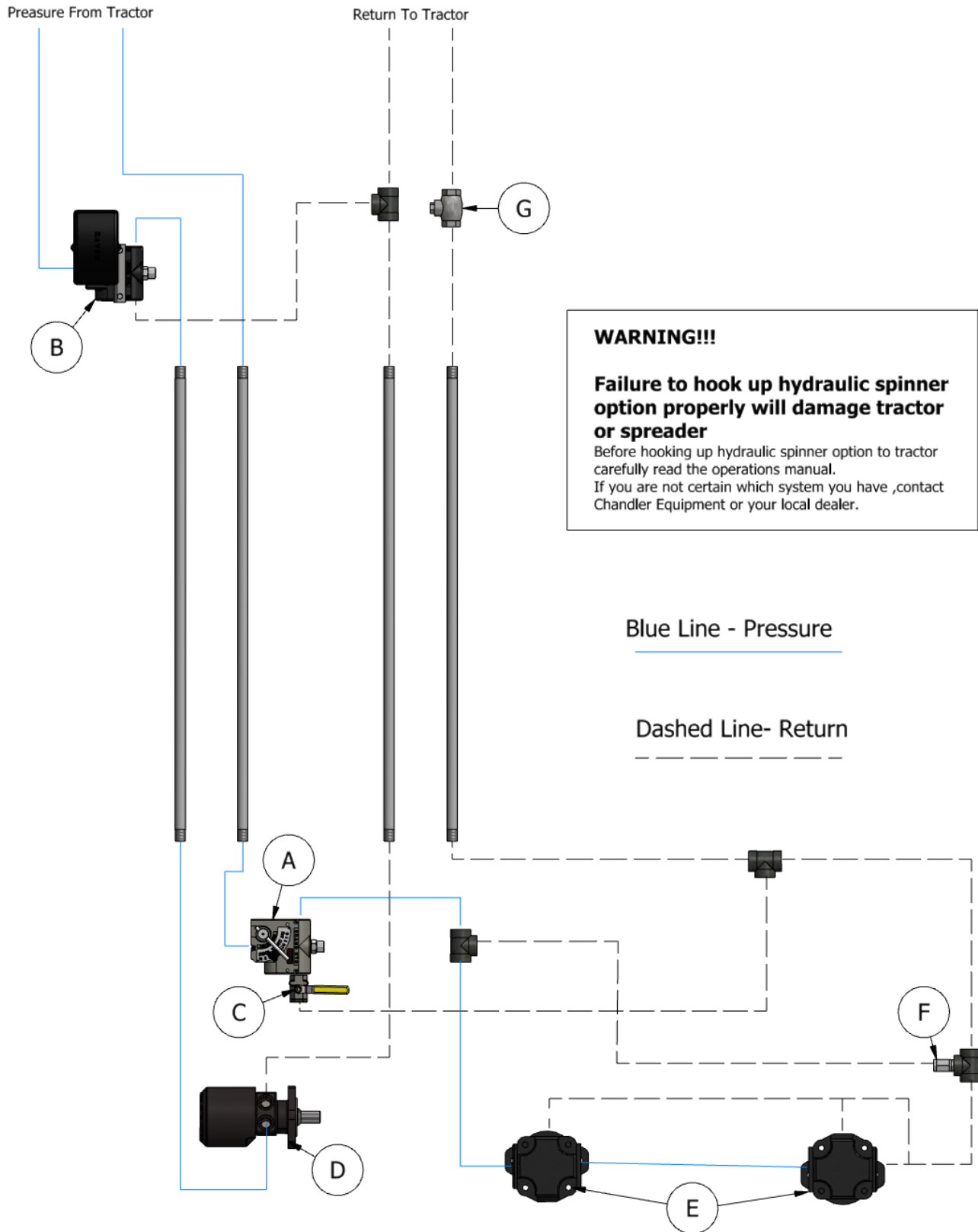
USE WITH 24" CHAIN ONLY

DIRECTIONS: A) GO ACROSS THE BOTTOM OF THE CHART AND LOCATE WEIGHT PER CUBIC FOOT OF MATERIAL YOU WISH TO SPREAD. IF WT. PER CUBIC FOOT IS UNKNOWN, WEIGH ONE GALLON OF MATERIAL AND MULTIPLY BY 7.5 FOR MATERIAL WEIGHT.
B) GO UP THE CHART IN CORRECT MATERIAL WEIGHT COLUMN UNTIL APPLICATION RATE YOU DESIRE IS FOUND. COME BACK ACROSS TO FIND CORRECT METERING GATE SETTING.
CAUTION: BE SURE SPROCKET RATIOS AND SPREAD SWATHS CORRESPOND WITH CHART YOU ARE USING.

Section 8

Plug to Tractor Hydraulics for Control System

10 & 20 PT-FT Hydraulic System - Plug To Tractor



Part #	Description
A) 400-1-313	Flow Control Valve with Built-in Relief
B) <u>Options:</u>	<u>Control Valve</u>
063-0171-846	Raven: 30 GPM PWM
063-0172-194	Raven: 30 GPM Fast Valve
35-02128	TeeJet: 30 GPM EXR - 4
C) 400-1-323	Ball Valve – ½” 3000psi
D) 400-R-106	Parker - MB - 18 - Single Rawson Drive
400-R-104	Parker - MB - 12 - Twin Rawson Drive
E) 400-C-201	M - 30 2" Gear Spinner Motor
F) 400-1-316	LT-50 Check Valve
G) 400-1-316A	Check Valve – ¾” 5psi

WARNING!!!

To avoid damage to Tractor or Chandler Spreader use following procedure when hooking up the hydraulic spinner option to the tractors hydraulic system.

Hydraulic System Pumps:

Today's tractors are equipped with either Constant Displacement or Variable Displacement Hydraulic Pumps. Constant Displacement Pumps put out a constant flow regardless of pressure (until the relief valve bypasses the flow). The only way to vary the flow on this type of pump is to change the engine speed. Variable Displacement Pumps will produce only the flow required by the implement until total pump output is reached. If less than total pump output is required, an automatic stroke control mechanism decreases the pump output to maintain a constant pressure and flow. The output varies according to demand.

Hydraulic Controls:

There are two types of hydraulic control or spool valve used on tractors today. They are named after the design of the spool valves themselves. One is called "Open Center" because in the neutral (or center) position it is open to allow flow back to the hydraulic reservoir. Open Center Valves are used exclusively on Constant Displacement Pumps. The other valve type is called a "Closed Center" because in the neutral (or center) position all hydraulic flow is stopped on the circuit. Closed Center Valves are used exclusively on Variable Displacement Pumps.

There are four basic positions for each type of spool valve. They are Raise, Neutral, Lower, and Float (in order, from back to front). The names used for these positions vary somewhat between manufactures, but the order of the positions does not.

To properly operate a hydraulic motor on a tractor hydraulic circuit, only the **Lower** and **Float** positions should be used. **Use Lower for "On" and Float for "Off"**. The Float position is recommend for turning the motor off because it allows the remote circuit to flow in a continuous loop allowing the motor to free wheel to a stop and also does not trap pressure in the circuit.

Both Open and Closed Center Valves can trap oil on both sides of the circuit in the Neutral position. Use of this position for "off" will cause premature failure of the hydraulic motor.

The Raise position is not recommend for "On" because the valve must travel through the Neutral position to get to Float.

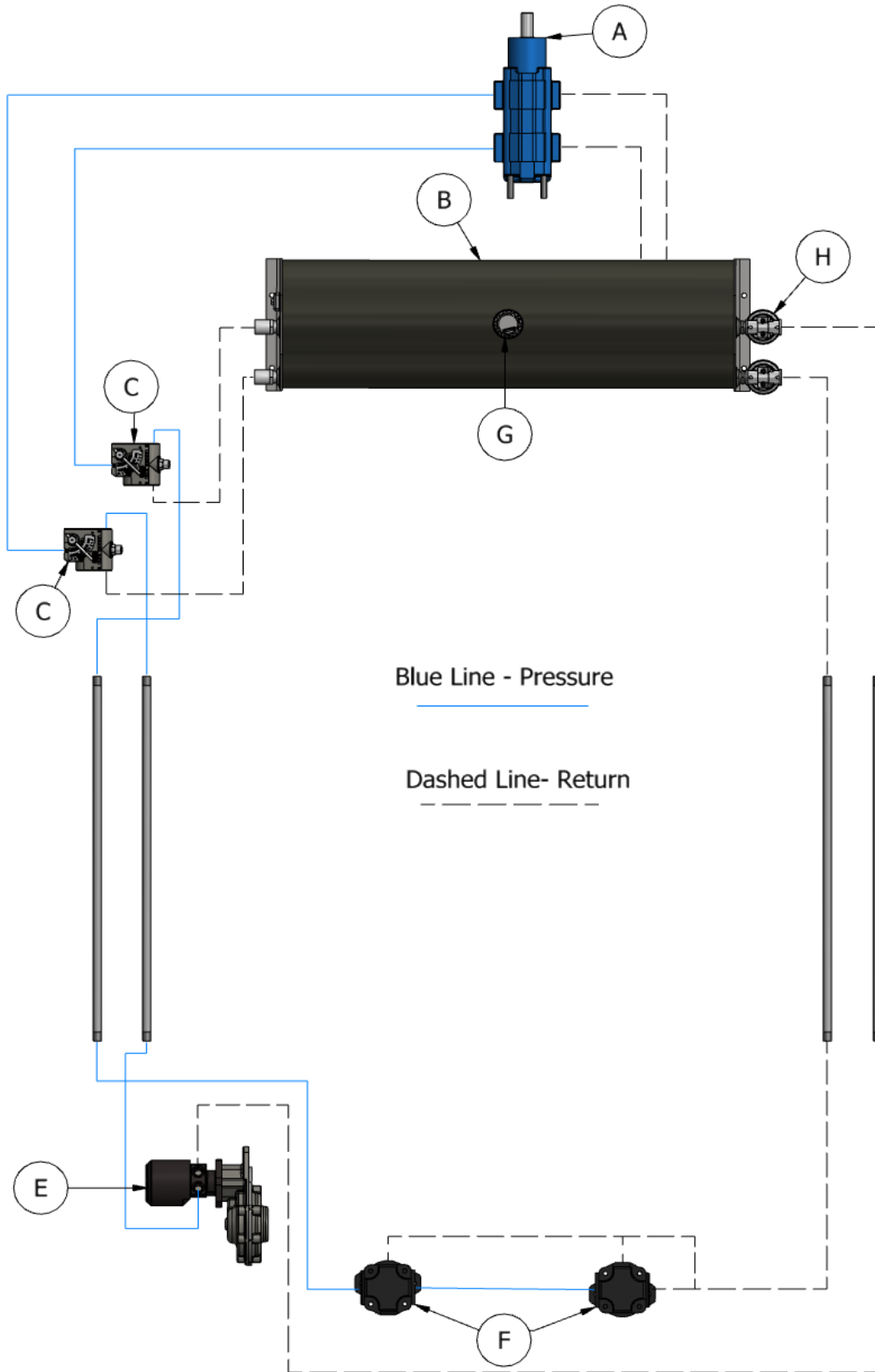
Many tractor hydraulic systems route return lines through filters or other restrictive elements, which can cause an increase in the return circuit pressure. It is recommend to utilize either a standard (or purchase an optional) **low-pressure return circuit**. This will allow for less oil heat generation, lower horsepower consumption, and longer oil seal life.

Consult with your tractor manufacturer to see if your tractor is or can be equipped in this way.

Section 9

Self Contained Hydraulic System

10 & 20 PTT-FT Hydraulic System Self Contained

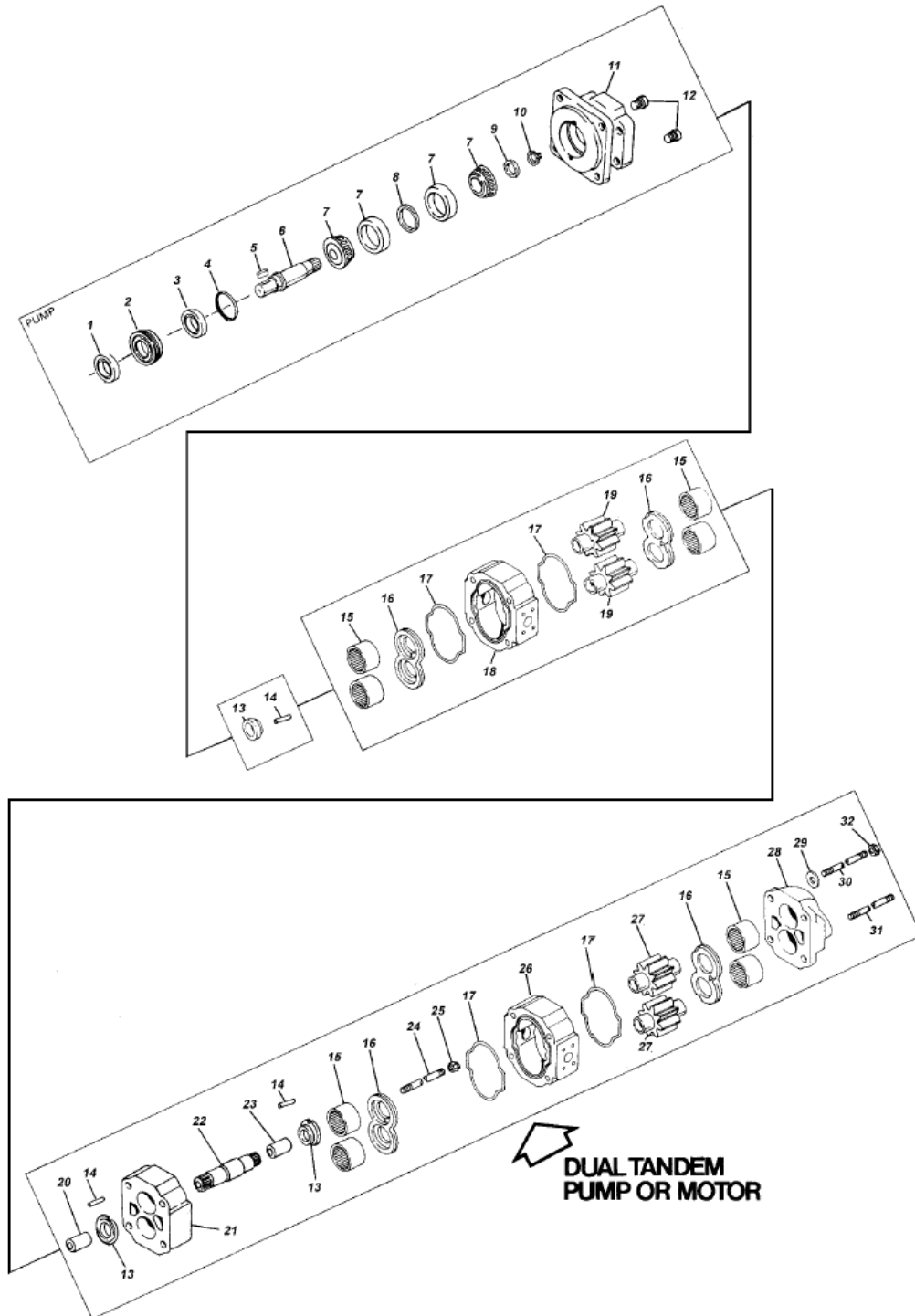


10 & 20 PTT – FT Hydraulic System – Self Contained

Part #	Description
A) 400-C-209B	P - 2500 Tandem Pump 2 1/2" x 2 1/2" (540 PTO)
400-C-209	P - 2500 Tandem Pump 1 1/2" x 1 1/2" (1000 PTO)
B) 400-1-308	Relief Valve - Nonadjustable - 2500 PSI (RD-25E)
C) 400-1-313	Flow Control Valve with Built-in Relief
D) <u>Options:</u>	<u>Control Valve</u>
063-0171-846	Raven: 30 GPM PWM
063-0172-194	Raven: 30 GPM Fast Valve
35-02128	TeeJet: 30 GPM EXR - 4
E) 400-R-106	Parker - MB - 18 - Single Rawson Drive
400-R-104	Parker - MB - 12 - Twin Rawson Drive
F) 400-C-201	M - 30 2" Gear Spinner Motor
G) 400-1-317	Breather Cap
H) 400-1-319A	Filter Head
400-1-319	Filter Element - *Not Shown*
I) 400-1-332	1" Gate Valves - *Not Shown*

2500 SERIES

P2500B(599SPL)AXHK25-62AHK25-1(CHA)

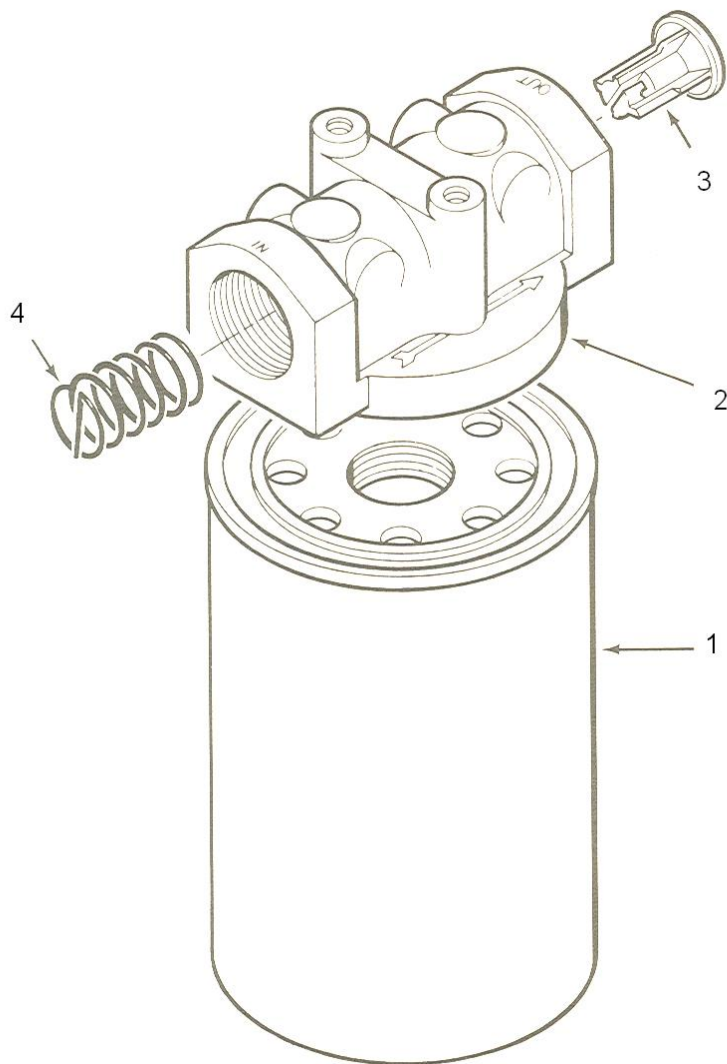


Note: Drawing shown with Flange Mount (Part 11) actual Pump has 4-Bolt Pad Mount (see parts list next page)

MODEL NUMBER	P2500B(599SPL)AXHK25-62AHK25-1(CHA)
DESCRIPTION	PUMP TYPE I SHAFT

Item Number On Exploded View	Description	Order This Part Number	Quantity Per Unit
1	SPECIAL SEAL	280-1774-935	1
2	RETAINER RING	GZ-0961-1	1
3	PUMP SHAFT SEAL	W62-26-10	1
4	O'RING	K-2995-47	1
5	SHAFT KEY	W09-44	1
6	PUMP SHAFT	TB-0024-1	1
7	TAPER BEARING	W015-7	2
8	BEARING SPACER	FA-0558	1
9	SHAFT SPACER	XZ-0558-2	1
10	SNAP RING	W86-100	1
11	TYPE III PAD MOUNT (SEC)	LA-0575-3	1
12	CHECK VALVE	L-0280-K	2
13	SHAFT BUSHING	ZQ-1909	3
14	ROLL PIN	W004-19	3
15	ROLLER BEARING	R-0921	8
16	THRUST PLATE	X-0947-TC	4
17	GEAR HOUSING GASKET SEAL	TA-2995-244	4
18	GEAR HOUSING 2-1/2"	LZ-0577-25-5	1
19	GEAR SET 2-1/2"	JZ-0996L-25	1
20	GEAR SPACER 1-1/8"	SZ-0408-9	1
21	BEARING CARRIER (BC)	JA-0576	1
22	CONNECTING SHAFT	SZ-0022	1
23	GEAR SPACER 1-1/8"	SZ-0408-9	1
24	THREADED ROD	3/8"-16	1
25	LOCK NUT	W78-05	1
26	GEAR HOUSING 2-1/2"	LZ-0577-25-5	1
27	GEAR SET 2-1/2"	JZ-0996L-25	1
28	PORT END COVER (PEC)	QZ-0592	1
29	WASHER 5/8"	W033-2	4
30	TIE BOLT 12-1/2"	ZD-0391-125	2
31	TIE BOLT 16"	ZD-0391-16	2
32	HEX NUT 5/8"-11	W3-65	4

Hydraulic Filter



1) Filter Element 400-1-319

2) Filter Head 400-1-319A (when ordering this part # items 3,4 are included)

Fertilizer and Lime Spreader Pressure Settings for Spinners

1) Checking Pressure

- A) Run unit empty at ordinary operating speed (engine RPM's) for approximately 10 minutes. This allows oil to reach operating temperatures.**
- B) Shut Tractor Hydraulics off and install pressure gauge into "CF" port on flow control valve.
(Refer to hydraulic flow control valve drawing – page?)**
- C) Set flow control valve on 10.**
- D) Restart engine**
- E) With Hydraulics engaged, increase tractor engine RPM's to ordinary operating speed.**
- F) Pressure gauge should read 2000 PSI. If not adjust pressure as outlined below.**

Caution: When checking pressure, never allow tractor to run over a few seconds with pump running and gauge installed in line. Once pressure reading is taken disengage hydraulics immediately.

2) Adjusting Hydraulic Flow Control Valve Pressure:

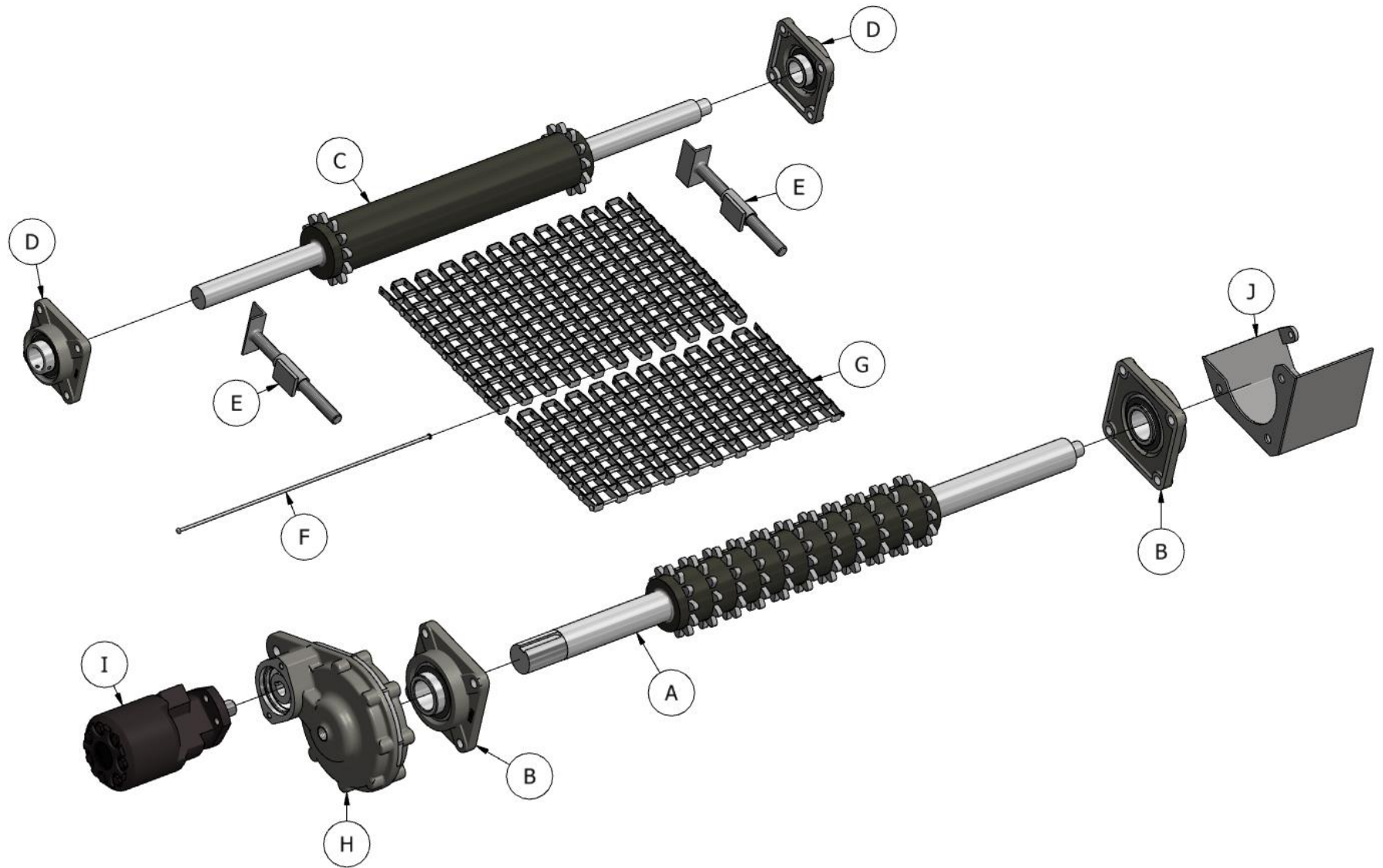
- A) Remove cap nut on flow control valve (located on top of valve)**
- B) Using a 5/16" Allen wrench turn adjustment screw "IN" to increase pressure or "OUT" to decrease pressure.**
- C) Turn adjustable screw on half turn, and then check pressure setting as outlined above.**
- D) Continue this procedure until pressure gauge reads 2000 PSI.**

NOTE: If unable to obtain 2000 PSI contact your local dealer or Chandler Equipment Service Department at 1-800-243-3319

Section 10

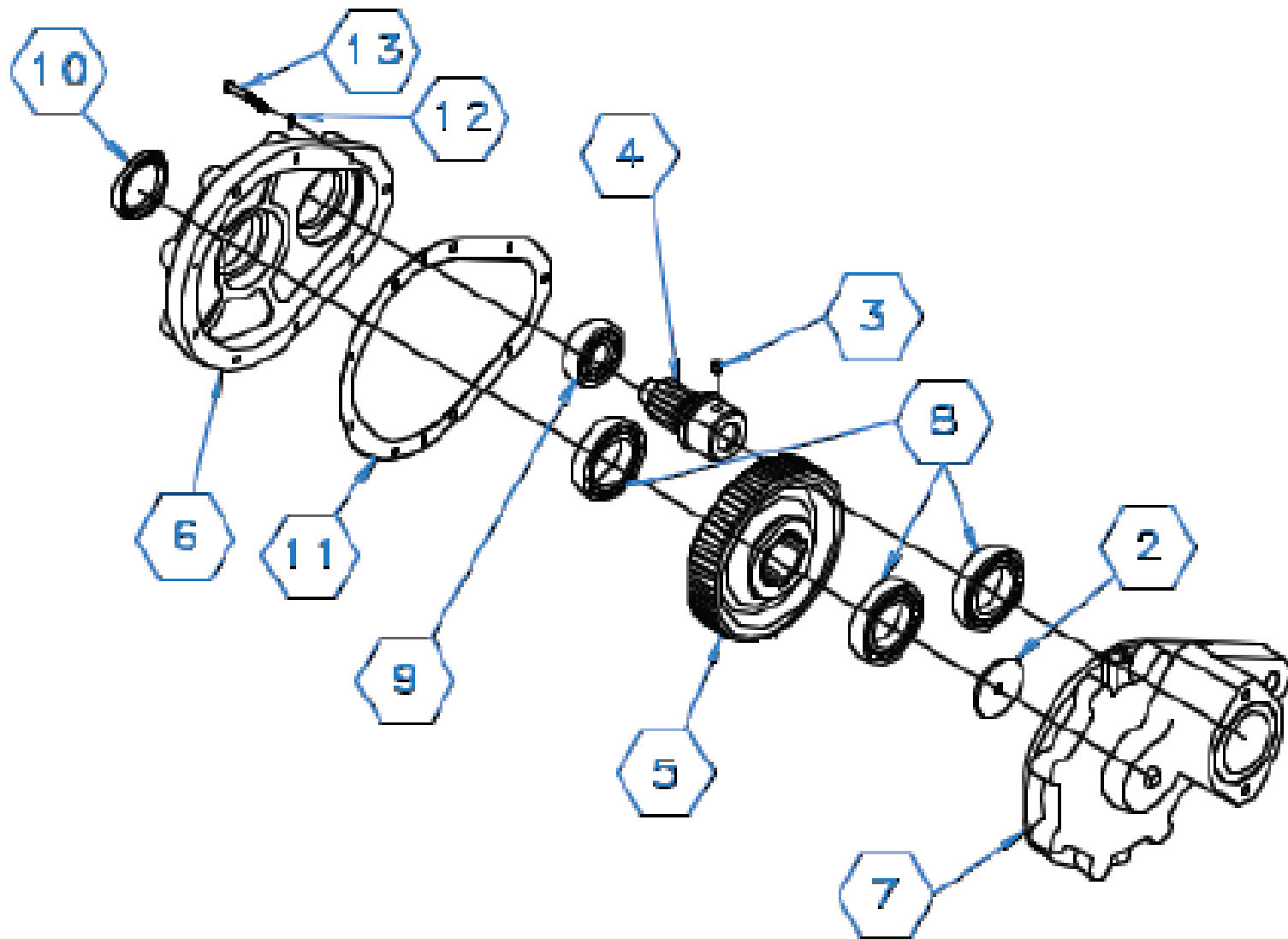
Hydraulic Conveyor Drive

Conveyor Assembly



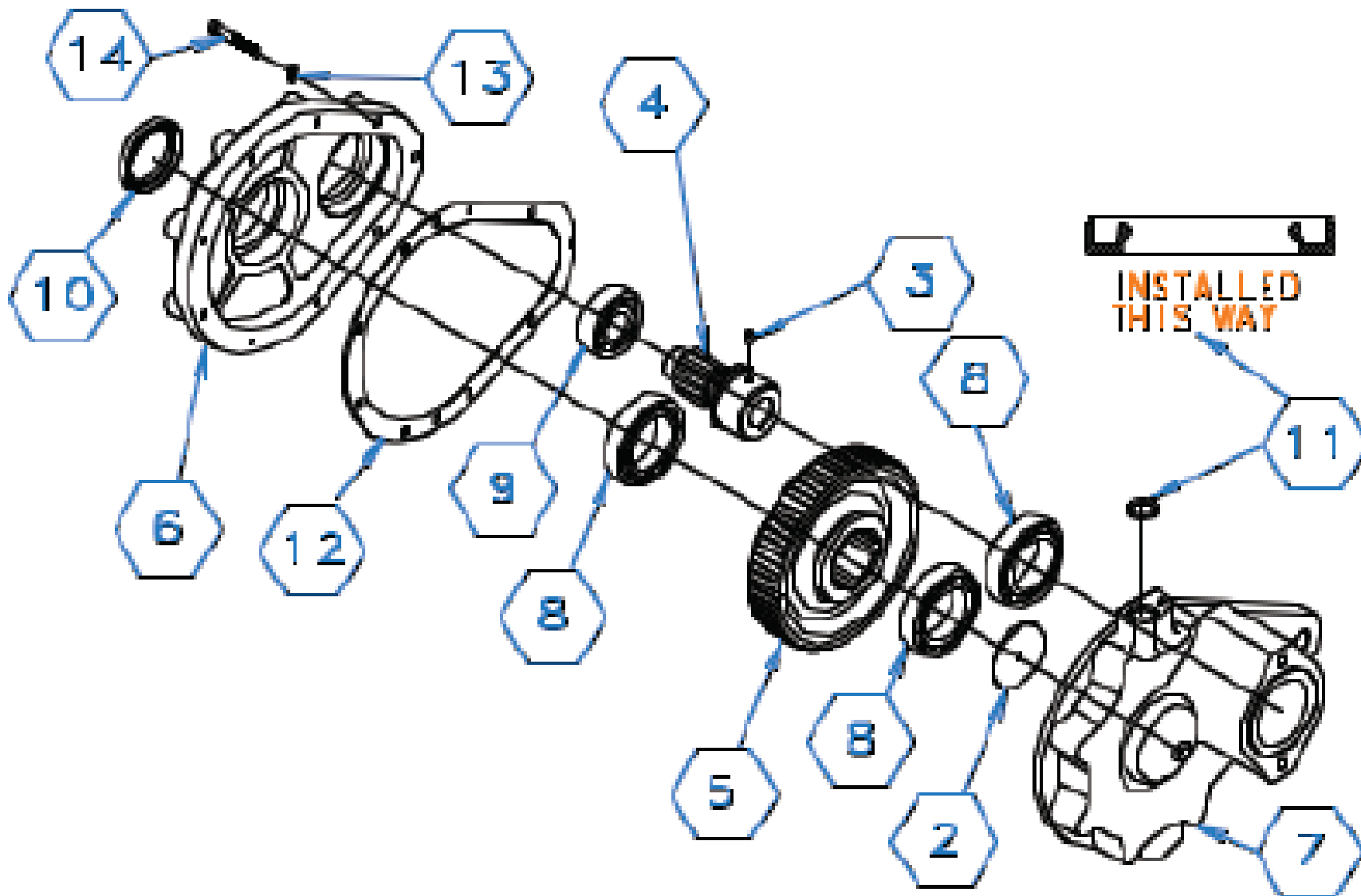
Hydraulic Conveyor Drive – Parts List

Part #	Description
A) HWC-R-1634	16” Rear Roller Assembly
HWC-R-2034	20” Rear Roller Assembly
HWC-R-2434	24” Rear Roller Assembly
B) UCF-211-32	Flange Bearing
C) GWC-F-1634	16” Front Roller Assembly
GWC-F-2034	20” Front Roller Assembly
GWC-F-2434	24” Front Roller Assembly
GWC-F-1634A	16” Front Roller Assembly for Rate Sensor
GWC-F-2034A	20” Front Roller Assembly for Rate Sensor
GWC-F-2434A	24” Front Roller Assembly for Rate Sensor
D) UCF-208-24	Flange Bearing
E) 300-FT-008	Roller Adjustment Rod
F) 500-3-306	Connecting Pin - 16"
500-3-308	Connecting Pin - 20"
500-3-309	Connecting Pin - 24"
G) 500-3-301	Mesh Type Chain - 16"
500-3-303	Mesh Type Chain - 20"
500-3-304	Mesh Type Chain - 24"
H) 100-R-1-01	Gear Case - Single
100-R-2-01	Gear Case - Twin
100-R-1-01A	Gear Case - Single with Rate Sensor Port
100-R-2-01A	Gear Case - Twin with Rate Sensor Port
I) 400-R-106	Hydraulic Motor - MB18 (Single Gear Case)
400-R-104	Hydraulic Motor - MB12 (Twin Gear Case)
J) 300-FT-044	Encoder Mounting Bracket



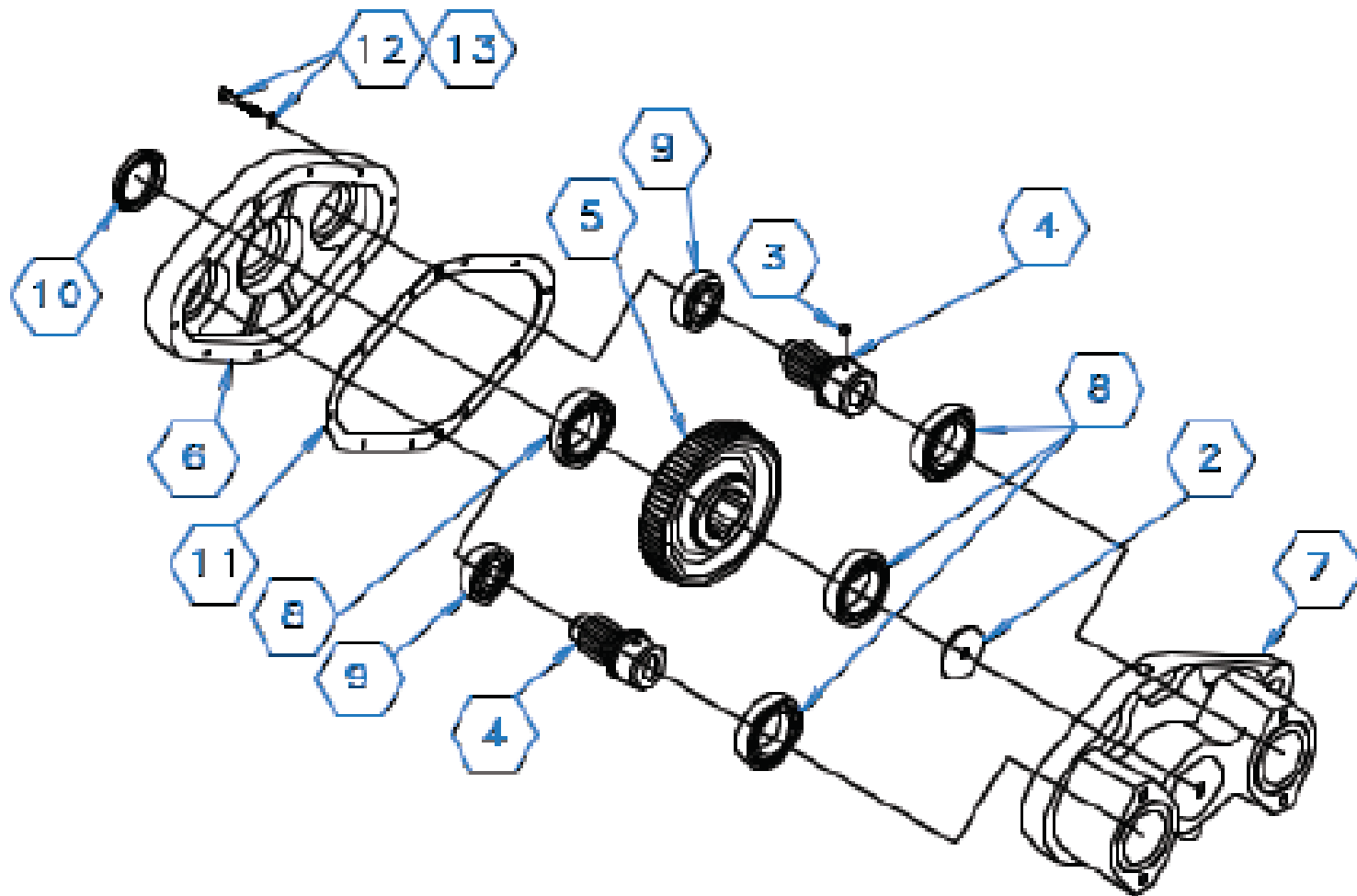
Rawson Single Gear Case

<u>Part #</u>	<u>Description</u>
1) 100-R-1-12A	Plug Kit
2) N/A	Washer
3) N/A	Plug - Delrin (comes installed in pinion gear)
4) 100-R-1-08	Pinion Gear - 11 Tooth
5) 100-R-1-07	Drive Gear 67 - Tooth
6) 100-R-1-09	Inboard Housing - Single
7) 100-R-1-10	Outboard Housing - Single
8) 100-R-1-03	Output Bearing - 50mm
9) 100-R-1-04	Pinion Bearing -25mm
10) 100-R-1-05	Oil Seal
11) 100-R-1-06	Gasket – Single
12) 100-R-1-13	Washer - 5/16" Lock
13) 100-R-1-14	Cap Screw - 5/16" x 1 1/2"
14) 100-R-1-11	Key - 1/2" (not shown)



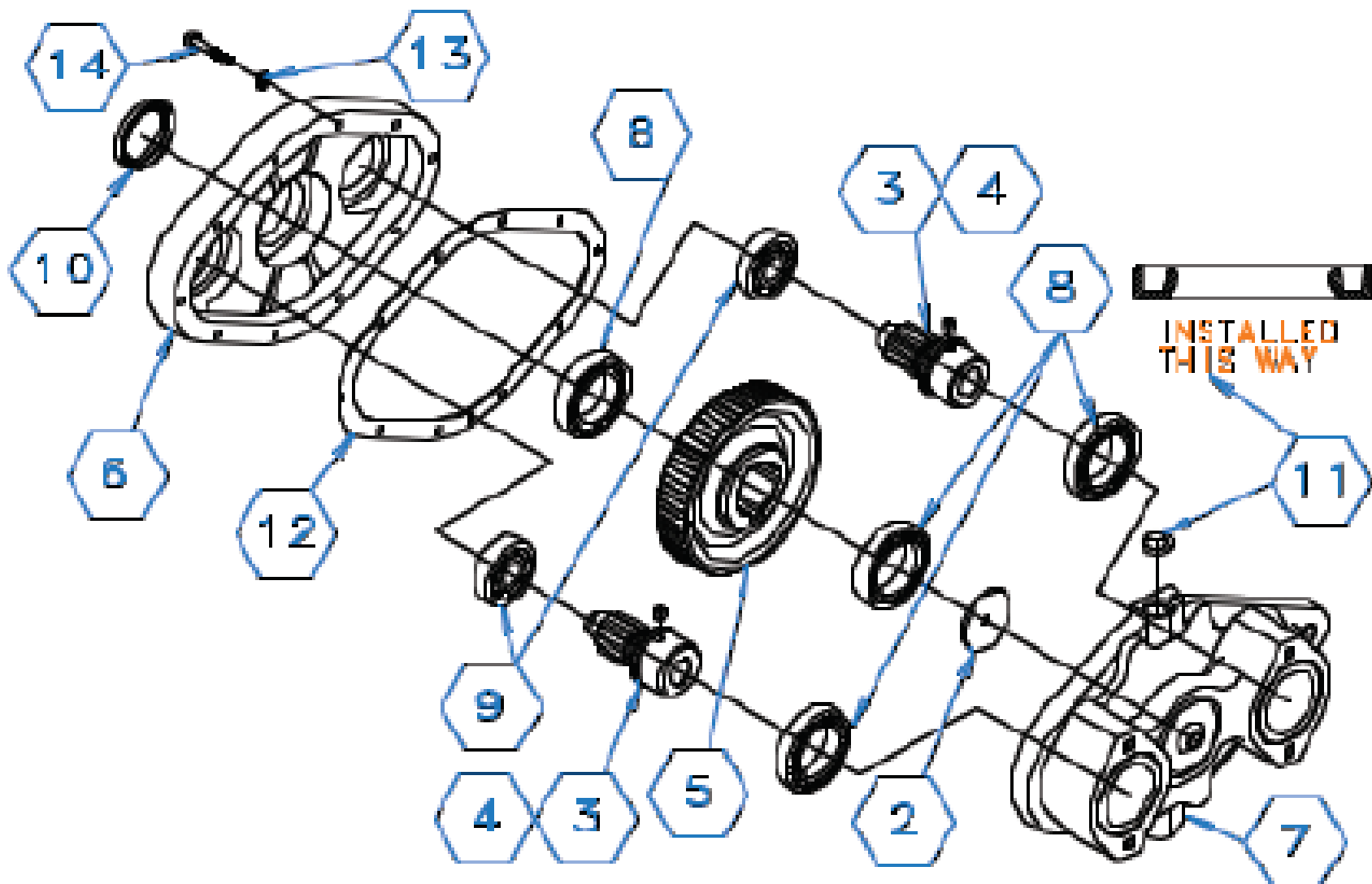
Rawson Single Gear Case with Sensor Port

Part #	Description
1) 100-R-1-12A	Plug Kit
2) N/A	Washer
3) N/A	Plug - Delrin (comes installed in pinion gear)
4) 100-R-1-08	Pinion Gear - 11 Tooth
5) 100-R-1-07	Drive Gear 67 - Tooth
6) 100-R-1-09	Inboard Housing - Single
7) 100-R-1-10A - LH	Outboard Housing - Single w/ Sensor Port LH
8) 100-R-1-03	Output Bearing - 50mm
9) 100-R-1-04	Pinion Bearing -25mm
10) 100-R-1-05	Oil Seal
11) 100-R-1-15	Oil Seal - Sensor Port
12) 100-R-1-06	Gasket
13) 100-R-1-13	Washer - 5/16" Lock
14) 100-R-1-14	Cap Screw - 5/16" x 1 1/2"
15) 100-R-1-11	Key - 1/2" (not shown)



Rawson Twin Gear Case

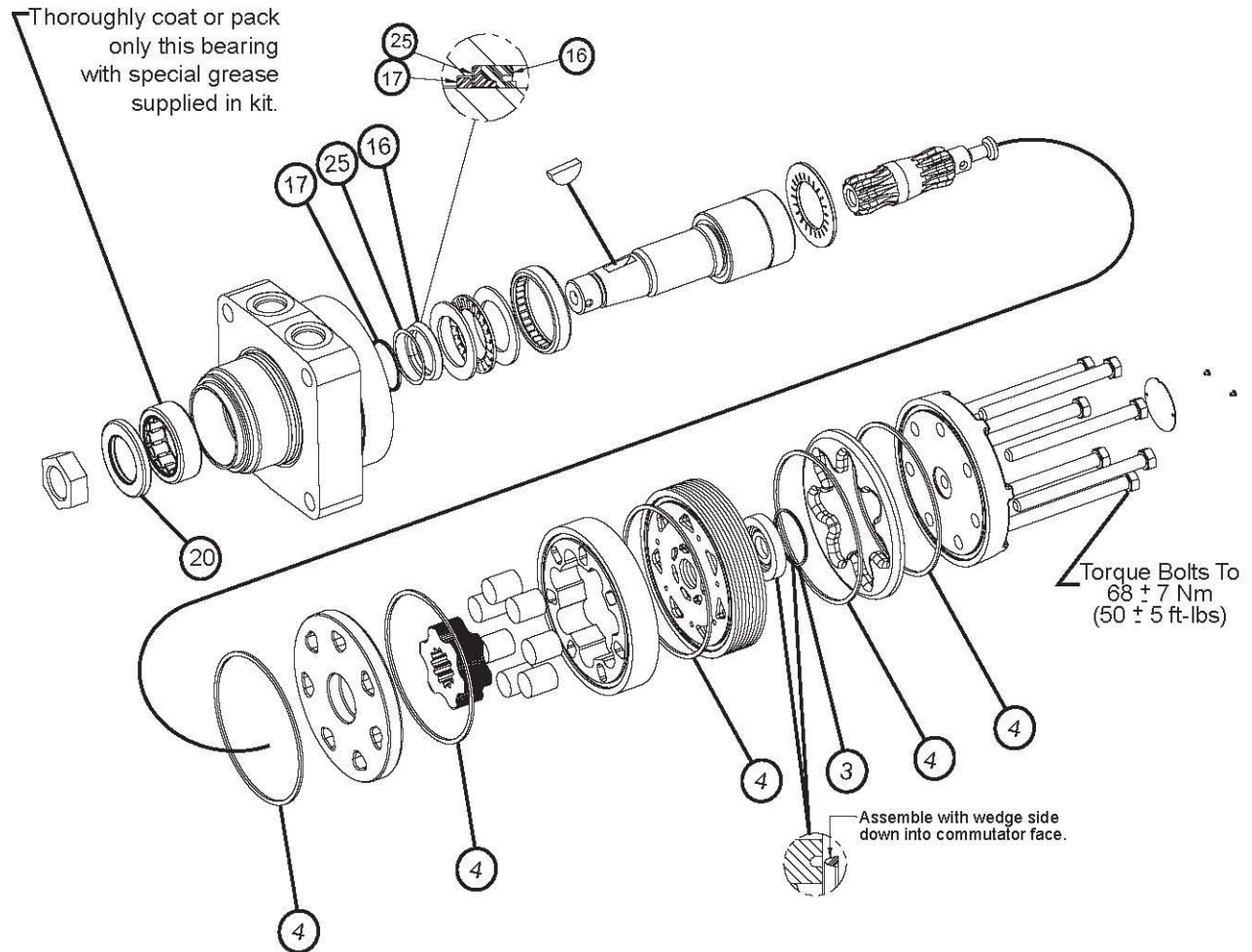
Part #	Description
1) 100-R-1-12A	Plug Kit
2) N/A	Washer
3) N/A	Plug - Delrin (comes installed in pinion gear)
4) 100-R-1-08	Pinion Gear - 11 Tooth
5) 100-R-1-07	Drive Gear 67 - Tooth
6) 100-R-2-02	Inboard Housing - Twin
7) 100-R-2-03	Outboard Housing - Twin
8) 100-R-1-03	Output Bearing - 50mm
9) 100-R-1-04	Pinion Bearing -25mm
10) 100-R-1-05	Oil Seal
11) 100-R-2-06	Gasket - Twin
12) 100-R-1-13	Washer - 5/16" Lock
13) 100-R-1-14	Cap Screw - 5/16" x 1 1/2"
14) 100-R-1-11	Key - 1/2" (not shown)



Rawson Twin Gear Case with Sensor Port

Part #	Description
1) 100-R-1-12A	Plug Kit
2) N/A	Washer
3) N/A	Plug - Delrin (comes installed in pinion gear)
4) 100-R-1-08	Pinion Gear - 11 Tooth
5) 100-R-1-07	Drive Gear 67 - Tooth
6) 100-R-2-02	Inboard Housing - Twin
7) 100-R-2-03A - LH	Outboard Housing - Twin w/ Sensor Port LH
8) 100-R-1-03	Output Bearing - 50mm
9) 100-R-1-04	Pinion Bearing -25mm
10) 100-R-1-05	Oil Seal
11) 100-R-1-16	Oil Seal - Sensor Port
12) 100-R-2-06	Gasket - Twin
13) 100-R-1-13	Washer - 5/16" Lock
14) 100-R-1-14	Cap Screw - 5/16" x 1 1/2"
15) 100-R-1-11	Key - 1/2" (not shown)

Conveyor Motor



Description

- 1) MB180102AAAA Motor - Single Gear Case
- 4) MB120102AAAA Motor - Tandem Gear Case
- 5) MB Seal Kit (includes- 3, 4, 16, 17, 20, 25)
- 6) Motor Shaft - MB019002

Part

- 400-R-106
- 400-R-104
- 400-R-109
- 400-R-111

***** When Ordering these parts have serial number available to insure proper parts**

Section 11

Basic Set-Up & Operation – Control System

Basic Operation of Pull Type Spreader

- 1) Make sure that flow control valve is adjusted properly for spinner speed.
- 2) Raise gate for desired rate of application.
- 3) Adjust material divider accordingly.
- 4) Refer to operator's manual for your rate controller on how to operate and calibrate controller.
- 5) Be sure that the correct spreader constant is entered into rate controller.
- 6) Engage Hydraulic Remote/PTO control, once engaged, spinners should begin turning.
- 7) Conduct a spread pattern pan test, and make any required adjustments.
- 8) You are now ready to spread.
- 9) Use the following guidelines if any adjustments are necessary.

Setting Spinner Speed

We recommend a spinner speed of **650–700 RPM** as this unit is designed for a 50ft. spread pattern for fertilizer and a 30ft. pattern for lime. This spreader is equipped with a flow control valve to adjust spinner speed and to maintain a constant speed after your tractor reaches proper PTO RPM's. Generally the flow control valve will need to set at about 6, however due to machining tolerances, this setting will vary from one spreader to the next.

Spinner speed should be set following these guidelines:

- 1) Rev engine speed to proper PTO RPM (540/1000).
 - a. Before starting engine be sure that there is no material or obstructions in bed or on spinners.
- 2) Take a hand tach reading on spinner shaft.
 - a. Spinners shafts are center drilled underneath the spinners to accept a hand tach.
 - b. If unit has a **control system** with spinner speed sensor and spinner speed read out, this can be used in place of hand tach reading.
- 3) Adjust lever on flow control valve until desired speed is reached - the higher the indicator number the faster the spinners should run.
- 4) After getting correct spinner speed, increase tractor engine RPMs to proper PTO RPM (540/1000) - spinner speed should remain within reason of the desired speed.
- 5) If spinner speed does not remain constant within reason, disassemble flow control valve and clean parts as outlined under **Troubleshooting Procedures**, Problem I, investigations **B** and **C**.

NOTE: In some instances, due to density of materials, a faster or slower spinner speed may be desired. If so, follow above procedures and set speed accordingly.

CAUTION: Due to normal wear, the setting on the flow control valve may need to be set higher as time goes by. Check spinner speed often.

CAUTION: Spinner speed is one of the most important factors in achieving a proper spread pattern and must be set properly and checked regularly.

NOTE: If the spinners are running too fast you will tend to leave a thin streak behind the center of the tractor, if they are too slow it will leave a heavy streak.

Record Valve Setting _____

Setting Material Divider

Material Divider settings are very important to the accuracy of the spread pattern. Improper divider settings will cause light or heavy streaks in the field.

Material Divider should be set following these guidelines:

- 1) Material Divider has an adjustment rod at the rear of the divider. Moving the divider “IN” or “OUT” will change the spread pattern.
- 2) Moving the Material Divider “OUT” will cause the spread pattern to be heavy on the outside of the spread swath.
- 3) Moving the Material Divider “IN” will cause the spread pattern to be heavy in the middle of the spread swath.

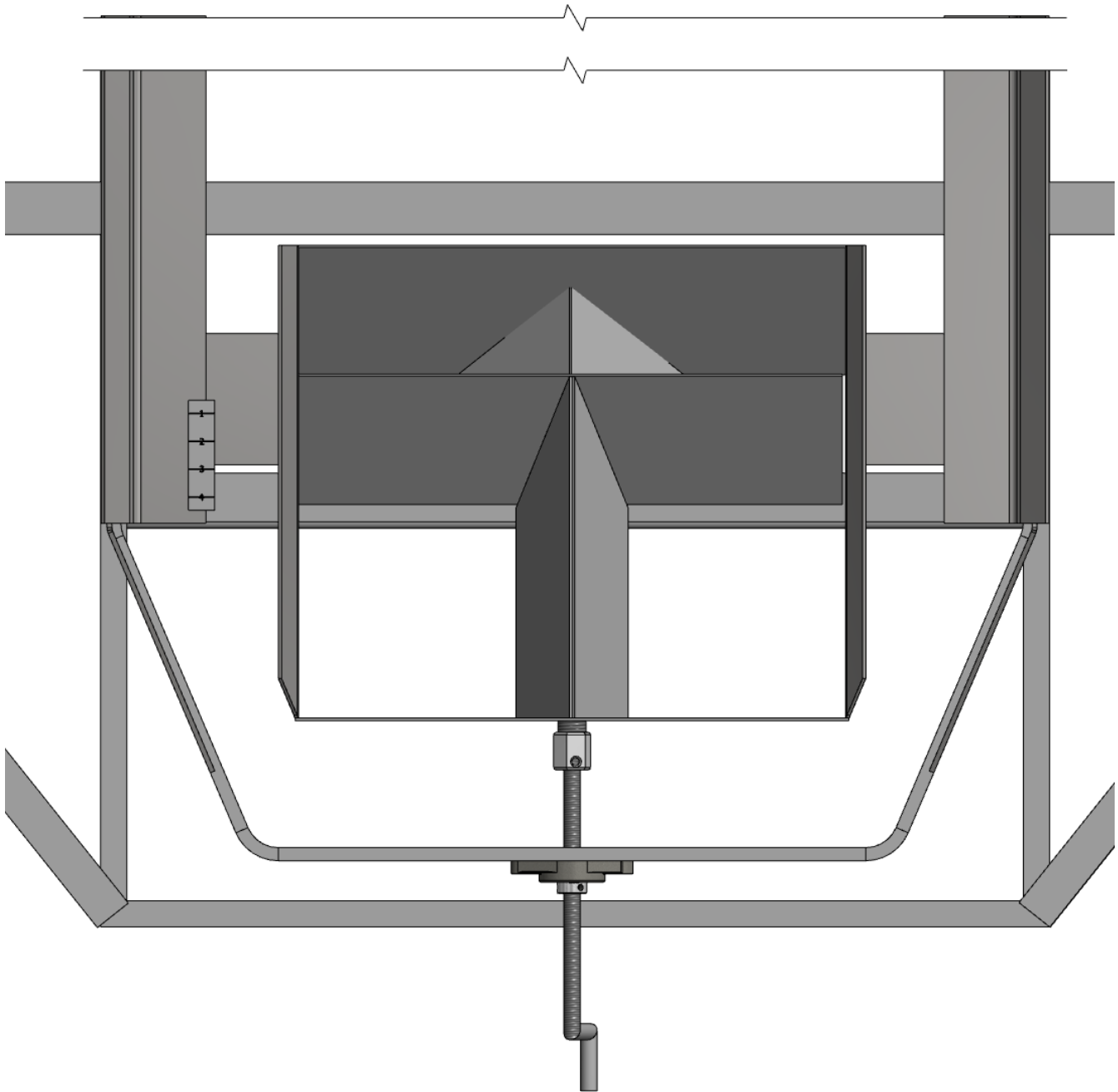
Material Divider Settings:

<u>Material</u>	<u>Setting</u>	<u>Pattern</u>
Lime	1-1/2"	30'
Blended Fertilizer	2-1/2"	50'
Ammonia Nitrate	3-1/4"	50'
Urea	3-3/4"	50'

NOTE: These are recommended settings and will vary according to material weight.

NOTE: Chandler Equipment Co. recommends each spreader to be tested, using a pan test kit, every season to ensure proper spread pattern.

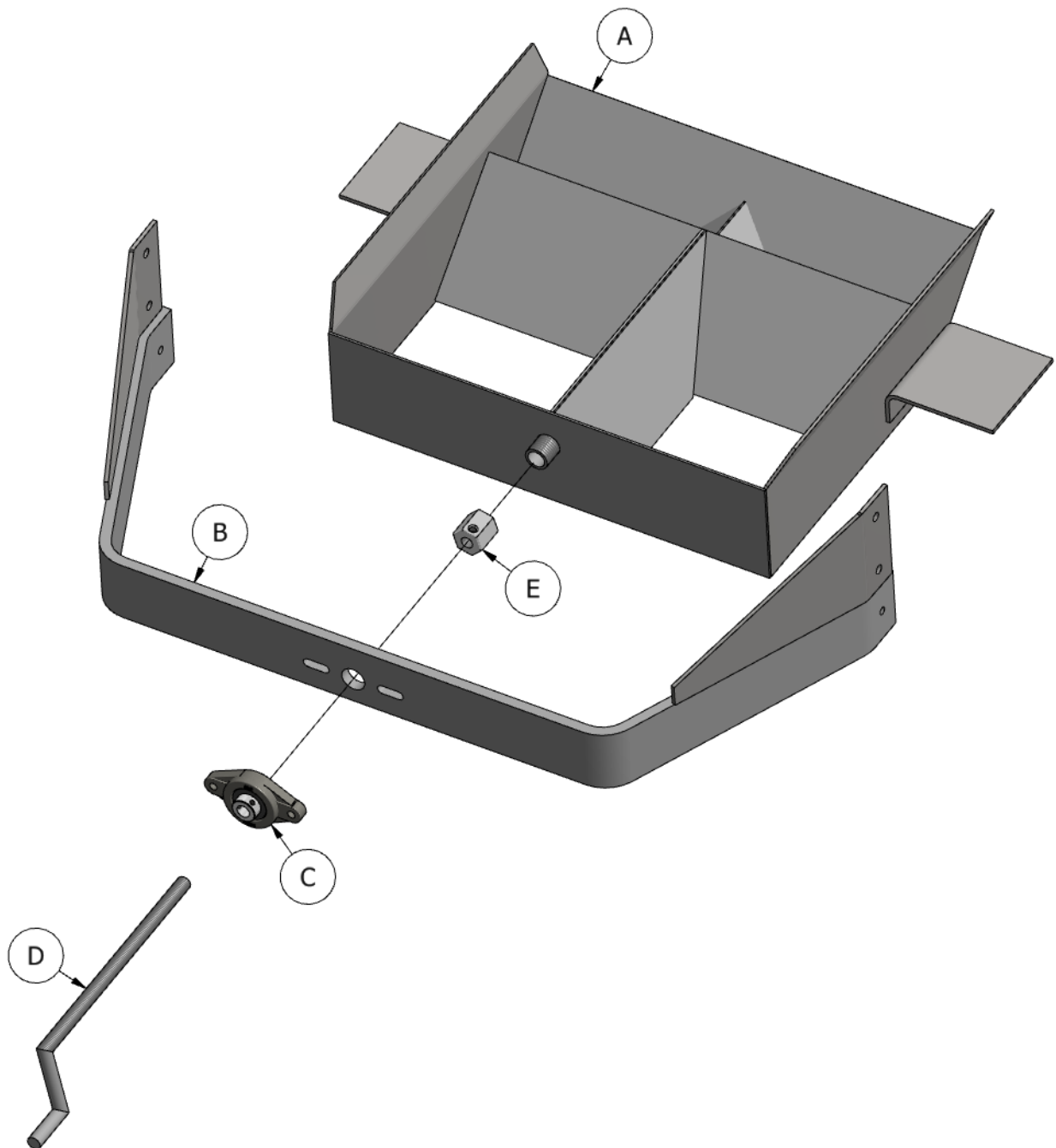
Flow Divider Assembly Overhead View



Section 12

Flow Divider Assembly

Flow Divider Exploded View



Flow Divider – Parts List

	Part #	Description
A	300-FT-010	Flow Divider Assembly S.S. (Specify Floor Width When Ordering)
B)	300-FT-011	Flow Divider Bar S.S.
C)	UCFL-204-10	5/8" Flange Bearing
D)	300-FT-012	Flow Divider Adjustment Rod
E)	300-FT-013	Flow Divider Hex Nut w/ Grease Zerk
*	300-FT-019	Flow Divider Gauge

***Not Shown**

Section 13

Maintenance & Troubleshooting

Extending the Life of Your Spreader through Proper Maintenance

We at Chandler Equipment Co. are pleased that you have selected our equipment. We feel, as we are sure you do, with the high cost of fertilizers, repairs, and parts, that proper maintenance of equipment should be a high priority.

This unit is a major investment and must be maintained properly for years of excellent service. Listed below are some of the areas that require constant attention:

- 1) A Chandler Fertilizer Spreader comes standard with a **STAINLESS STEEL MESH TYPE CHAIN**. Due to the construction of this chain it will stretch approximately 16 inches in the first few weeks of service. Adjustment can be made on your front roller to take care of the first few inches of stretch. Once the adjustment is used, back off on the adjustment rods and remove as much chain as possible. Removal of chain will probably be required a couple of times. After the initial stretch has been taken out, only occasional adjustment of the chain will be necessary. Adjust chain tension rods the same on both sides. When properly adjusted, the chain should just clear the cross members of spreader frame. Be sure to keep build up cleaned out from under the mesh chain.
- 2) Be sure to check **HYDRAULIC OIL** level daily. Located on the front of the oil tank is an oil temperature/ oil level gauge. The oil level should be maintained within 1 inch of the black line at the top of the gauge. Never fill the tank past the black line or allow oil level to get below the red line as this could damage the hydraulic system of your spreader.
- 3) Grease bearings and U-joints daily when unit is in use.
- 4) Maintain proper lubricant level in gear case. At first sign of an oil seal leak, replace immediately.
- 5) Spreader body should be washed down occasionally and especially when not to be used for an extended period of time. Wash with 4 parts fuel oil and 1 part 10 W motor oil.
- 6) Be sure to run the material divider throughout its entire adjustment range daily and keep adjustment rod greased. Doing so will maintain proper adjustment function.
- 7) Spinner Assembly Maintenance
 - A) Spinner Blades
 - The spinner blades are a wearable item and must be checked regularly for wear. If spinner blades are worn, bent or have holes, replace immediately for proper spread pattern.
 - B) Spinner Disc
 - Check spinner disc daily for wear. If spinner disc are worn or do not spin true, replace immediately for proper spread pattern.
 - C) Spinner Bearings
 - Check spinner bearings daily for wear and movement. Replace spinner bearing immediately if there is any movement in bearing. This can cause serious damage to spinner disc and motors. **DO NOT OVER GREASE**

D) Spinner Motors

- Check spinner motor seals daily for leaks. If spinner motor seal is leaking replace immediately. This could cause serious damage to hydraulic system and spinner motor.

8) Material Divider Maintenance

- A) It is necessary for the material divider and spinners to be clean at all times.
- B) Where excessive moisture exists it may be necessary to clean the material divider and spinners while in the field to achieve the best possible spread pattern.
- C) The material divider plays an important part in developing the proper spread pattern. This divider is adjustable "in" and "out".
- D) Proper adjustment is critical. Be sure to run the material divider throughout its entire adjustment range daily and keep adjustment rod greased. Doing so will maintain proper adjustment function.

Troubleshooting Procedures

The following investigation recommendations are given you to assist in simple repairs. To effectively troubleshoot these areas there are only two (2) special instruments that will probably not be found in a mechanic's tool box - these are - 0-1500 RPM hand tach and a 0-3000 PSI pressure gauge. These items can normally be purchased locally but if you have problems obtaining these items they can be purchased from Chandler Equipment Co.

Description	Part Number
Digital Hand Tach (0-1500 RPM)	300-FT-033
Hydraulic Pressure Gauge (0-3000 PSI)	400-1-351

The trouble shooting program outlined following has been expressed as simply as possible through the use of a manual but if any questions arise please do not hesitate to call. If, after all investigations have been carried out relating to your problem, and the problem remains, contact Chandler Equipment Co.

Problem I: Spinner speed very slow even when not spreading or not at all.

Recommended Investigation:

A) Basic Checks

- 1) Check to be sure indicator on flow control valve is located in its proper location (Refer to spinner speed and spread pattern instructions).
- 2) Check to be sure there is sufficient oil in tank and there is no restriction of any manner in line allowing oil flow from bottom of tank to pump.
- 3) Check spinner shaft bearings for proper lubrication and wear.
- 4) Check that keyways are properly in place on motor shafts.

If everything is in order proceed to investigation procedure **B**.

- B) Remove spool cap (3-7) from flow control valve. Remove other spool cap. From either side, push out spool and spring. Clean all items removed thoroughly and blow dry with air hose. Blow out housing areas thoroughly from which parts were removed.

Reassembly:

- 1) Replace spool from upper side of housing making sure hollow end goes in first. Spool should slide freely.
- 2) Insert spring from lower side of housing. Make sure end of spring goes up in hollow part of spool.
- 3) Replace lower spool cap making sure spring sits in recessed area of spool cap.
- 4) Replace upper spool cap.

If problem has not been eliminated, continue to investigation procedure **C**.

C) Remove retaining ring from flow control valve.

- 1) With punch and hammer, knock lever spool from valve body. **CAUTION** - Be sure to mark in some manner top of spool before removing.
- 2) Clean thoroughly, area of housing from which lever spool was removed.
- 3) Clean thoroughly the lever spool outer area and blow out all holes with high pressure air hose.

Reassemble as taken apart, making sure, spool is replaced with area you marked in the same position.

If problem has not been eliminated, continue to investigation procedure **D**.

NOTE: The following investigation should be carried out very carefully and exactly as outlined for there is no relief system available for this procedure and if pump is working properly excessive pressure will build up immediately and cause damage if instructions are not carried out precisely.

D) Setting pressure for spinners.

- 1) Run unit empty at ordinary operating speed (engine RPM's) for approximately 10 minutes, to allow hydraulic oil to reach operating temperatures.
- 2) Disengage PTO and install pressure gauge into "CF" port on flow control valve. (Refer to hydraulic flow control valve drawing – page 3-7)
- 3) Set lever on flow control valve on 10.
- 4) Engage P.T.O. Rev truck engine up to approximately 2000 RPM.
- 5) Slowly release clutch while watching pressure gauge.
- 6) Pressure gauge should read 2000 PSI.

If not, adjust pressure in accordance to investigation procedure **E**.

E) Adjusting Hydraulic Flow Control Valve Pressure.

- 1) Remove cap nut on flow control valve (located on top of valve)
- 2) Using a 5/16" Allen wrench turn adjustment screw "IN" to increase pressure or "OUT" to decrease pressure.
- 3) Turn adjustable screw on half turn, and then check pressure setting as outlined above.
 - i. Be sure to count number of turns you adjust screw.
- 4) Continue this procedure until pressure gauge reads 2000 PSI.
 - i. If a 2000 PSI reading is reached on the gauge replace relief valve cover nut.
 - ii. If screwing in on the relief adjusting screw had none or little effect on the pressure, back adjusting screw out to its original position.

NOTE: If unable to obtain 2000 PSI contact your local dealer or Chandler Equipment Service Department at 1-800-243-3319

Problem II: Spinners will not throw material far enough.

Recommended Investigation:

- A) Verify proper spinner speed.
- B) Check hydraulic pressure relief. (See Problem I – Investigation **D**)
- C) Check that spinner blade bolts are tight and properly in place.
- D) Check that the spinner discs are securely fastened.

Problem III: Improper spread pattern.

Recommended Investigation:

- A) Check setting of material divider.
- B) Check spinner disc and blades for wear.
 - a. Replace as needed.
- C) Check spinner speed.

NOTE: If problems still persist or you have additional issues please contact your local dealer or Chandler Equipment Service Department at 1-800-243-3319

Section 14

Spread Pattern

Spread Pattern Adjustment

We at Chandler Equipment Co. recommend performing a spread pattern pan test prior to each spreading season, after any spreader maintenance or modification, and periodically throughout the spreading season. A spread pattern test must be performed for each product to be applied to insure proper material application.

NOTE: The spinner assembly has **NOT** been adjusted at the factory. Before spreading, a spread pattern test must be performed to properly adjust spreader and obtain optimal spread pattern.

NOTICE: CHANDLER EQUIPMENT CO. WILL NOT BE HELD LIABLE FOR MISAPPLIED MATERIAL DUE TO AN IMPROPERLY ADJUSTED SPREADER.

WARNING: Use extreme caution while working around the spreader. Any contact with the spinners or other moving parts can cause injury. Do attempt to adjust any part of the spreader while the machinery is in use or moving. Wear eye protection and avoid discharge from spinners. Do not ride on the spreader while in motion.

The spread pattern is affected by several factors, including but limited to the following:

- A) Spinner speed.
- B) Material properties.
 - a. Weight per cubic foot.
 - b. Granular size and distribution.
 - c. Flow characteristics.
- C) Speed of bed chain.
- D) Position material is dropped on disc.
- E) Division of material between discs.
- F) Position of spinner blades on the spinner disc.
- G) Cleanliness of spinner assembly.
- H) Wear on spinner assembly.
- I) Height of spreader.
- J) Weather (wind, humidity, etc.)
- K) Spread width.

As these factors can vary from one job to the next, a trial and error pan test must be completed to determine the adjustments that fit your needs the best. As a result, numerous pan tests may be required to obtain the spread pattern and swath width you desire. The following instructions are given as guidelines to adjust your spreader and outline the effect of each adjustment on the spread pattern.

Spinner Assembly

Spinner speed is adjustable as outlined above, and is a major factor in a proper spread pattern. The best spinner speed will depend on the material being spread, and only obtainable by way of testing.

Material properties play an important role in properly adjusting the spinner speed for the maximum spread pattern width. The particle size and distribution can greatly affect the spread width. This can vary from 25 feet for very finely ground dry lime and up to 70 feet or more for extremely large pelletized fertilizer. For each material there is an optimal spinner speed. In other words, there is a spinner speed that results in the best spread pattern and width.

Setting the spinner speed above the optimal speed will not create a wider pattern; instead it will result in a poor spread pattern. By setting the spinner speed to high, there will be a heavy deposit of material directly behind the tractor as a result of the breakdown of material. The maximum spinner speed will be lower for finely ground material, and can be much higher for coarser materials. Generally the optimal spinner speed will be somewhere between 650 and 750 rpm for ordinary materials. Once the initial testing is completed, testing should be repeated at the beginning of each spreading season, anytime maintenance or adjustments are made to the spread assembly, and periodically throughout the season as components can wear and change spreading characteristics.

NOTE: Spinner discs and blades must be kept clean and maintained to ensure a proper spread pattern. A small build-up of material can have adverse effects on the spread pattern. Rusted, rough, bent, or worn blades and discs will produce a poor spread pattern.

Material Divider Assembly

As spinner speed is an important factor in a proper spread pattern, the position of the material divider is equally as effective in acquiring an optimal spread pattern. The position of the divider varies from one product to the next, and best determined by testing. However, there are some guidelines listed below on divider setting.

When spreading ag lime, be sure to remove the rear section of the divider, and start with the divider set on 1-1/2”.

For most fertilizers, begin with the divider at approximately 2-1/2”.

While spreading, if too much material is applied directly behind, move the divider towards the back of the spreader. If there is more being applied outside of the tractor, adjust the divider towards the front of the spreader.

Spreader Preparation

The spreader to be tested should be properly maintained and in good mechanical working condition in accordance with this manual. All damaged or worn parts should be replaced prior to completing the spread pattern test. Spinner discs, blades, and material divider should be free of any material build-up or rust.

Set the spreader gate according to your application rate. Make sure to check to see if the gate is level and that the indicator reads the actual height of the gate. Fill the hopper with material to be tested and run the spreader so that the material reaches the end of the chain.

Testing Procedure

- Select an area for testing approximately 120' x 400', which has a slope of less than 2 degrees.
- Place a plastic grid into each of the 21 collection pans. Position the 21 pans on 6' centers with the long side parallel to the direction of travel.
- If possible perform test when wind speed is less than 5 MPH. If wind speed is greater than 5 MPH, testing must be completed while spreading parallel to the wind direction.
- Prior to conducting a pan test, be sure to run the spreader and obtain normal operating temperature of the hydraulic oil.
- Before driving across pans, operate the spreader long enough for the rate to level out and spinner speed to remain constant.
- Spreader must be driven over the pans in ONLY ONE DIRECTION.
- Position spreader at the beginning of the course so that the spreader will straddle the center pan. Be sure to set gate for the desired application rate according to this manual.
- Drive the spreader completely through the course at normal operating speeds.

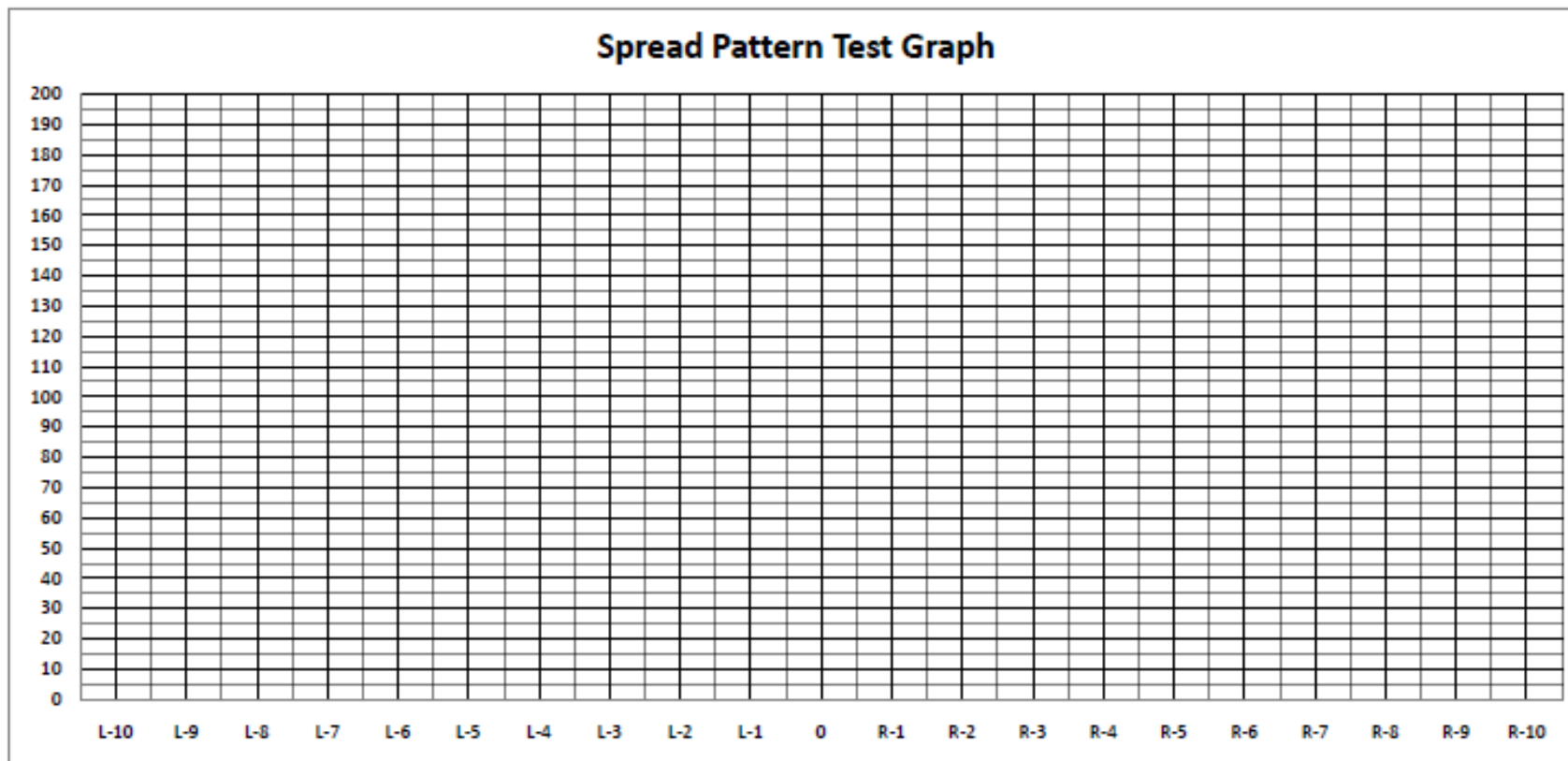
Data Recording

Date _____
 Run No. _____
 No. of Passes _____
 lb./Acre _____
 Test Site _____

Model _____
 Serial No. _____
 Chain Type _____
 Material _____
 Material Density _____ lb./cu.ft.

Gate Setting _____
 Flow Divider Setting _____
 Spinner Speed _____ rpm
 Spinner Valve Setting _____
 Blade Settings L _____ R _____

Spread Width _____ ft.
 Height To Spinners _____ in.
 Wind _____ @ _____ mph
 Driving Method _____
 Pan Spacing _____ ft.



QUALITY TENDERS AND SPREADERS

CHANDLER EQUIPMENT CO.

Gainesville, Georgia 30503 • (770) 536-8891

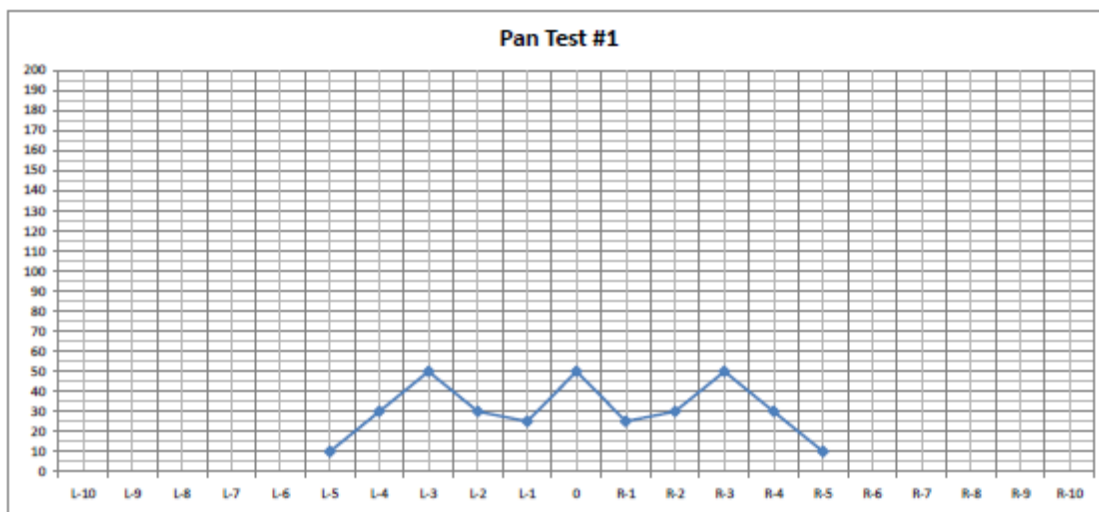
Toll Free 800-243-3319 • Fax (770) 535-1265

www.chandlerequipment.net

Data Recording

Unacceptable Pattern

Date <u>9/1/2010</u>	Model <u>FTL-EKW</u>	Gate Setting <u>2</u>	Spread Width <u>70</u> ft.
Run No. <u>1</u>	Serial No. <u>22647</u>	Flow Divider Setting <u>3.75</u>	Height To Spinners <u> </u> in.
No. of Passes <u>1</u>	Chain Type <u>24" Mesh</u>	Spinner Speed <u>700</u> rpm	Wind <u> </u> @ <u> </u> mph
Ib./Acre <u>200</u>	Material <u>DAP/Pot Ash</u>	Spinner Valve Setting <u> </u>	Driving Method <u> </u>
Test Site <u>Gene Farm</u>	Material Density <u>63</u> lb./cu.ft.	Blade Settings L <u>2</u> R <u>2</u>	Pan Spacing <u>10</u> ft.
Flow Divider <u>8"</u> Center and <u>Sloped</u> Sides			



QUALITY TENDERS AND SPREADERS

HANDLER EQUIPMENT CO.

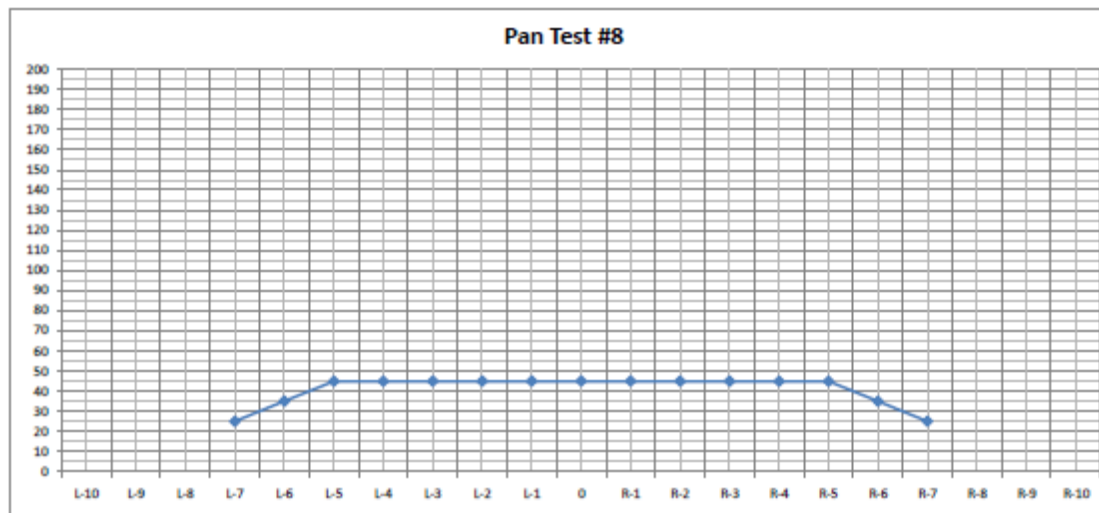
Gainesville, Georgia 30503 • (770) 536-8891

Toll Free 800-243-3319 • Fax (770) 535-1265

www.chandlerequipment.net

Acceptable Pattern

Date <u>9/1/2010</u>	Model <u>FTL-EKW</u>	Gate Setting <u>2</u>	Spread Width <u>80</u> ft.
Run No. <u>8</u>	Serial No. <u>22647</u>	Flow Divider Setting <u>3.75</u>	Height To Spinners <u> </u> in.
No. of Passes <u>1</u>	Chain Type <u>24" Mesh</u>	Spinner Speed <u>700</u> rpm	Wind <u> </u> @ <u> </u> mph
Ib./Acre <u>200</u>	Material <u>DAP/Pot Ash</u>	Spinner Valve Setting <u> </u>	Driving Method <u> </u>
Test Site <u>Gene Farm</u>	Material Density <u>63</u> lb./cu.ft.	Blade Settings L <u>1</u> R <u>1</u>	Pan Spacing <u>6</u> ft.
Flow Divider <u>8 1/2"</u> Center and <u>Sloped</u> Sides			



QUALITY TENDERS AND SPREADERS

HANDLER EQUIPMENT CO.

Gainesville, Georgia 30503 • (770) 536-8891

Toll Free 800-243-3319 • Fax (770) 535-1265

www.chandlerequipment.net

Data Recording

Using the data sheets supplied, document any and all adjustments made to the spreader while conducting the pan test.

Using the funnel, transfer the contents of each catch pan into the corresponding test tube for its position.

NOTE: It is highly recommended to only make ONE adjustment between each test. If more than one adjustment is made it will hard to determine which adjustment is responsible for the change in spread pattern shape.

Once you've obtained a desirable pattern, maximum driving centers can be determined. In order to determine the maximum swath width, locate the points on both the left and right side of the pattern where the amount of material applied is half of the amount at the center of the pattern. The distance between these two points represents the optimal swath width.

If spreading blended fertilizer, a visual inspection of the samples should be conducted in order to determine if the blend within the swath is consistent with the desired blend. If the blend is not consistent, a narrower swath should be used and a new optimal width should be determined.

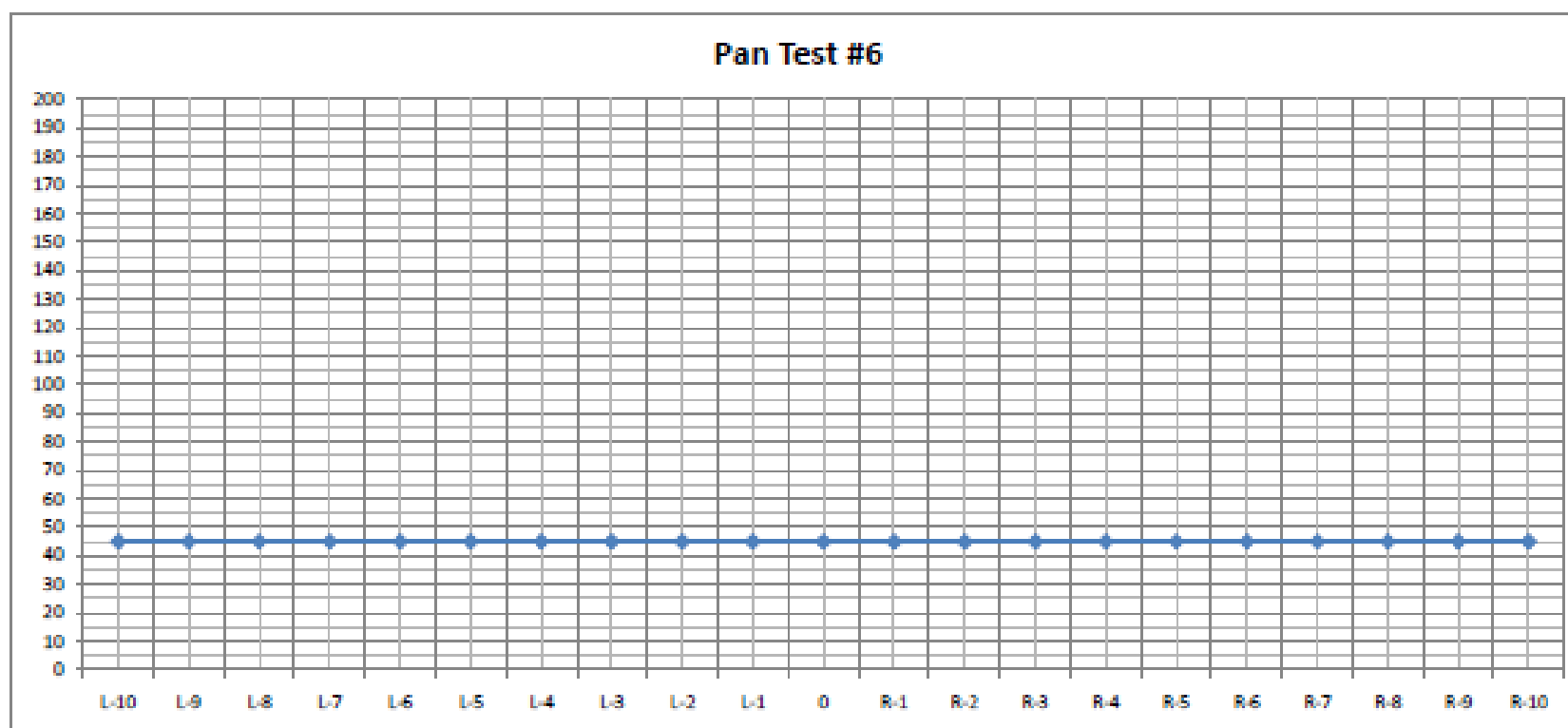
Driving Methods

During initial testing only one pass over the pans is required. Once an optimal swath width is determined, a multiple pass test should be conducted to check the overlap areas of the swath.

There are different types of multiple pass driving methods; however we recommend a 3 pass switch back method. The use of this method amplifies non-symmetrical patterns by blending right side on right and left side on left.

Acceptable Pattern Using a 3 Pass Switchback Driving Method

Date <u>9/1/2010</u>	Model <u>FTL-EXW</u>	Gate Setting <u>2</u>	Spread Width <u>80</u> ft.
Run No. <u>6</u>	Serial No. <u>22647</u>	Flow Divider Setting <u>3.73</u>	Height To Spinners <u> </u> in.
No. of Passes <u>3</u>	Chain Type <u>24" Mesh</u>	Spinner Speed <u>700</u> rpm	Wind <u> </u> @ <u> </u> mph
Ib./Acre <u>200</u>	Material <u>DAP/Pot Ash</u>	Spinner Valve Setting <u> </u>	Driving Method <u> </u>
Test Site <u>Gene Farm</u>	Material Density <u>63</u> lb./cu.ft.	Blade Settings L <u>1</u> R <u>1</u>	Pan Spacing <u>6</u> ft.
Flow Divider <u>8 1/2"</u> Center and <u>Sloped</u> Sides			



QUALITY TENDERS AND SPREADERS

HANDLER EQUIPMENT CO.

Gainesville, Georgia 30503 • (770) 536-8891

Toll Free 800-243-3319 • Fax (770) 535-1265

www.chandlerequipment.net

Spread Pattern Troubleshooting

Problem	Recommended Adjustments
Heavy Directly Behind the Tractor	<ol style="list-style-type: none">1) Move the material divider towards the back of the spreader.2) Decrease spinner speed.3) Check spinner blade condition.
Light Directly Behind the Tractor	<ol style="list-style-type: none">1) Move the material divider towards the front of the spreader.2) Increase spinner speed.3) Check spinner blade condition.
Light Outside the Tractor's Tracks	<ol style="list-style-type: none">1) Check spinner blade condition.2) Decrease spinner speed.
Pattern Off Center	<ol style="list-style-type: none">1) Check to see if gate is level and free of caked material.2) Check to make sure material divider is square and centered.3) Check to make sure spinners are centered and shafts are straight.4) Make sure testing is done parallel to wind.

[illegible]

1) **Control System:** Chandler Spreaders can be equipped with several types of control systems such as Raven, and TeeJet Technologies (Mid-tech)

2) **Spreader Constants - 16" Mesh Chain**

Raven 180 CPR Rate Sensor 16" Chain	
Gate Opening	Spreader Constant
1.5	989
2	742
3	495
4	371
5	297
6	247
7	212
8	185
9	165
10	148

Rawson 67 CPR Gear Tooth Sensor 16" Chain	
Gate Opening	Spreader Constant
1.5	368
2	276
3	184
4	138
5	110
6	92
7	79
8	69
9	61
10	55

DJ 360 CPR Rate Sensor 16" Chain	
Gate Opening	Spreader Constant
1.5	1979
2	1484
3	989
4	742
5	594
6	195
7	424
8	371
9	330
10	397

3) Spreader Constants - 20" Mesh Chain

Raven 180 CPR Rate Sensor 20" Chain	
Gate Opening	Spreader Constant
1.5	791
2	594
3	396
4	297
5	237
6	198
7	170
8	148
9	132
10	119

Rawson 67 CPR Gear Tooth Sensor 20" Chain	
Gate Opening	Spreader Constant
1.5	294
2	221
3	147
4	110
5	88
6	74
7	63
8	55
9	49
10	44

DJ 360 CPR Rate Sensor 24" Chain	
Gate Opening	Spreader Constant
1.5	1583
2	1187
3	791
4	594
5	475
6	396
7	339
8	297
9	264
10	237

4) Spreader Constants - 24" Mesh Chain

Raven 180 CPR Rate Sensor 24" Chain	
Gate Opening	Spreader Constant
1.5	660
2	495
3	330
4	247
5	198
6	165
7	141
8	124
9	110
10	99

Rawson 67 CPR Gear Tooth Sensor 24" Chain	
Gate Opening	Spreader Constant
1.5	245
2	184
3	123
4	92
5	74
6	61
7	53
8	46
9	41
10	37

DJ 360 CPR Rate Sensor 24" Chain	
Gate Opening	Spreader Constant
1.5	1319
2	989
3	660
4	495
5	396
6	330
7	283
8	247
9	220
10	198

Caution

- 1) These are only starter constant numbers and will normally be within 3 – 5 %.
- 2) Chandler Equipment Co. always recommends performing a catch test to verify proper calibration. (See operator's manual for your control system for this procedure).
- 3) When spreading Fertilizer never go below a 2" Gate opening. The 1" Gate opening is recommended for seed and other light materials.
- 4) This spreader is capable of very accurate and precise applications of fertilizer and lime when properly calibrated. Although Chandler Equipment Co. has tested this spreader to offer recommended setting, the **final calibration** and application of different materials is the **RESPONSIBILITY OF THE OPERATOR.**